



# U.S. Coast Guard Sector Southeastern New England

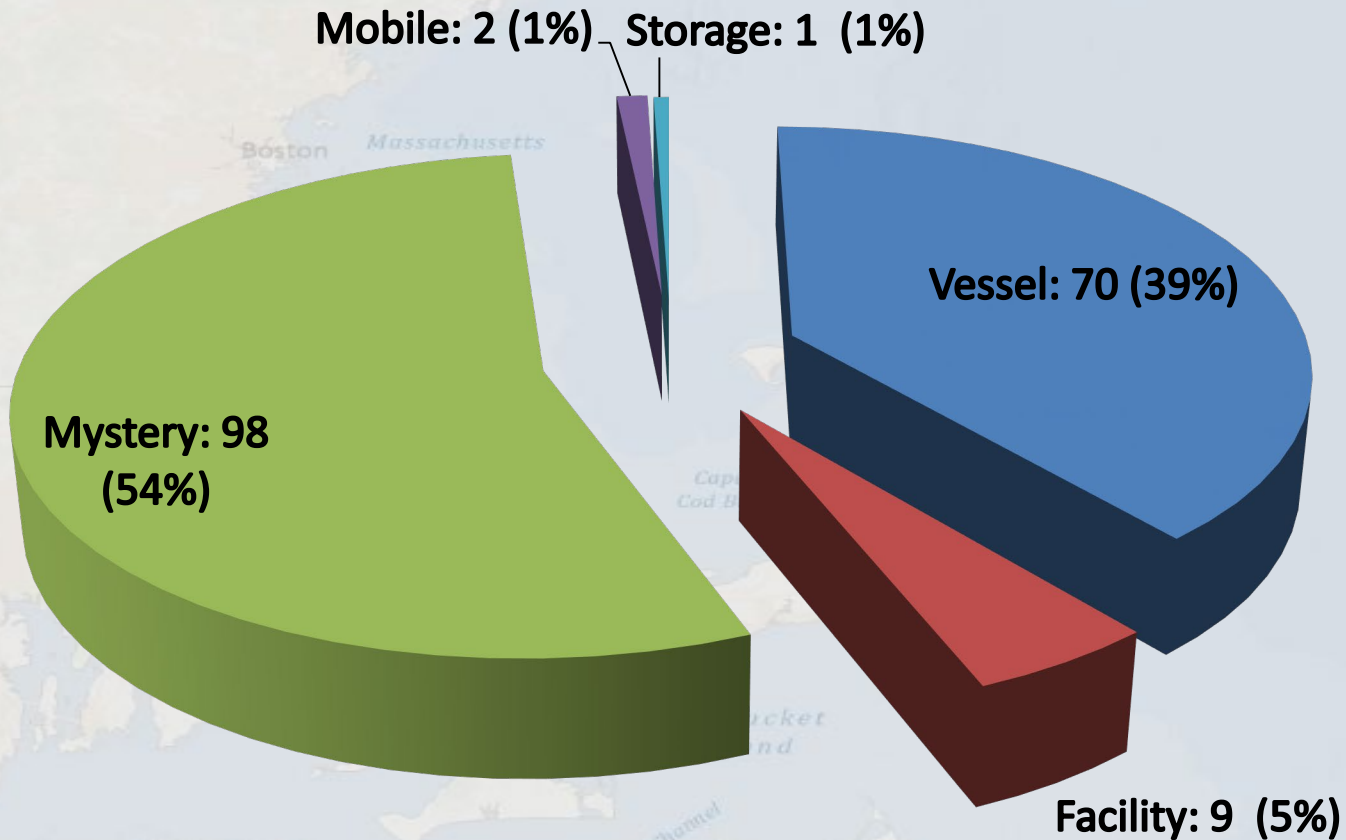






# NRC Notifications in RI & Southeastern MA (May 18 - Oct 18)

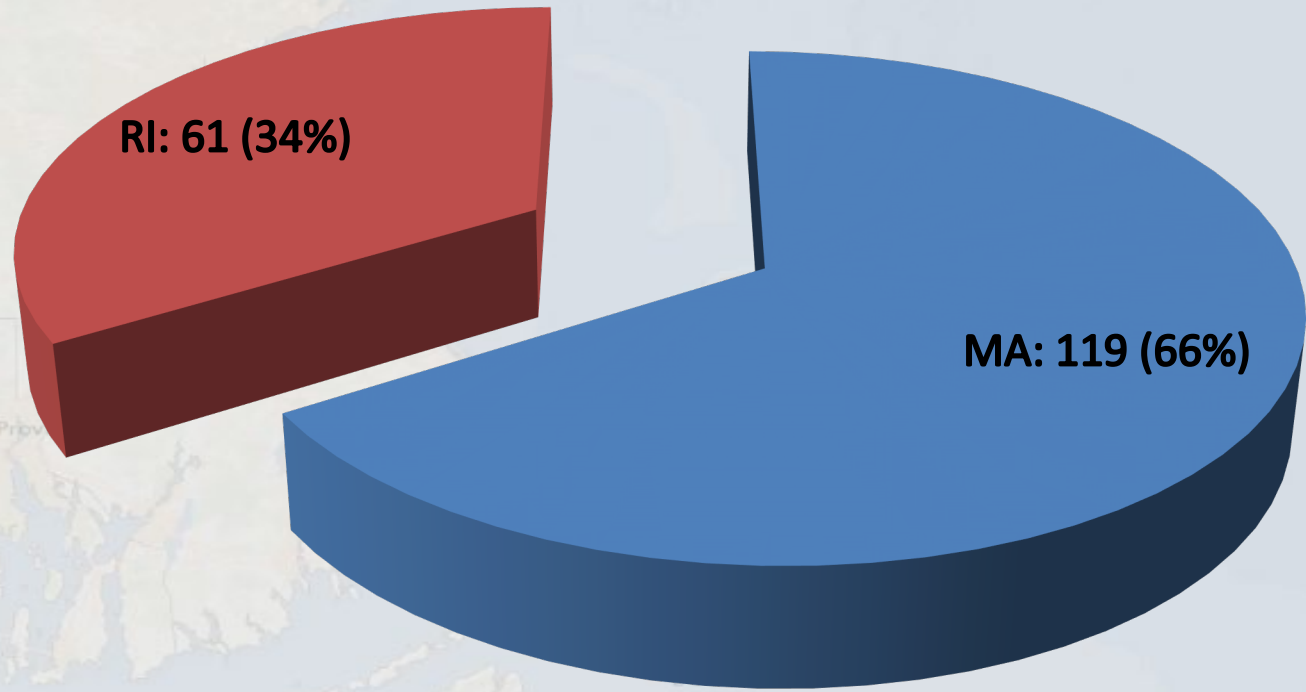
## 180 Reports





# NRC Notifications MA vs. RI

(May 18 - Oct 18)



292

Worcester

RI: 61 (34%)

MA: 119 (66%)

Providence

Rhode Island

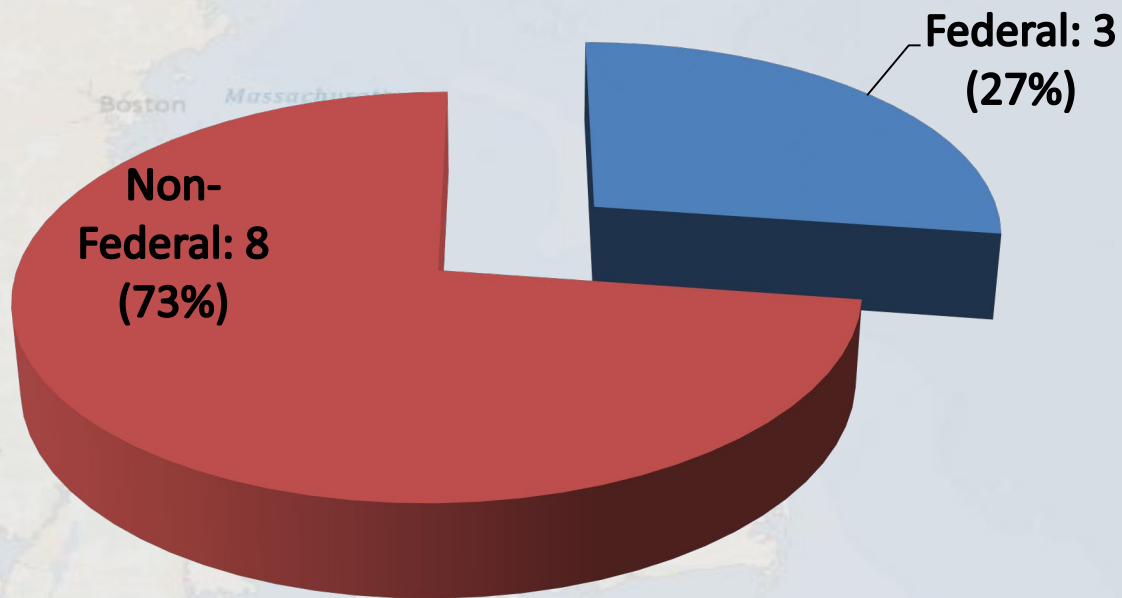
Rhode Island Sound

Muskeget Channel

Nantucket Shoals

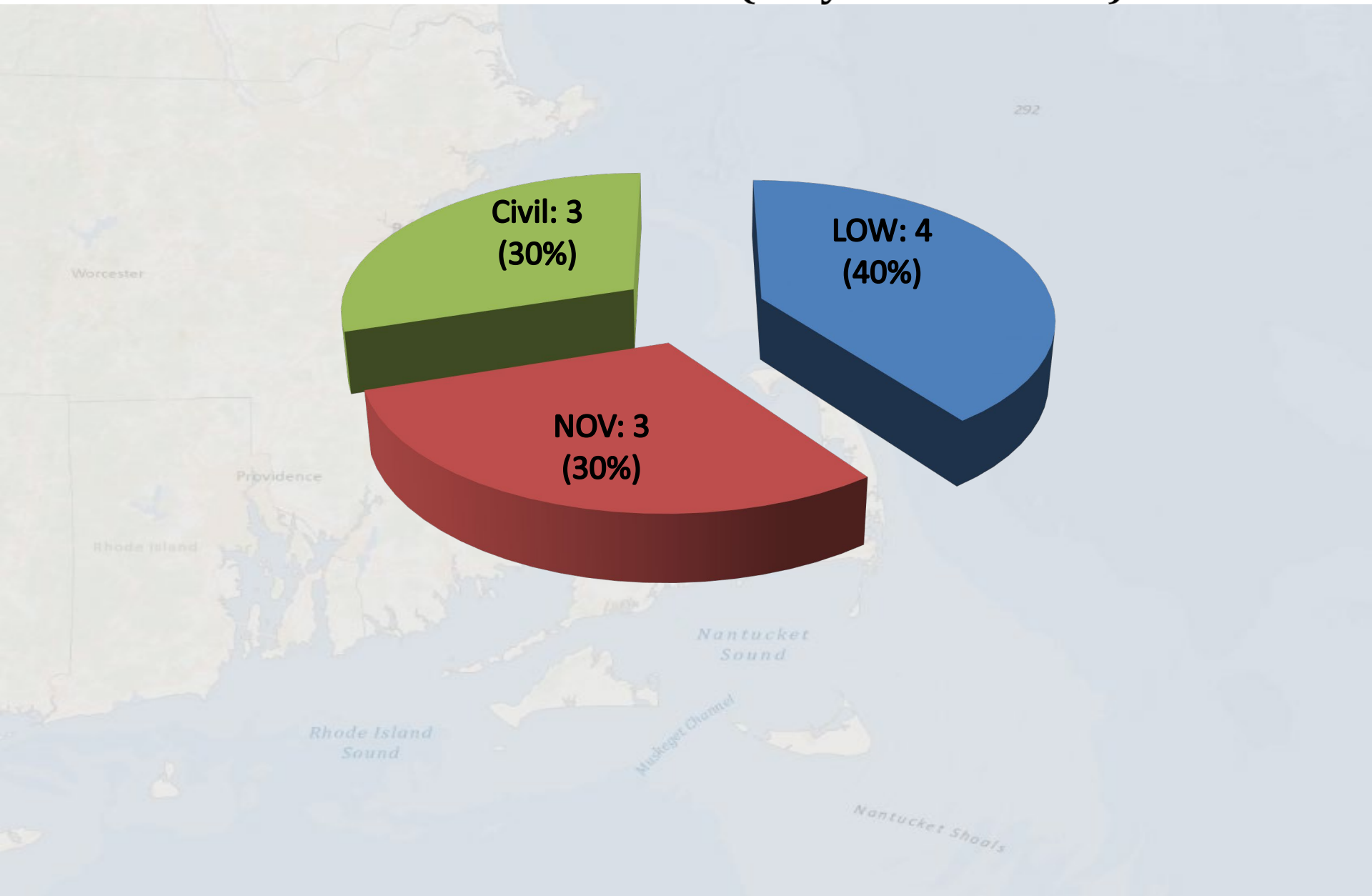
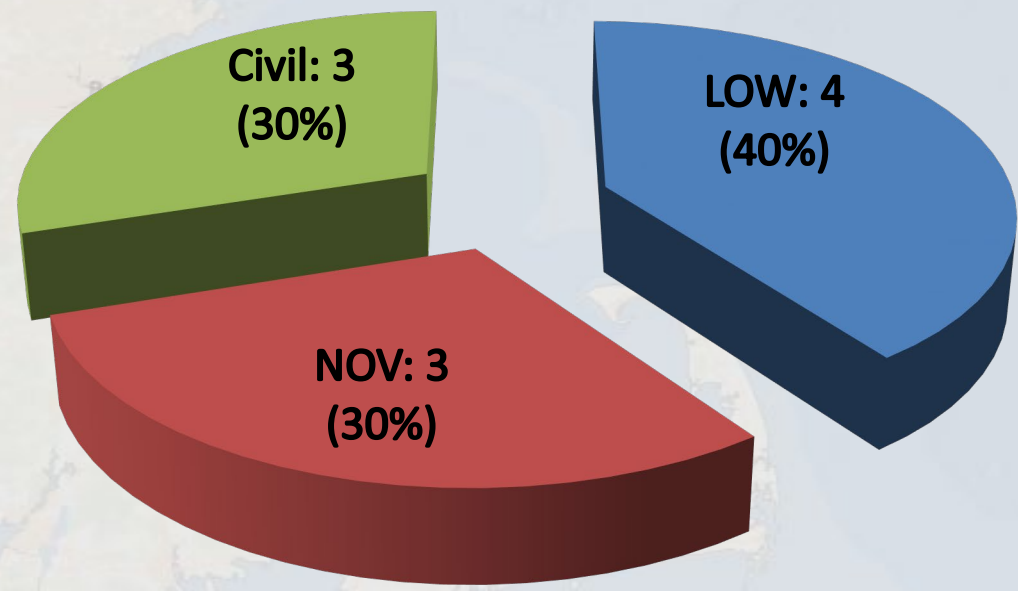


# USCG Responses Including Clean-up Actions (May 18 - Nov 18)





# USCG Enforcement Actions in RI & Southeastern MA (May 18 - Nov 18)





# Sunk Vessel Taunton River



- Oil Spill Liability Trust Fund: \$36,000
- 6 drums of oily solids
- 622 gallons of oily water recovered
- Owner initially started salvage ops; however, after the vessel capsized the cost exceeded the owners financial ability. FOSCR opened OSLTF to remove the threat of pollution.





# Block Island Boat Fire



- 150 gallons of diesel onboard at the time of the fire. <sup>292</sup>
- Vessel burned for 3 hours.
- The depth of water in this location caused some concern with Sta vessel being able to assist with fire suppression.
- There was an unrecoverable sheen in Block Island Sound.



Cape  
Cod Bay

Nant  
Sou

Muskeget Channel





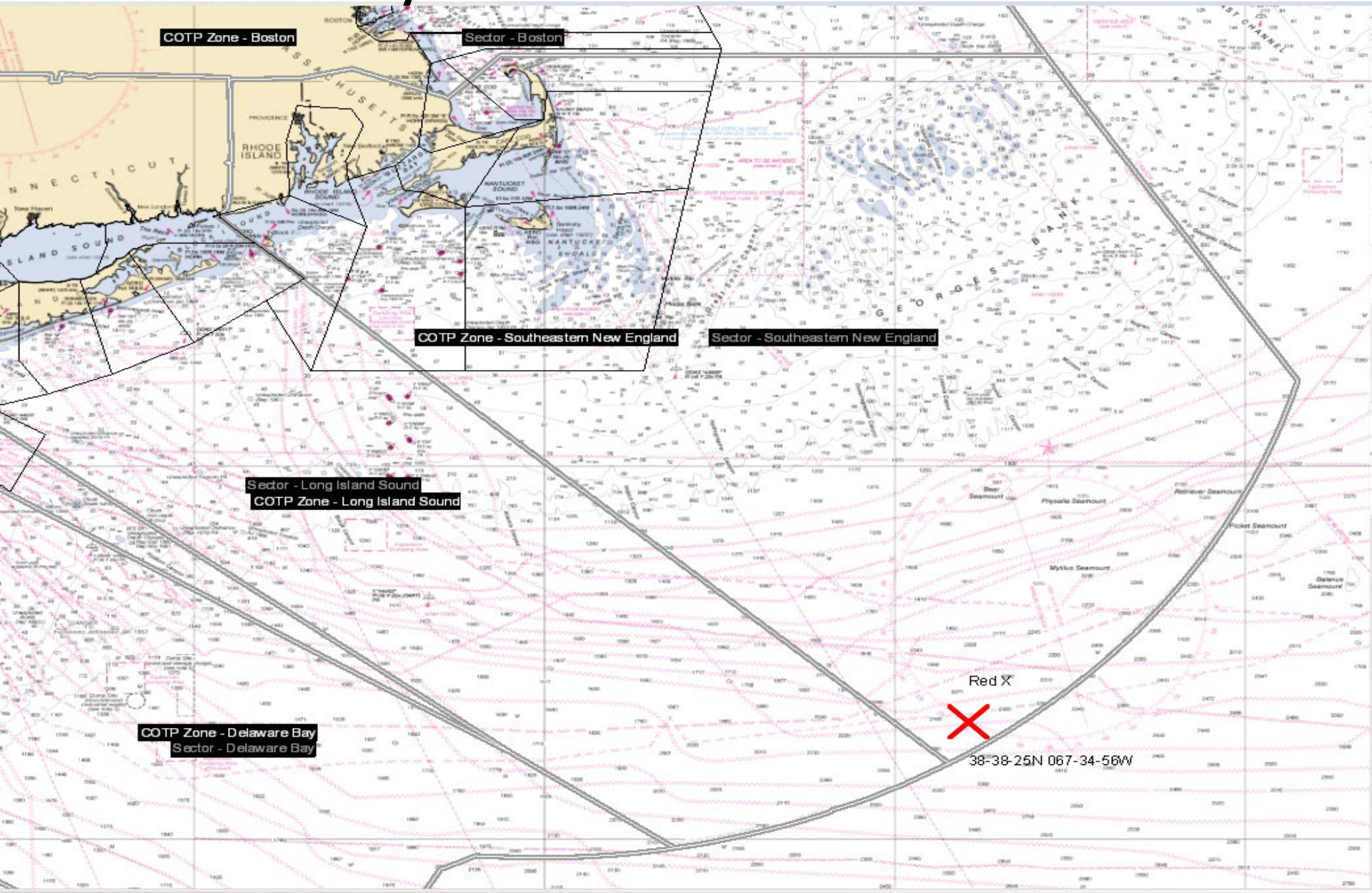
# M/T SONGA FORTUNE



- 12JUN18: NRC received a report of an anomaly detected by a Canadian Satellite
- 190 NM SE of Nantucket
- Approximately 22 NM by 1 NM
- Believed to be oil sheen

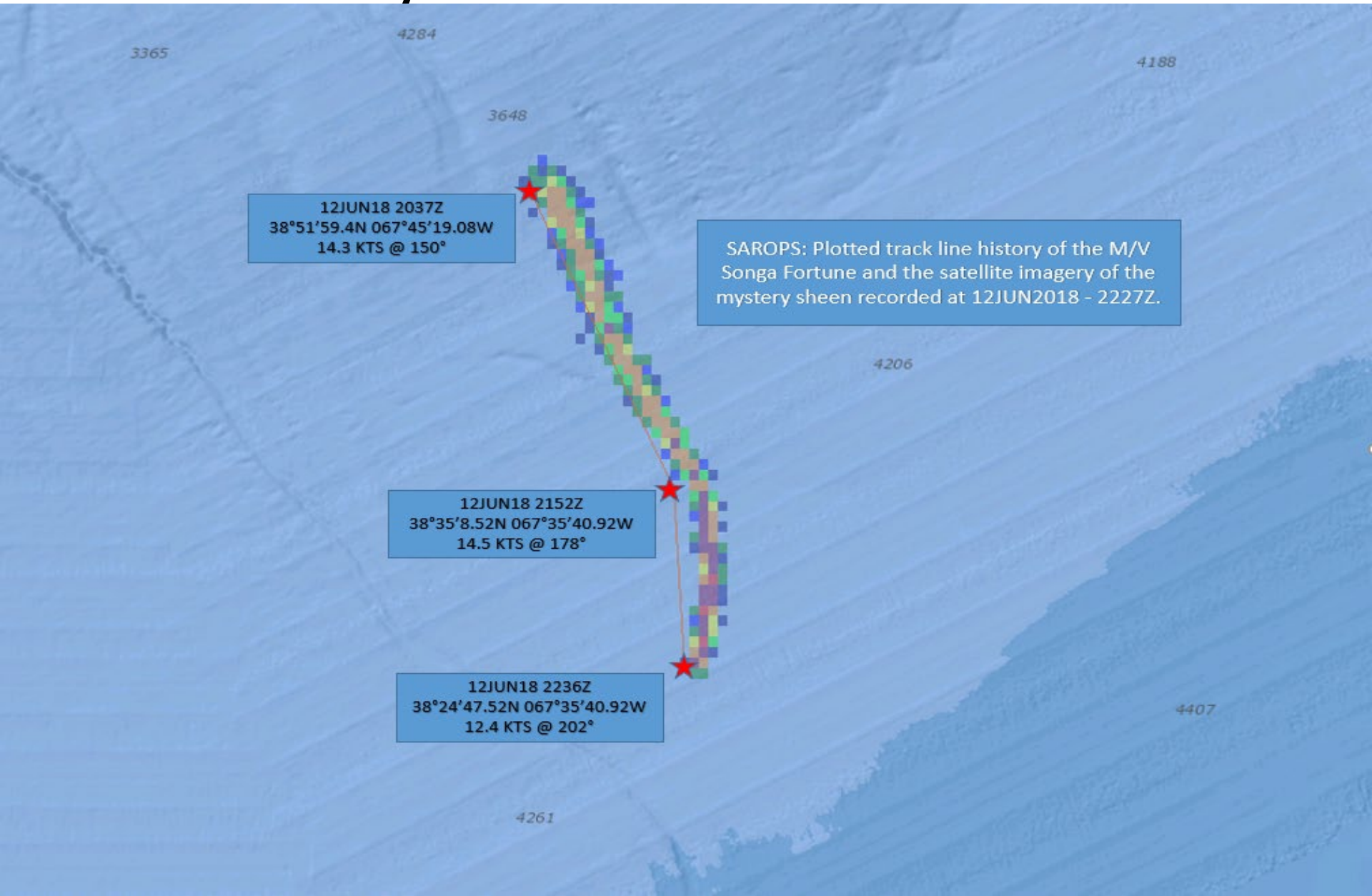


# M/T SONGA FORTUNE





# M/T SONGA FORTUNE





# M/T SONGA FORTUNE



© RIA MAAT  
MarineTraffic.com

- Tracked vessel for two weeks
- Next port of call: Port Arthur, TX
- MSU Port Arthur conducted a MARPOL Annex II inspection
- Discharge was found to be in compliance



# 2018 PREP Exercise Full Scale Exercise – RI– WATCH HILL SPILL

30-31 May, 2018 - 120 People from 20 separate agencies

Day 1: Full Incident Command Post at Westerly Education Center

Day 2: Full scale equipment  
deployment and testing of GRS  
on the Weekapaug Breechway



LTJG Joe Diener  
Joseph.L.Diener@USCG.mil



# Long Term Remedial Action Items

- Beach Closure/Re-opening Decision Matrix
- Cape Cod National Seashore ACP Annex
- Archeological resources added to ACP
- Re-evaluate Southern RI GRSs
- Prepopulated Stakeholder Coordination Plan Templates added to the ACP

LTJG Joe Diener  
Joseph.L.Diener@USCG.mil



292

# QUESTIONS ?

