

8/9/2018

NYSWR

St. Rt. 17

Deposit

Delaware Co, NY

Initial Report @ 2:25 AM:

“engine off tracks, unknown about other cars, no injuries”

“fuel entering stream that runs parallel with tracks”

“3,000 gallons diesel spilled”

Hauling corrosive materials, empty CO2 bottles, and contaminated soil.

Into West Branch of Delaware River

a bit later - 7 cars on the train are carrying radioactive material. No reports of them being derailed.

Update Per NYSDOT Incident Form - Incident Summary/Updates: New York Susquehanna and Western Railroad reports Train: #SU99 (Lead Engine: #3016) was travelling westbound from Little Ferry, New Jersey to Binghamton New York when the rail experienced a wash-out near Evans Road at Mile Marker 171.87 (Gardners Crossing #263-737X) between the Towns of Hancock/Town of Deposit, in Delaware/Broome County Line. Four Engine cars of the 63 car train are derailed and stuck in the mud with one car leaking fuel (Cars # NYSW 3016, 3806, 3800, 3802). There are a total of Twenty-Five Hazmat cars with Placard Class 3 (Residue), Class 2.1 (Residue), Class 8 (Residue) and one loaded (Ethanolamine), Class 2.2 (Residue) and one loaded (Alky Benzene Sulfonic Acid), and Class 9 (loaded NOS - dirt/solid - environmental Hazardous substances). At the time of the report it is unknown if any of the hazardous cars are derailed. No injuries reported, incident is on a single track with no other railroads sharing the track. On-duty Rail Safety Investigator has been notified by telephone.

Heavy rains in the area the night before

RR culvert was washed out

Train derailed as it crossed the culvert

methyl methacrylate tank car – residue

propane tank car – residue

carbon dioxide tank car – residue

construction debris – loaded

Environmentally Hazardous Substances

(radioisotopes) - loaded

Alkylbenzene Sulfonic Acid tank car

Ethanolamine - residue

13 cars of rad contaminated soil destined for US Ecology (rad disposal site.)

...Uranium, Radium, Ra decay products, and potassium 40. No concentrations listed, but the cars are listed as Class 9, so it likely does not meet the DOT definition of rad materials, meaning low concentrations.

...Processed monazite sands for metals content, with Th-232 as the primary radiological contaminant. This is consistent with the isotopes on the manifest. Given that the cars were listed as category 9, and not 7, the waste is very low concentration.

...Just fielded a call from the US Ecology representative. For this consignment, here are the average activity/concentrations of radioactive materials present.

Ra-226 – 4.22 pCi/g

Th-230 – 2.59 pCi/g

U-238 – 2.59 pCi/g

...For those not familiar with what these values mean, they are only slightly above background values for average soils in New York. As often is the case with the remedial actions, there is almost always some commingling of clean overburden soils and other materials as excavations take place. The cleanup values for these isotopes is likely higher than these values.

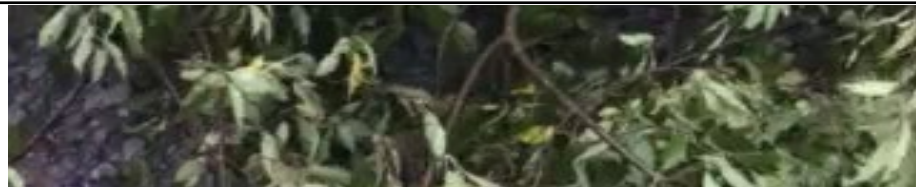
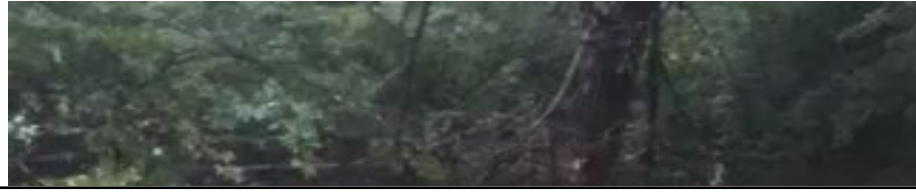
...As I stated prior, the relative risk to the general public, and even workers nearby is very minimal if even calculable for the amount of time anyone will be near the rail cars containing these radioactive materials. And these values definitely indicate they were properly placarded as they definitely do not meet DOT criteria for Class 7 materials.

# Engines and Culvert





Engine video



# Drone View



# Drone View



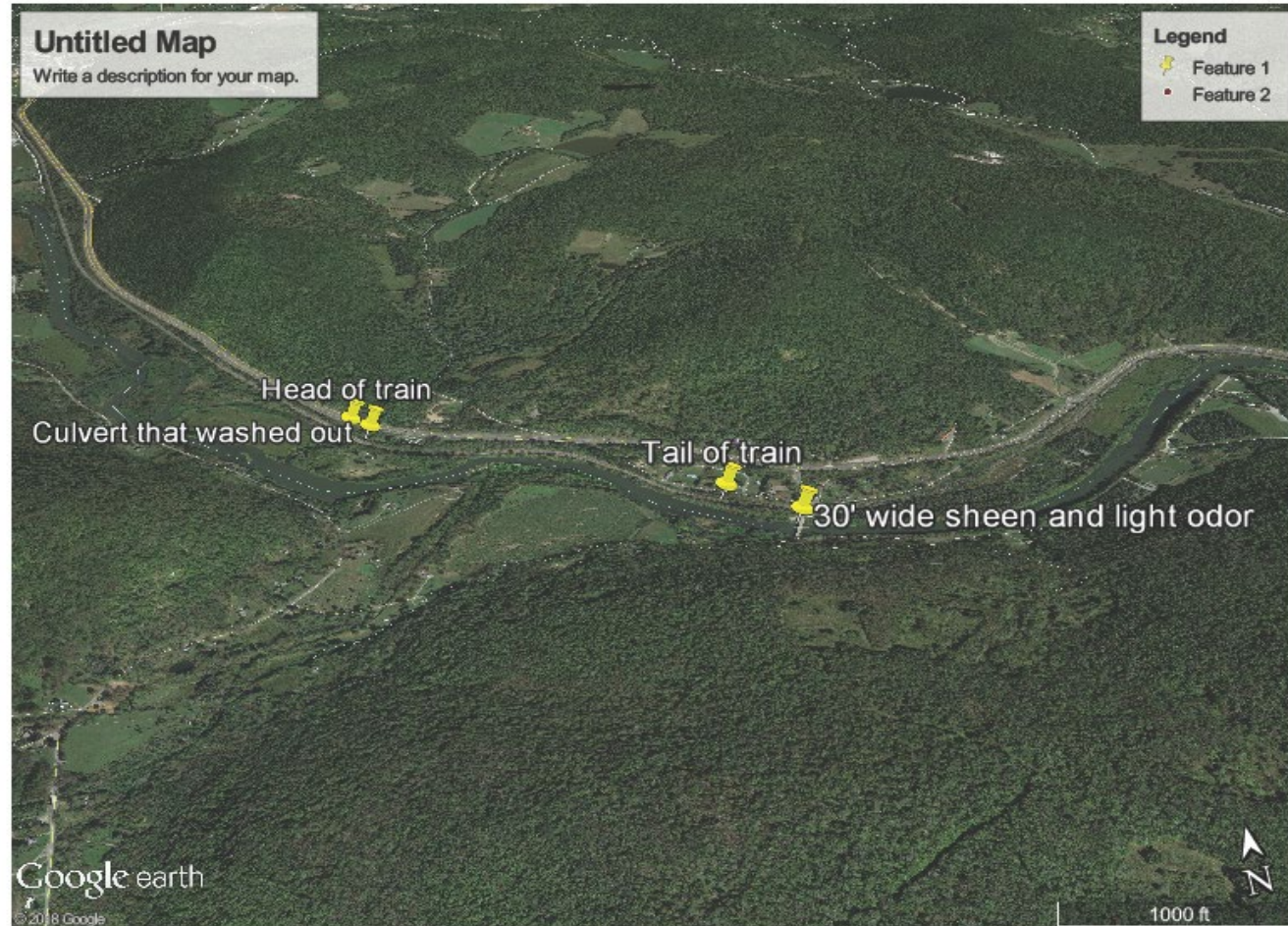
# Drone View



# Google Map – locations that were evacuated



# Google Map – accessible areas and sheen (.75 m)



# Google Map – distance between bridges (8-9 m)



Remediation –

Booms in place

Excavation of contaminated soils

Stream evaluation