

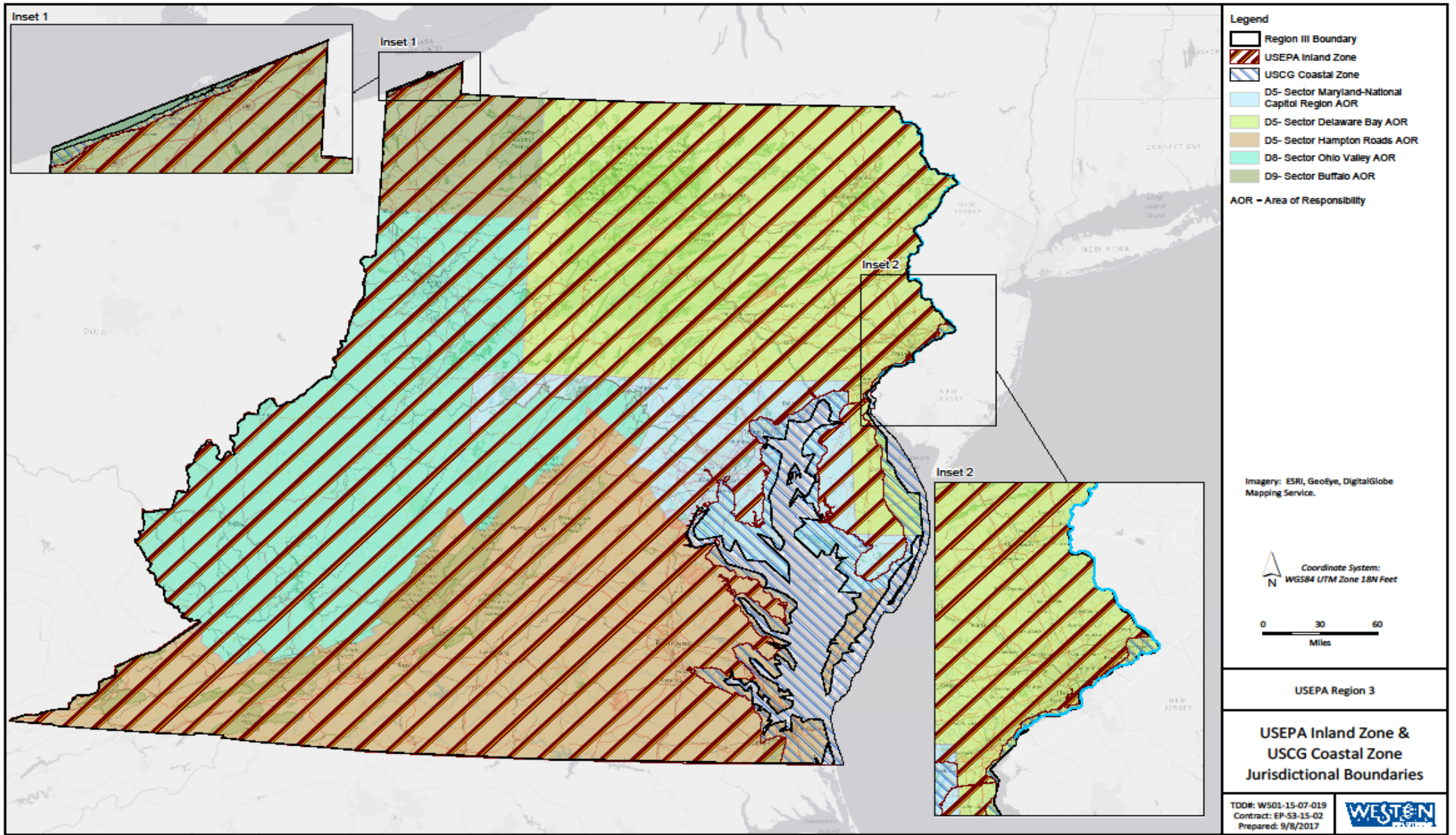
Area Planning

Inland vs Coastal Jurisdiction
Memorandums of Agreement

- Area of Responsibility
- Jurisdictional Boundaries
- Pre-designated FOSC

EPA Region 3 Boundaries

- EPA – Inland Jurisdiction
- USCG – Coastal Jurisdiction
 - District 5
 - Sector Delaware Bay
 - Sector Maryland & National Capital Region
 - Sector Hampton Roads
 - District 8
 - Sector Ohio Valley
 - MSU Pittsburgh
 - MSU Huntington
 - District 9
 - Sector Buffalo

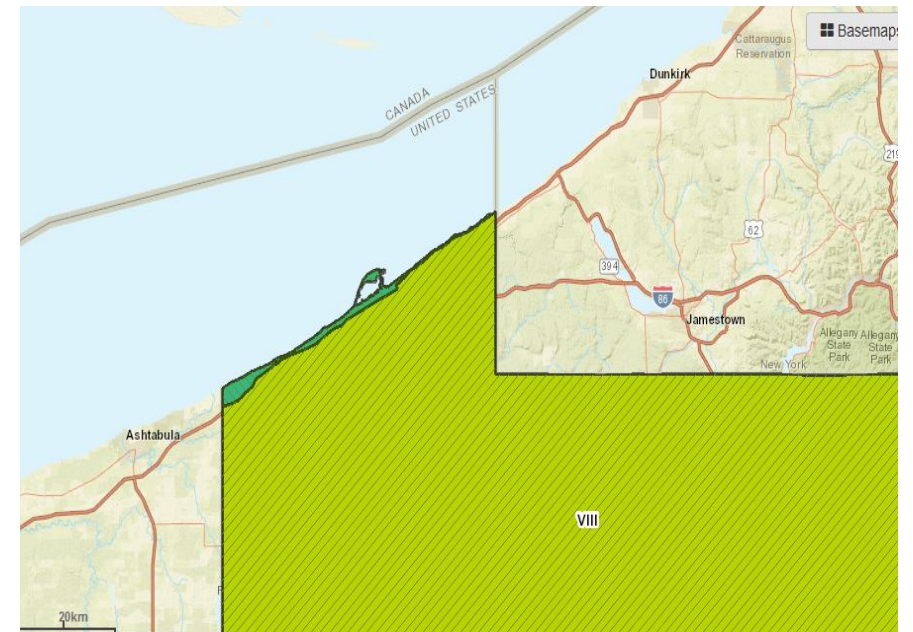


USCG Area of Responsibility (AOR)

- The Sector Commander is responsible for all USCG missions within the Sector's AOR. Unless otherwise specified, the Sector Commander's authorities include:
 - Search and Rescue Mission Coordinator,
 - Federal Maritime Security Coordinator,
 - Federal On-Scene Coordinator,
 - Officer in Charge Marine Inspection (OCMI), and
 - Captain of the Port (COTP).

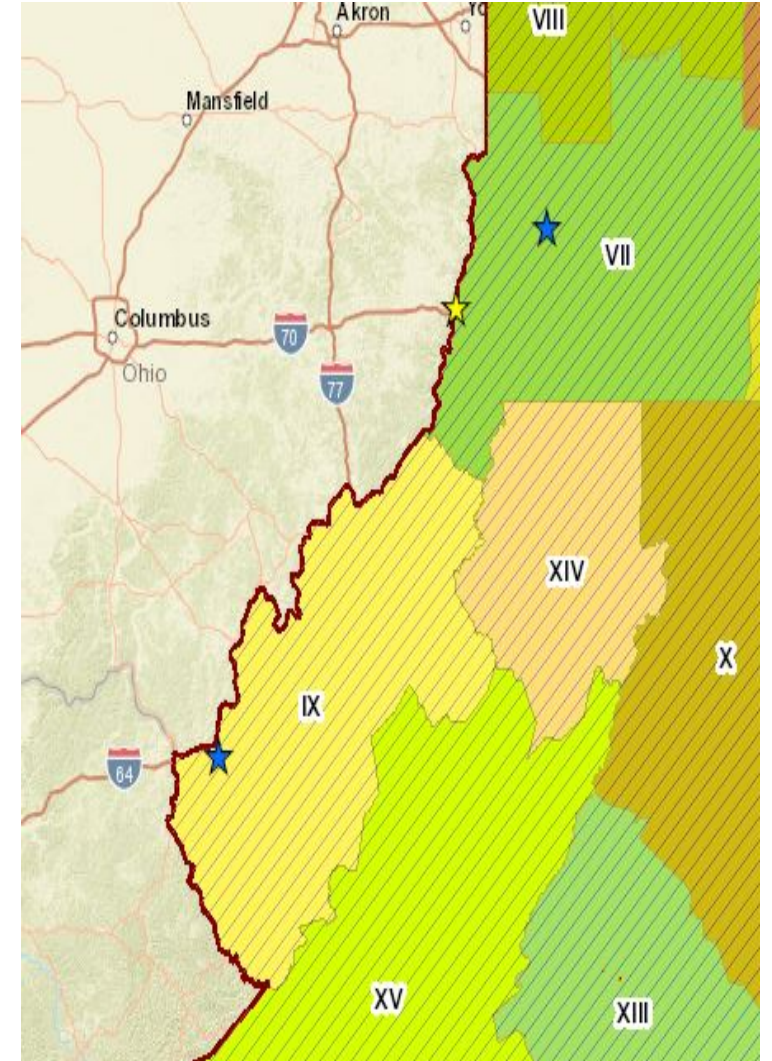
District 9 – Sector Buffalo

- USCG Jurisdiction
- Covers Lake Erie of the Great Lakes
- Small area within Region 3
- No MOA with District 9
 - boundaries per the Federal Register
- OSC Zenone typically coordinated with Sector Buffalo
- Not sure how many NRC Reports for the area. Do not always get reports if USCG jurisdiction



District 8 – Sector Ohio Valley

- EPA Jurisdiction – all inland
- Includes MSU Pittsburgh and MSU Huntington
- Main coverage – Ohio River
 - Allegheny, Monongahela, Kanawha, Big Sandy
 - Region 3 covers the entire Ohio River
 - Region 3 covers to the centerline of the Big Sandy
- MOA with District 8



District 8 – Sector Ohio Valley

- Designates USCG FOSC as lead for 3 types of incidents
 1. Release from a regulated vessel
 2. Release from a marine transfer operation
 3. Release from a USCG regulated facility
- Pre-Designated FOSC for this area
not USCG Jurisdiction or USCG AOR
- EPA responsibility to ensure response is being taken
Should be getting all NRC Reports for the Area

District 8 – Sector Ohio Valley

Examples of Responses:

Mystery Sheen

Regulated Commercial Vessel (barge or tug)

Recreational Vessel

Fixed Facility

Tractor Trailer Accident

Coal Barge

Barge at Lock & Dam

Commercial vessel out of service

District 8 – Sector Ohio Valley

Case Study:

Barge unloading Urea Ammonium Nitrate to a facility on the Ohio side of the Ohio River. Barge breaks in two. Approx. 375,000 gallons remain on the vessel. Releasing an unknown amount of material into river

Who has the lead?

Ohio River – inland jurisdiction – EPA

Urea Ammonium Nitrate – not a hazardous substance

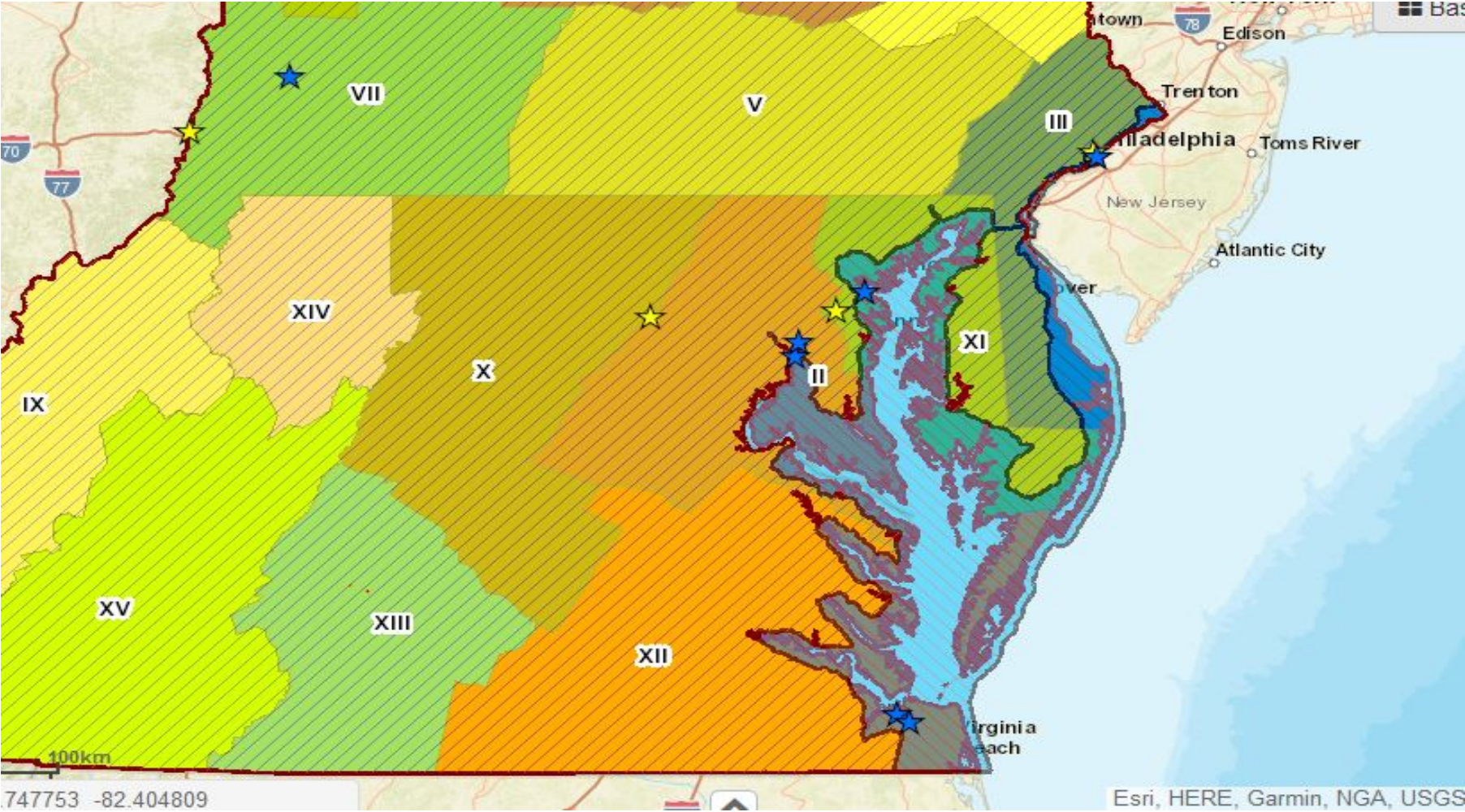
Vessel – not a regulated vessel

Facility – barge was loading to the facility

District 5 – 3 Sectors

- Combination of both Inland and Coastal Jurisdiction
- MOA with District 5 – 2010
- Delineates the geographical boundaries establishing responsibility for the FOSC for pollution responses
- Precise Boundaries are spelled out in the MOA
 - Hard copy maps available – will be loaded on to the Dashboard
 - IACP Viewer boundaries loaded – type in address
- General Rule –location of the source of the discharge in relation to the inland/coastal boundary will determine lead agency

District 5 Boundaries



District 5 – 3 Sectors

- MOA recognizes Primary Missions and Expertise for both the USCG and EPA
- USCG - primary mission over discharges and releases in or threatening navigable waters subject to tide.
- EPA – primary mission for discharges and releases that occur on or threaten land and non-tidal navigable waters.
- USCG will assist the Inland Zone OSC and assume role as FOSC in the Inland Zone when :
 1. Release from a commercial vessel
 2. Release from a commercial vessel transfer operation
 3. Release from a MTR portion of a facility

Results in an actual discharge or threatened discharge of oil or release of hazardous substance into or on the navigable waters of the US

District 5 – 3 Sectors

- EPA will assist the Coastal Zone USCG OSC and assume role as FOSC in the Coastal Zone when:
 1. involves a CERCLA or OPA Facility –and-
 2. Results in an actual or threatened discharge of oil, or a actual or threatened release of a hazardous substance, that occurs on or threatens land and non-tidal, navigable waters.

- Examples:
 - Mystery Sheen Transportation Accident
 - Recreational Vessel
 - EPA FRP Facility

Additional Notes

- Nothing precludes EPA or the USCG showing up at a response and acting as the First Federal Official until the designated FOSC arrives
- Anytime that EPA or the USCG assumes the role of FOSC outside of their jurisdictional area – it should be documented that both agencies discussed and agreed on who will fill the role as FOSC
- If this documented by the EPA Duty Officer – it should be forwarded to the respective Subarea OSC.

The first federal official affiliated with an NRT member agency to arrive at the scene of a discharge or release should coordinate activities under the NCP and is authorized to initiate, in consultation with the OSC, any necessary actions normally carried out by the OSC until the arrival of the predesignated OSC. This official may initiate federal fund-financed actions only as authorized by the OSC or, if the OSC is unavailable, the authorized representative of the lead agency.