

5000 Logistics

5100 Logistics Section Organization

The Logistics Section must be prepared to deliver the necessary support to carry out operations during an incident response. This Section shall provide medical and berthing facilities for personnel, transportation, materials, communications and resources to ensure the incident objectives are being met. In order to cover the myriad of support oriented details that may arise during all types of incident responses, the Logistics Section must maintain cohesiveness and work closely with all sections to ensure incident needs are being identified and addressed. Moreover, the Logistics Section shall make certain that all essential resources are available and accounted for, to enable a successful response.

Six functional units can be established within the Logistics Section. If necessary, a two-branch structure can be used to facilitate span of control. Figure 5-1 is the typical framework of a fully activated Logistics Section. The actual size of the Logistics Section will be based on the needs of the incident.

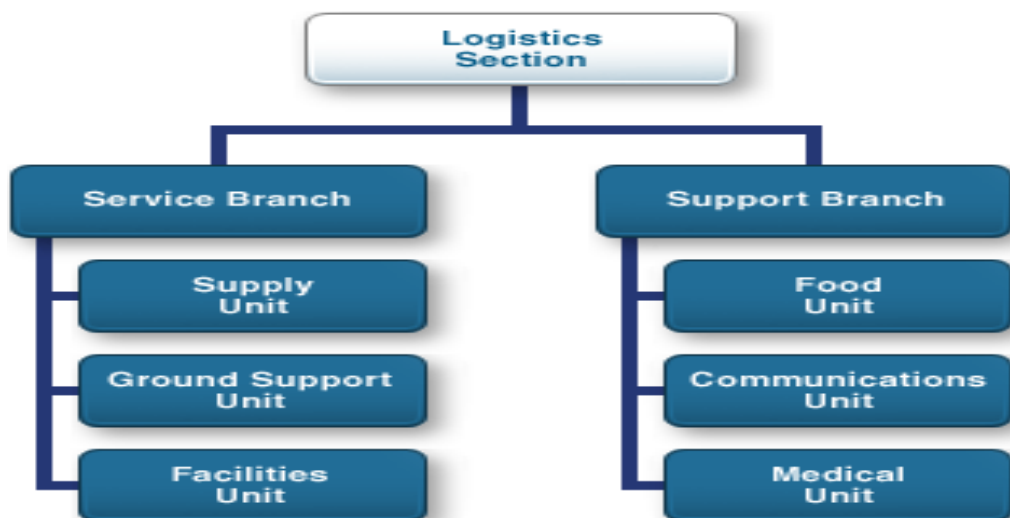


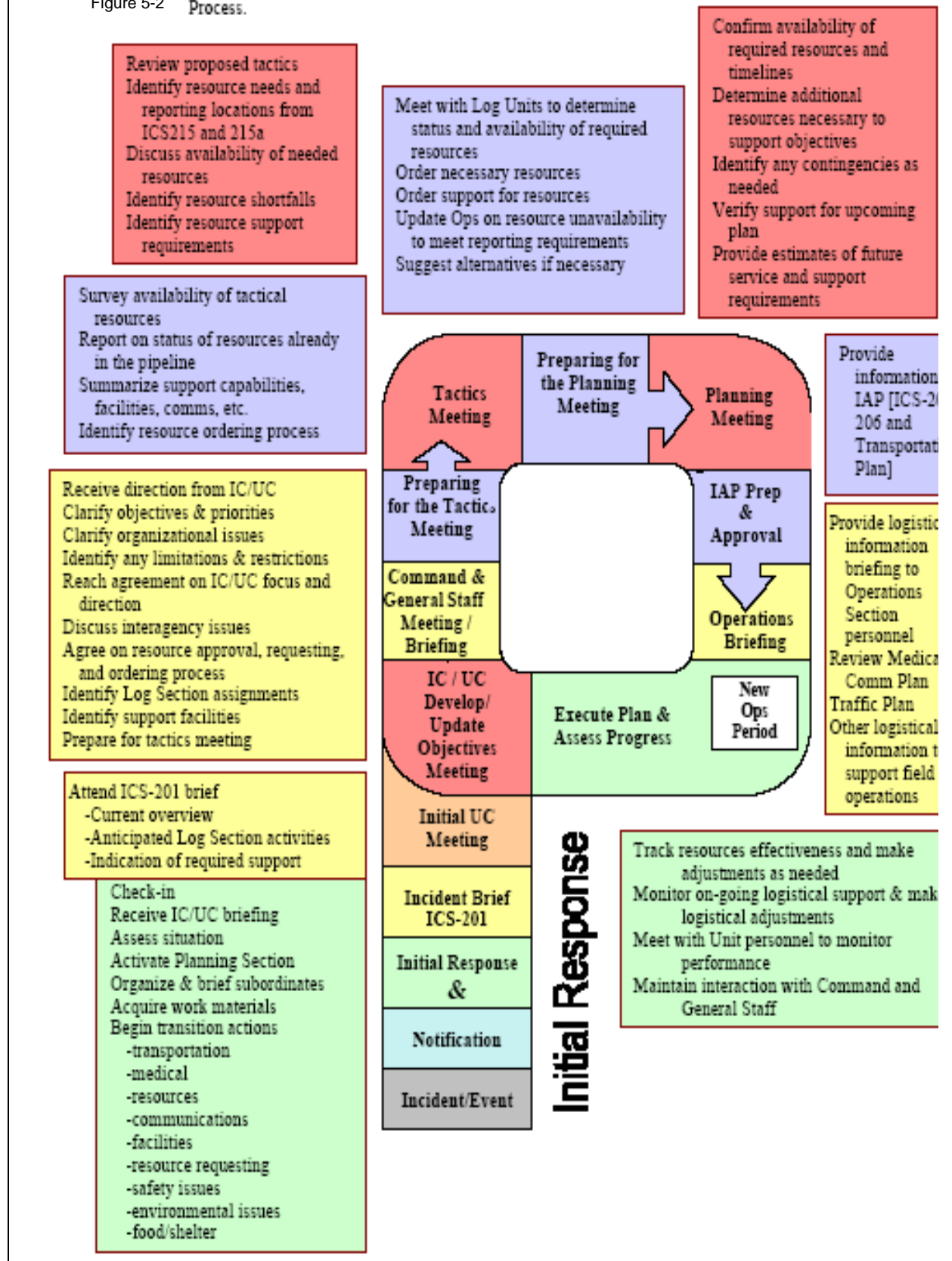
Figure 5-1. The structure of a fully activated Logistics Section.

5110 Roles and Responsibilities

The [IMH \(Chapter 9\)](#) and the [Logistics Section Chief \(LSC\) ICS Job Aid](#) offer further guidance on requirements and expectations of the Logistics Section.

PUERTO RICO & U.S. VIRGIN ISLANDS
 AREA CONTINGENCY PLAN

Figure 5-2 Provides a brief overview of the responsibilities of the Logistics Section in support of the ICS Process.



5200 Support Resources

The Support Branch is responsible for development and implementation of the logistics plan in support of the IAP, including providing personnel, equipment, facilities, and supplies to support incident operations. Below is a list of various support equipment, locations, etc. available in the AOR that may be of use during any of the types of incidents covered in the ACP. The list should not be considered comprehensive. Instead, the [Response Resource Inventory](#) (RRI), compiled by the National Strike Force Coordination Center (NSFCC), should be utilized to identify additional equipment located inside and outside the area covered by this contingency plan.

5210 Summary of Suppliers

This section is not intended to be all inclusive or be considered an endorsement by the Area Committee. Instead, it should be considered as a reliable source of information regarding many of the available resources in the AOR.

5210.1 Oil Spill Removal Organizations and Oil/Hazardous Substance Response Equipment

The Oil Pollution Act of 1990 mandated the creation of a national database of response resources that would be maintained by the Coast Guard NSFCC. This voluntary equipment locator system, known as the [Response Resource Inventory](#), was expanded in 1995 to accommodate the needs of the Oil Spill Removal Organization (OSRO) Classification initiative. The RRI includes data received from companies that wish to have their equipment listed in a publicly accessible system, as well as data generated from the OSRO classification program. Participation by private industry is voluntary except for classified OSROs, whose participation becomes mandatory when they apply for a classification. The RRI can be accessed by OSRO companies that have been granted access to the system. RRI reports may also be requested through USCG Sector San Juan.

The [RRI for the AOR](#) provides a snapshot of all of the classified OSROs and response equipment that is within reach in a reasonably short period of time. It is important to remember that the RRI changes on a daily basis. Therefore, an RRI report should be run through MISLE for the most up-to-date information.

The highlighted OSROs in the [RRI report](#) are those that have a Basic Ordering Agreement (BOA) with the federal government. A BOA is a written agreement between a buyer (i.e. the USCG) and a seller. This agreement states the terms for the procurement of the specified items for a stated period. The BOA is an instrument of understanding, negotiated between an agency, contracting activity, or contracting office and a contractor, that contains terms and clauses applying to future contracts between the parties during its term, a description, as specific as practicable, of supplies or services to be provided, and methods for pricing, issuing, and delivering future orders under the BOA. However, a BOA itself is not a contract.

- **Caribe Hydro blasting Corporation Environmental Div (CHED)**
POC: Jorge Arrufat
787-836-1110
Carretera 385 Km 2.7
Penuelas, PR 00624
[CHED Website](#)
- **Caribbean Enviromarine Services Inc.**
POC: Jose Francisco Rodriguez
San Juan, PR and Penuelas, PR
787- 272-5604
- **Clean Harbors Environmental Services, Inc**
POC: Charlie Vega
(787) 475-9574
(787) 362-6234
(787) 705-7718
San Juan, PR 00936
[Clean Harbors Website](#)
- **National Response Corporation (NRC)**
San Juan, PR 00902
(787) 789-2000
(800) 899-4672
[NRC](#)
- **MSRC**
Bayamon, PR 00961
(787) 641-5369
(800) 645-7745
Fax +1 (787) 641-5370
[MSRC Website](#)

For more information on these contractors and more, visit:
<http://www.cleanupoil.com/PUERTORICO>

5220 Facilities

5220.1 Incident Command Post Options

Puerto Rico has identified several potential command posts and the U.S. Virgin Islands continues to attempt to locate adequate facilities. In both areas the best and most likely location would be local hotels with conference facilities. These are available on all the major islands with the exception of St. John.

Command Posts - Puerto Rico

- Primary - USCG Sector San Juan Building 100 Conference Room
- Alternate – US Navy Operational Support Center, USAG Ft. Buchanan

Additional Locations (do not contain most of the ICP needs / “Go-Kits” needed)

- San Juan Convention Center (owned by the Commonwealth).
 - Naval Station Roosevelt Roads (ownership currently undergoing change)
 - Frontier Pier, San Juan (Owned by PR Port Authority).
 - Ponce Transit Sheds, Port of Ponce (owned by Ponce Port Authority).
 - Mayaguez Ports Authority Building (owned by PR Port Authority).
- Note: This facility is not ideal and the search continues for an adequate facility.

Command Posts - U.S. Virgin Islands

- St. Croix – VITEMA building
- St. Croix – Limetree Bay Terminals facility
- St. Thomas and St. John – local hotels with conference/convention facilities

5220.2 Procedures for Establishment of Command Post

Puerto Rico

Upon request from the FOSC, the Puerto Rico Emergency Management Agency (787) 724-0124) will make arrangements for access to all the command posts identified above that are in Puerto Rico. The exception is the Naval Station Roosevelt Roads command post, which will be accessed through the DOD representative to the Caribbean Regional Response Team at (787) 865-4429.

U.S. Virgin Islands

Upon request from the FOSC, the Virgin Islands Territorial Emergency Management Agency will identify a hotel(s) adequate to facilitate a command post.

- VITEMA St. Thomas (340) 774-2244
- VITEMA St. Croix (340) 773-2244
- VITEMA St. John (340) 776-6444

5220.3 Incident Command Post Needs

This section addresses the supplies for personnel needs and support operations at the command post. Also, ensure “Go-Kits” are equipped with essential equipment as well (i.e., reference books, office supplies, first aid, electronics, etc).

PUERTO RICO & U.S. VIRGIN ISLANDS
AREA CONTINGENCY PLAN

Copy machine suppliers
Office furniture
Refrigerator(s)
Water fountain(s)
Coffee supplies
Sanitation supplies
First Aid Kit
Office supplies (Pens, tape, staplers)
Situation boards
Typewriters
Rest Rooms
Air Conditioning
Fans
Cameras
Emergency lighting
Backup Generators
Maps/Charts
Multiple phone lines
Overhead projector
Slide projector and screen
Public Address System
TV(s) with cable hookup
Copier(s)
Facsimile Machines (Min 2)
Easels/easel paper
Magic markers
Pointers
Printer(s)
Computers/modems
Furniture
Bug spray
Tape recorder(s)
Reference materials such as this ACP, charts, etc.

Communication Equipment Resources/Supplies

(For more info, see [Section 5400](#))

Most of the communication needs may be obtained from commercial sources. Consider checking the yellow pages of your local phone directory, your organizations supply office, or your communications staff.

Telephones
Fax
Portable Telephones/cellular phone

5220.4 Berthing

Lodging

Hotels (some government owned) and military bases are the best resources for lodging. Most of the schools such as colleges and universities are not available since they do not have live-on-campus facilities. In larger spills/responses, a cruise ship may be hired or military vessels used. The warm climate would allow quick construction of temporary shelters. Tent shelters could be brought in quickly by mobile military units, while more permanent temporary shelters could be constructed by civilian contractors, or by military construction battalions. Safety and security must be carefully considered when temporary shelters are used.

Puerto Rico

- Caribe Hilton & Casino, San Juan
- Hyatt Hacienda del Mar, Dorado
- Embassy Suites Resort, Dorado
- Palmas del Mar Resort, Humacao
- Mayaguez Hilton & Casino, Mayaguez
- Holiday Inn, Ponce
- Villas de Soto Mayor Resort Hotel & Country Club, Adjuntas
- Hotel Boquemar, Cabo Rojo
- El Convento Hotel, San Juan
- Days Inn Hotel, Mercedita, Ponce
- Holiday Inn Hotel, Mayaguez
- Sheraton Hotel, San Juan
- Travel Lodge Hotel, Isla Verde
- Copa Marina Beach Resort, PO Box 805, Guanica, PR

U.S. Virgin Islands

- Frenchman's Reef, No. 5 Estate, Bakkeroe St. Thomas USVI 00802
- Hyatt Regency, St. John
- Stoffer Grand Beach Resort, St. Thomas
- Bluebeard Castle Hotel, St. Thomas
- Magens Pt. Resort, St. Thomas
- Ramada Yacht Haven Hotel, St. Thomas
- Windward Passage Hotel, St. Thomas
- Anchor Inn Hotel, St. Croix
- Caravelle Hotel, St. Croix
- Buccaneer Hotel, St. Croix
- Carambola Beach Resort, St. Croix
- Chenay Bay Beach Resort, St. Croix

- Club Comanche, St. Croix
- Cormorant Beach Club, St. Croix
- Danish Manor Hotel, St. Croix
- Hibiscus Beach Hotel, St. Croix
- Hotel on the Cay, St. Croix
- King Christian Hotel, St. Croix
- St. Croix by the Sea Hotel, St. Croix

Military support should be coordinated through the DOD representative to the CRRT.

5220.5 Port/Dock Facilities and Capacities

See [Sections 5220.8; 5220.9](#)

5220.6 Staging Areas

Los Tubos

Manati, Puerto Rico

Staging Area / Boat Ramp / Potential Helibase

[Map Location](#)

FURA Maritime

Vega Baja, Puerto Rico

Staging Area / Boat Ramp

[Map Location](#)

Caja De Muertos

Isla Caja de Muertos, PR

[Map Location](#)

Balneario de Guanica Cana Gorda Beach Park

PR National Parks

Luis Ortiz – First Manager

Facility Telephone Number: 787-821-5676

Personal Cell for emergencies: 787-299-0350

Guanica, PR

[Map Location](#)

La Parguera Baseball Field

Calle 6 # 153 | La Parguera,

Lajas, Puerto Rico 00667

[Map Location](#)

Mayaguez Shooting Club

Mayaguez, PR

[Map Location](#)

Playa Sandinera

Guanica, PR

[Map Location](#)

Puerto Real Police Division Building

Cabo Rojo, PR

[Map Location](#)

Rio Ponce

Supervisor

U.S. Coast Guard RIO Ponce

41 Calle Bonaire

Ponce, PR 00716

787-284-4823

787-502-7148

[Map Location](#)

Roosevelt Roads Staging

Ceiba, PR

[Map Location](#)

Air station Borinquen, U.S. Coast Guard

Aguadilla, PR

[Map Location](#)

Frontier Pier, P.R. Ports Authority

San Juan, PR

[Map Location](#)

Isla Grande, Hanger 21, U.S. Marines/National Guard

San Juan, PR

[Map Location](#)

Pan Am Dock & Isla Grande Area, P.R. Ports Authority

San Juan, PR

[Map Location](#)

VI National Guard Base, VITEMA/VING - St. Thomas

St. Thomas, US VI

[Map Location](#)

Limetree Bay Terminals - St. Croix

St. Croix, US VI

[Map Location](#)

5220.7 Security Providers

The Security Manager is responsible to:

- Provide safeguards needed to protect personnel and property from loss or damage.
- Establish contacts with local law enforcement agencies as required.
- Contact agency representatives to discuss any special custodial requirements that may affect operations.
- Request required personnel support to accomplish work assignments.
- Ensure that support personnel are qualified to manage security problems.
- Develop security plan for incident facilities.
- Adjust security plan for personnel and equipment changes and releases.
- Coordinate security activities with appropriate incident personnel.
- Keep the peace, prevent assaults, and settle disputes through coordination with Agency Representatives.
- Prevent theft of all government and personal property.
- Document all complaints and suspicious occurrences.
- Maintain Unit/Activity Log (Form ICS-214).

If the command post location is determined by the RP, then that party will take the lead for security responsibilities at the incident.

Police Departments - Puerto Rico

Cuartel del Policia Ave. Victoria Aguadilla , PR 00603	Cuartel de la Policia Ave Hostos, Centro Gubernamental Arecibo , PR 00612
Dept. Policia de Boqueron Carr #101, Km. 3.1 Bo. Boqueron, Cabo Rojo , PR 00622	Calle Jose de Diego Cabo Rojo , PR 00623
Cuartel Policia de Cagual Interseccion Road 189 Ave. Rafael Cordero Caguas , PR 00725	Cuartel Policia de Culebra Correo General Barrio Fullatosa Culebra , PR 00775
Ave. Lauora Pinero Numero 59 Ceiba , PR 00735	Cuartel Policia de Fajardo Calle Victoria Fajardo , PR 00738
Cuartel Policia de Guanica Calle 13 de Marzo Guanica , PR 00653	Cuartel Policia de Guayama C/principal Urb. La Hacienda Nuevo Parque de Pelota Guayama , PR 00784
Cuartel de Policia Box 404 Nuevo Parque de Pelota Guayanilla , PR 00656	Cuartel de Policia Calle Font Martelo Humacao , PR 00971

PUERTO RICO & U.S. VIRGIN ISLANDS
AREA CONTINGENCY PLAN

Cuartel de Policia Calle Juan Hernandez Ortiz Isabela , PR 00662	Cuartel de Policia Carr. 187 de Loiza Loiza , PR 00(787)
Cuartel de Policia Carretera 68, Section 2 Manati , PR 00641	Cuartel de Policia Cental Governamental de Mayaguez Mayaguez , PR 00680
Cuartel de Policia Commandancia de la Ponce Ave. Hostos Ponce , PR 00731	Cuartel General de Policia PO Box 70166 San Juan , PR 00936-8166
Cuartel de Policia Calle Luis Munoz Rivera Toa Baja , PR 00699	Cuartel de Policia Carretera PR200 Vieques , PR
Cuartel de Policia Calle Catalina Morales Final Con el Apartado 428 Yabucoa , PR 00767	Cuartel de Policia Calle Arana #4 Lares , PR 00669

Police Departments - U.S. Virgin Islands

Police Department Nisky Shopping Center Second Floor St. Thomas , USVI 00802	Police Department Leender Jurgun Command Cruz Bay, St. John , USVI 00830
Patrick Swanee Headquarters R. 02 Kingshill, St. Croix , USVI 00850	

5220.8 Airports and Helispots

Aircraft Landing Sites

Adjuntas 18-11N 066-45W 1600, Asphalt Private, landing fee	Alexander Hamilton Christiansted, St. Croix 17-42N 064-48W 7612, Asphalt 100, Jet A1	Andgada 18-44N 064-20W 2500, Paved
Arecibo 18-27N 066-41W 3975, Asphalt 100LL Attn Days	Beef Island 18-27N 064-33W 3600, Asphalt Closed nights, except by PPR	Boqueron 18-12N 066-50 W 1200, Asphalt Private

PUERTO RICO & U.S. VIRGIN ISLANDS
AREA CONTINGENCY PLAN

Charlotte Amalie St. Croix 18-20N 064-56W 10,000, St. Thomas Harbor Private	Christiansted Harbor St. Croix 17-45N 064-42W 7000, Christiansted Harbor 100, Jet A Private	Combate 17-58N 067-12W 3000, Dirt Private
Cruz Bay 18-20N 064-48W 2000, Pillsbury Sound Private	Culebra 18-19N 064-58W 7612, Asphalt 100, Jet A Attend days, Landing fee 7500 lbs & over	Cyril E. King St. Thomas 18-20N 064-58W 5348, Asphalt 100LL, Jet A Attnd days,
Diego Jimenez Torres Fajardo 18-18N 065-40W 3600, Asphalt 100 Attnd days, landing fee 7500 lbs & over	Dorado 18-28N 066-18W 3420, Asphalt 100 Private	Fernando Luis Ribas Dominicci...San Juan 18-27N 066-06W 5317, Asphalt Attnd days, landing fee 7500 lbs & over
Humacao 18-08N 065-48W 2458, Asphalt Attnd days, landing fee 7500 lbs & over	Labadie 18-27N 067-04W 1800, Turf Private	Luis Munoz Marlin Intl Isla Verde 18-26N 066-00W 10,002, Asphalt, Concrete 100, 115, Jet A1+ Attnd landing fee
Mayaguez 18-15N 067-09W 4999, Asphalt 100LL Attnd , landing fee, 7500 lbs or less	Ponce 18-01N 066-34W 6904, Asphalt, Concrete 100, Jet A-1 Attnd, landing fees, over 7500 lbs	Patillas 17-59N 066-01W 2000, Asphalt Attnd days, landing fee, over 7500 lbs
Rafael Hernandez Aguadilla 18-30N 067-38W 11,700, Asphalt, Concrete 100, Jet A-1 Attnd days, landing fee over 7500 lbs	Naval Station Roosevelt Roads 18-15N 065-38W 11,000, Concrete 100LL Private, attend days	Vieques 18-08N 065-30W 2500, Asphalt 100LL Attnd days, landing fee over 7500 lbs
Virgin Gorda 18-27N 064-26W 3100, Coral	<i>This space left blank</i>	<i>This space left blank</i>

Aircraft Resources

Puerto Rico

- FC Charter
- Beech craft - Flight, Inc.
- Caribe Aviation

- Executive Airlines Inc.
- Hill Helicopters
- Renal Services
- Ponce Air Charter
- Air National Guard
- Army National Guard
- Civil Air Patrol

U.S. Virgin Islands

- Bolkhe International Airways
- VI Ground Handlers

See also SILC website for any other resources already under contract: [SILC BOA List Website](#)

5220.9 Temporary Storage and Disposal Facilities

Storage/Disposal Facilities are limited in Puerto Rico and the Virgin Islands. Only Regulated Facilities are capable of receiving hazardous waste.

5220.91 Transport of Waste

Transport of Hazardous Waste

Waste classified as hazardous under either federal or Commonwealth/Territory regulations must be transported to a permitted or interim status hazardous waste facility. Hauling of the waste must be done by a licensed hazardous materials hauler. The licensed hauler must have a U.S. EPA I.D. number and State transporter I.D. number. Prior to removal of the hazardous material from temporary storage, a uniform hazardous waste manifest (form DHS-8022A) must be prepared by the generator (RP or his representative) for recovered petroleum and other contaminated materials. If assistance is required for manifesting, the RP may request it from the on-scene UC representatives. All hazardous materials shipped off-site must be transported in compliance with applicable regulations. These include the RCRA regulations in 40 CFR 262-263, DOT Hazardous Materials Regulations (49 CFR 171-178), and any applicable Commonwealth/Territory regulations.

Transport of Non-Hazardous Waste

Waste determined to be non-hazardous will be transported to a Class II waste management facility. Manifesting of the waste is not required but a Bill of Lading is required for transportation. The appropriate EQB/DPNR and local health department should be contacted to determine what waste management facility will accept the waste and any additional test requirements the facility might require. Removal from temporary storage will require authorization of the on-scene coordinator.

5220.92 Disposal Alternatives

Puerto Rico

Disposal alternatives in PR vary depending upon the nature and classification of the waste. These are:

- Land filling - Land filling of non-hazardous liquid waste and waste with free liquids is permitted after solidification with kiln dust, caliches or similar materials and proper containerization. Most companies that handle this type of waste in PR dispose of it only in EQB-endorsed or EQB-approved landfills. No hazardous waste can be land filled in PR because there is no approved secure landfill for such purpose.
- Incineration - Incineration of combustible and burnable waste in commercial incinerators is performed in PR as long as the waste is not hazardous and does not contain PCBs. At present, there are two commercial incinerator facilities (in Canovanas and Caguas) that burn non-hazardous combustible waste. In addition, there are various other chemical and pharmaceutical manufacturing facilities that have EPA/EQB-approved noncommercial incinerators to destroy hazardous and non-hazardous waste generated during the manufacturing process. In the case of a catastrophic or major spill of organic material, a portable incinerator or volatilizer can be brought on-site to destroy the oil and oil-contaminated waste. The incinerator/volatilizer would be set up close to the spill site. This would reduce any problem that could arise from the transportation of such waste to any disposal site elsewhere. Another alternative would be for the responsible party or the government to negotiate agreements or Memoranda of Understanding with non-commercial incinerators to allow for the destruction of spill-generated waste.
- Substitute Fuel - There is a commercial facility in Manati that manufactures a synthetic fuel by blending waste oil (hazardous or non-hazardous) with various types of solvents. This fuel is manufactured to strict specifications and fed into a cement kiln in Dorado.
- Recycling/Reuse - Petrochemical and chemical manufacturing companies located in PR may accept product recovered from a spill incident but it has to meet strict requirements. Most companies, however, treat and/or reuse product recovered from spill incidents that occurred within their facilities.

Virgin Islands

In addition to listed and characteristic hazardous wastes, the USVI defines oil and petroleum products as hazardous materials. There is no approved municipal or commercial landfill facility to dispose of hazardous wastes, oil and oil-contaminated materials. In addition, there are no approved incinerators or substitute fuel manufacturing facilities. Therefore, most hazardous waste and waste oil in the USVI has to be shipped out of the territory for disposal.

Some potentially responsible parties of spill incidents in the USVI, however, have disposal alternatives other than shipping the spill waste out of the territory. For example, the Limetree Bay Terminals facility on the island of St. Croix has a land treatment system (land farming) and a wastewater plant with an oil separator in its facility.

The alternative of using portable incinerators was implemented in the USVI to deal with a catastrophic or major oil spill. Approximately 600,000 gals of No. 6 oil spilled from a WAPA storage tank in Christiansted, St. Croix, because of damages caused by Hurricane Hugo in September 1989. A portable incinerator was brought to St. Croix in July 1990 to destroy the oil residues remaining in the beach sand as part of the FEMA response to the damages caused by the hurricane.

The USVI government plans to install three incinerators (one in each of the three main islands of the territory) to destroy biomedical waste. These incinerators may also be used to destroy waste generated by a spill incident.

Another alternative would be for the government to negotiate interagency agreements or Memorandum of Understanding with noncommercial disposal facilities for the disposal and/or destruction of spill-generated waste.

5220.93 Treatment, Storage, and Disposal Facilities

The treatment, storage, and disposal (TSD) companies presented below have provided information regarding the disposal of spilled and spill-contaminated materials. These companies are presented in alphabetical order and their inclusion in this list does not necessarily represent endorsement by the EPA or USCG.

BFI of Puerto Rico, Inc.

Ave. Baramaya Final, La Cotorra Ward

P.O. Box 7104

Ponce, P.R. 00732

(787) 986-7777 EMERGENCY

(787) 841 7775 (24hrs)

(787) 841-7770, 788-7171

(787) 841 -1078 FAX

Contact person: Mr. Juan Rodriguez – General Manager, Mr. Jose Torres – Waste Manager

Disposal method: Land filling of non-hazardous municipal and industrial waste and asbestos materials. BFI operates three disposal cells owned by the Municipality of Ponce and operated by BFI under a lease agreement. Separate Cells are available for municipal, industrial and asbestos wastes respectively.

Type of waste accepted: BFI will collect, transport and landfill all solid, semi-solid and liquid municipal and industrial non-hazardous waste streams and asbestos containing materials.

The client provides a sample of the waste for RCRA characteristics analysis in the BFI laboratory. If waste is hazardous, BFI will not accept it or coordinate disposal. Liquid non-hazardous waste is land filled after solidification with kiln dust. The facility has a solidification pit. The waste is disposed in drums or in bulk in the industrial cell.

There is a capacity of 145,000 cu. yd. in the industrial cell.

Temporary storage area: BFI will store in its facility only the amount of waste that can be processed in a day. BFI usually does not provide temporary storage on or off site but in emergency situations it has the capacity for four trailers.

Training: BFI personnel have the 24 hr training as per RCRA regulations and additional in-house training.

Commercial Incineration Corporation

Canovanillas Industrial Park

P.O. Box 9086, Plaza Carolina Station Carolina, P.R. 00988-9086

(787) 257-7370 (not available 24 hrs)

(787) 257-7235 FAX

Contact person: Orlando Mercado/Carlos Rodriguez

Disposal method: incineration

Type of waste accepted: Commercial Incineration Corp. (CIC) will collect, transport and incinerate only solid non-hazardous burnable waste streams. The client must provide a certification specifying that the waste is non-hazardous and that it does not contain PCBs. If the waste is hazardous, CIC will not accept it or coordinate disposal.

Capacity: 3000 lbs/hr

Temporary storage area: An area of 5 cuerdas (a cuerda is 0.97 acre) is available for temporary storage.

Training: CIC personnel are trained in the facility operations but this training is not as per the OSHA HAZWOPER regulations.

Celsius, Inc.

Placido Gonzalez Industrial Park

P, O. Box 6616

Caguas, P.R. 00726

(787) 743-2731, 385-3797

Contact person: Angel Perez

Disposal method: incineration

Type of waste accepted: Celsius will collect, transport and incinerate those burnable liquid and solid waste streams that are determined to be non-hazardous. The client must submit certification specifying that the waste is non-hazardous and that it does not contain PCBs. If waste is hazardous, Celsius will not accept it or coordinate disposal.

Capacity: 1700 lbs/hr (permitted for 16 hrs/day)

Temporary storage area: 4000 cu. ft.

Training: Celsius personnel are trained as per OSHA HAZWOPER Regulations (40 hrs).

Waste Management of Puerto Rico

PO Box 1262

Penuelas, P.R. 00624-1262

(787) 836-2058, 836-2123, 721-4382

(787) 836-3715 FAX

Contact person: Rene Rodriguez

Disposal method: Land filling of non-hazardous materials including asbestos containing materials. Hazardous materials are shipped to the US mainland for disposal.

Type of waste accepted: Waste Management of PR will collect and transport all waste streams including those that are determined to be hazardous. It will only landfill at their facility non-hazardous waste, waste with less than 2 ppm PCB, and asbestos-containing materials, but will coordinate disposal of hazardous or toxic waste in the US. A sample of the waste is analyzed for RCRA characteristics and PCB content before disposal. Oil and non hazardous liquid wastes are land filled after solidification with caliches. The facility has a solidification pit.

Capacity: at present it is 5.82 cuerdas. Sixteen (16) cuerdas are available for expansion.

Temporary storage area: The facility has six 25,000-gallon holding tanks and a lagoon for oily waste, various dump trucks of 35 cubic yards capacity and tank trucks of 4,000 and 8,000 gals capacity. Land available for expansion may be used also for temporary storage of solid or solidified liquid waste.

Training: Waste Management of PR personnel are trained as per OSHA HAZWOPER regulations (40 hrs).

Safety-Kleen Envirosystems Co. of P. R. Inc.

Hwy PR-2 Km 51. Bajura Ward

P.O. Box 31098

Manati, P.R. 00674

(787) 854-1090 (24 hrs)

Fax: (787)884-4452

Contact person: Carlos Vazquez, Orlando Rosado

Disposal method: SKE has synthetic fuel manufacturing and solvent recovery facilities and a wastewater treatment plant in Manati, P.R. The synthetic fuel containing oil and solvents is then used as substitute fuel in a cement kiln leased from San Juan Cement Co. in Dorado P.R. The wastewater treatment plant handles metal bearing waste, organics and oil and grease. SKE also provides other treatment and disposal alternatives such as incineration and land filling of hazardous wastes in the US mainland, and re-refining and processing of oil in Canada.

Type of waste accepted: SKE will clean up, collect, transport and treat/dispose of all kinds of waste streams, hazardous and non-hazardous. The waste is fully characterized to determine the best disposal alternative.

Capacity: According to a modified Part A permit application (dated 8/6, 1990). SKE processes about 75,000,000 lbs/yr of RCRA wastes ("D", "F", "K" "U" and "P" wastes in the solvent recycling activities and 50,000,000 lbs/yr of RCRA wastes in the synthetic fuel manufacturing and burning activities.

Temporary storage area: SKE has capacity for more than 1,650 gals in containers (drums, barrels, etc.) and approximately 3 million gallons in: arks and other containers. Storage capacity includes storage for processing as well as for transfer to other disposal facilities.

Training: SKE personnel are trained as per OSHA HAZWOPER regulations (40 hrs). SKE has response capability for levels B and C personal protection.

In addition to the above mentioned companies, there are EQB approved or endorsed municipal landfills in PR that accept solidified non-hazardous and oil contaminated waste for disposal. These will not treat the waste; the client or its contractor must take the waste to the landfill in a form approved for land filling. No hazardous waste can be land filled in PR.

Municipal Landfills

Municipal landfills in Puerto Rico that are permitted and/or endorsed by EQB include:

Permitted
Anasco

Endorsed
Ajbonito

PUERTO RICO & U.S. VIRGIN ISLANDS
AREA CONTINGENCY PLAN

Hormigueros	Dorado
Jayuya	Fajardo
Mayaguez	Florida
Ponce	Guayanilla
	Juncos
	Lajas
	Penuelas
	San German
	Santa Isabel

Other alternatives to consider are those companies in PR that are not TSD facilities but will coordinate disposal of spill wastes in TSD facilities elsewhere. These companies provide disposal coordination services in addition to clean-up, collection, transportation and interim storage services (on-and off-site) of spill wastes. These companies are presented in alphabetical order and their inclusion in this list does not necessarily represent endorsement by EPA or the USCG.

Caribe Hydro blasting Environmental Division

Road 385, Km. 32.7, Tallaboa Ward

Penuelas, PR 00624

(787) 836-1110 (24 hrs)

(787) 836-2460

(787) 836-0577 FAX

Contact persons: Jorge Arrufat/Angel Serrano

Caribe Hydro blasting (CHED) will respond to spill incidents in PR and the USVI. CHED will coordinate disposal based on results of RCRA characteristics analysis. If waste is non-hazardous, it is disposed of in an EQB-endorsed or permitted landfill. If hazardous, the waste is patched and shipped for disposal in the US. CHED provides on-site and off-site interim storage of waste in tank trucks of 6-8-10--l 2,000 gals capacity and storage tanks of 6,000 and 8 000 gallon capacities.

CHED personnel are trained as per OSHA HAZWOPER regulations (40 hrs).

CHED has response capability for levels A, B, C and D personal protection.

Caribbean Environmental Services

P.O. Box 1838

Guaynabo, PR 00970-1838

(787) 643-0098 (24 hrs)

(787)731-0555

(787) 731-0075 FAX

Contact person: Angel Pereles (cell: 787-635-3451, Ernesto Balay (cell: 787-594-0564)

Caribbean Environmental Services (CESI) will respond to spill incidents in PR and the USVI. It will coordinate disposal based on results of RCRA characteristic analyses (supplied by client).

If solid spill waste is non-hazardous, it is disposed of in an EQB-endorsed or permitted landfill. The recovered material, if non-hazardous, is sent to other facilities for processing and/or disposal. If hazardous, it is shipped in drums to a TSD facility in the USA. CESI provides on-site interim storage of spill-generated non-hazardous waste in tank trucks of 10,000 gallon capacity. CESI will not provide interim storage in its facility.

CESI personnel are trained as per OSHA HAZWOPER regulations (40 hrs). CESI has response capability for levels A, B, C and D of personal protection.

Environmental Control Services

P.O. Box 467
Bayamon, PR 00960
(787) 251-1010 (24 hrs)
(787) 780-7015 FAX
Contact person: Daniel Caban

Environmental Control Services (ENVCO) is a limited service company providing services to PR and the USVI. At present, it is not permitted by EQB to handle hazardous waste. ENVCO will respond to non-hazardous spill incidents. ENVCO coordinates non-hazardous spill waste disposal. If the EQB permit to handle hazardous waste is granted, it will also coordinate disposal of such wastes. Interim storage is provided on-site in 10,000 gal tank trucks. ENVCO will not provide interim storage in its facility.

ENVCO personnel are trained as per OSHA HAZWOPER regulations (40 hrs). ENVCO has response capability for levels B, C and D personal protection.

ENSCO Caribe

PO Box 361282
San Juan, PR 00936-1282
(787) 788-8000 ext.5350 (24 hrs)
(787)641-5391 Fax
Contact person: Maria Teresa Mendez

Ochoa Environmental (OES) will respond to spill incidents in PR and the USVI. It will coordinate disposal based on results of RCRA characteristic analyses. If solid waste is non-hazardous, it is disposed of in an EQB-endorsed or permitted landfill. The recovered liquid material, if non-hazardous, is sent to other facilities for processing and/or disposal. If hazardous, OES will coordinate disposal based on waste characteristics. Facility acts as a waste transfer station with a 10-day storage capacity. OES will provide 75,000 gals total capacity of on-site storage.

OES personnel are trained as per OSHA HAZWOPER regulations (40 hrs).
OES has response capability to levels A, B, C and D personal protection.

5220.10 Fueling and Maintenance Facilities

- **Bunkers of St. Croix** - PO Box 24009, Gallows Bay USVI, 00824
- **Camioneros** - PO Box 13877 Santurce, PR 00908
- **Champion Petroleum** - PO Box 1987 Carolina, PR 00984
- **Dana Transport Inc** - PO Box 1856 Bayamon, PR
- **Gasolinas Caribe** - PO Box 1650, San Sebastian PR 00685
- **Harbor Fuels** - PO Box 9023111, San Juan, PR 00902
- **Puerto Rico Fuels Gas Inc.** - PO Box 10028, Ponce, PR 00732
- **Club Nautico** - PO Box 1133, San Juan, PR 00902; Diesel 12,00 gallons;
Gasoline 4,000 gallons
- **San Juan Bay Marina** - Fernandez Juncos Ave, Stop 10, San Juan, PR
00907
- **Puerto Del Rey Bahia de Majagua** - Highway #3 Km. 51.4, Fajardo, PR
007384; Diesel 24,000 gal.; Gasoline 12,000 gal.
- **Green Cay Marina** - Parcel 2, 5000 Estate Southgate, Christiansted, St.
Croix, USVI 00802-4230; Diesel 6,000 gal Gasoline 4,000 gal.
- **St. Croix Marina** - Plott 5063, Gallows Bay, St. Croix, USVI 00820; Diesel
12,000 gal Gasoline 1,200 gal
- **Limetree Bay Terminals** - P.O. Box 127 Kingshill, St. Croix, USVI 00851
- **WAPA** - P.O. Box 1009 Christiansted, St. Croix USVI 00820
- **St Croix Aluminum** - P.O. Box 1525 Kingshill, St. Croix USVI, 00851
- **Shuama Trucking Corp.** - P.O. Box 6951 Christiansted, St. Croix
- **Domino Oil Co. Inc.** - 8AA Estate Ross, Charlotte Amalie St. Thomas, USVI
00802
- **ESSO Standard Oil Co., Cyril E. King Airport** - P.O. Box 8619 St. Thomas,
USVI 00801
- **Texaco Caribbean Inc.** - P.O. Box 303740 St. Thomas, USVI 00803
- **Fish Hawk Marina** - St Thomas, USVI 00801
- **Crown Bay St Marina** – St Thomas, USVI 00801
- **Haulover Marine Yachting Center** - St. Thomas, USVI 00801
- **La Vida Marine Center** - St. Thomas, USVI 00801
- **Tropical Marine** - 6747 Estate #27 Nadir St. St. Thomas, USVI 00802
- **Ruan's Marine Service** - St. Thomas, USVI 00801
- **American Yacht, Red Hook** - St. Thomas, USVI 00801
- **Compass Point Marina** - St. Thomas, USVI 00801
- **Sapphire Beach Resort and Marina** - Sapphire Beach, St. Thomas, USVI
00801

5220.11 Fish and Wildlife Response Facilities and Resources

US Fish and Wildlife spearheads the recovery of any wildlife affected by any type of catastrophes or any spills inland and coastal. Dead animals are usually referred to the USFWS Enforcement Division as evidence. Animals in critical conditions are referred to the Department of Puerto Rico Natural Resources where these animals receive the proper care. Marine mammals, under the state program, are transported to the Mayaguez Zoo. Terrestrial wildlife is transported to the Cambalache Forest, under the DNER Wildlife Resources Division.

USFWS	(787) 851-7297
Ecological Services Carr 308 Km 5.1 Barrio Corozo Boqueron, PR 00622	
Enforcement S/A Ariel Vazquez	(787) 209-8585
Culebra Office Ana Roman <i>Ana_Roman@fwl.gov</i>	(787) 742-0115 (787) 396-7711
St Croix/St Thomas Office Michael Evans <i>Michael_Evans@fwl.gov</i>	(340) 773-4554 (340) 690-9451
Vieques Office Mike Faran-Diaran <i>Mike_Faran-Diaran@fwl.gov</i>	(787) 741-2138 (787) 457-0088
Department of Puerto Rico Natural Resources Angel Cruz Medina, Commissioner	(787) 724-5700
DNER Wildlife Resources Division Bosque Cambalache Carr 682 Interior Arecibo, PR Dir. LT Angel Atienza AAtienza@drna.gobierno.pr	(787) 815-1575 /24hrs (787) 502-2278
Mayaguez Zoo Dr. Luis Figueroa Mayaguez, PR	(787) 409-1185 (787) 834-8110 /office

5230 Vessel Support

5230.1 Boat Ramps/Launching Areas

The boat ramps are identified in the [GRS](#). The information on the ramps may be found on the description sheets associated with each map.

5230.2 Crane/Lifting Equipment

Most lifting equipment may be obtained from construction companies, rental companies, ports authorities, public works and other agencies that use lifting equipment. Some of the resources include:

Santiago Crane Rental PO Box 8523 Bayamon , PR 00960 Boom Trucks, Cranes, Heavy Lifting Equipment	Andrews Milton PO Box 321 Cataño , PR 00963 Crane & Heavy Lifting Machinery
Forteza Equipment PO Box 10455 Caparra Height Sta. San Juan , PR 00922 Services all of the Island	Industrial Machinery Movers Inc. PO Box 219 Bayamon , PR 00960 Emergencies
Bury Brothers Inc. Firm Delivery Ponce , PR 00715	Caribbean Steel Corp. 8176 Sub Base St. Thomas , USVI 00802 Cranes, Largest Forklift on the Islands
L & S Enterprises Inc. PO Box 8891 St. Thomas , USVI 00801 Forklifts	AAA Rental 25 Crown Bay St. Thomas , USVI 00801 Small Equipment
S&S Services 6076 Smith Bay #66 St. Thomas , USVI 00804	Reliable Rentals PO Box 6632 Sunny Island , St. Croix , 00823 Small Equipment, Pallet Mules
St. Croix Marine Gallows Bay C'Sted, St. Croix 00801	V.I. Port Authority PO Box 1134 St. Croix , USVI 00821 Container Crane

5240 Ground Support

5240.1 Vehicle Sources

Transportation

- Bus Rental and Service, PO Box 8, Guaynabo PR 00970 (experienced in moving large numbers of people)
- Santiago Bus Line Inc., Apartado 1505, Villalba, PR 00766
- Abramson Enterprises Inc., PO Box 308, Frederiksted, St. Croix 00841
- Vitron Bus Lines Inc., PO Box 1616, Charlotte Amalie, St. Thomas 00804
- Afro Car and Truck Rentals, 621 Ponce de Leon Ave., Miramar, PR 00908
- First Truck and Car, 65th Infantry, Km 2.3, Rio Piedras, PR 00924
- L & M Car Rental, 1051 Ashford Ave., Condado, PR 00907

Also visit:

[Enterprise PR Car Rentals](#)
[Hertz PR Car Rental](#)

Military support should be coordinated through the DOD representative to the CRRT.

5240.2 Maintenance

Puerto Rico

- Cummins Diesel, Call Box 2121, Caparra Heights Station, San Juan, PR 00922
- EMSCO Electrical and Mechanical, PO Box 10191, Santurce, PR 00908
- CEISCO Electrical Services, PO Box 29157, Rio Piedras, PR 00929
- Precision Marine Services, PO Box 902-1855, San Juan, PR 00902
- Puerto Rico Dry Dock, PO Box 2209, San Juan, PR 00903
- 6.Quality Boat Services, PO Box 3108, San Juan, PR 00902
- Wayne Marine Inc., PO Box 8782, Ponce, PR 00732
- D & G Enterprises, Firm Delivery, Ponce, PR 00731
- South PR Towing, PO Box 560427, Guayanilla, PR 00656
- Ponce Yacht Club, PO Box 34025, Playa De Ponce, Ponce, PR 00734 (conduct maintenance on small boats)
- Marina Puerto del Rey, PO Box 1186, Fajardo, PR 00738 (conduct maintenance on small boats)

U.S. Virgin Islands

- St. Croix Marine, Gallows Bay, Christiansted, St. Croix
- Midwest Corp., 3 Carlton, Christiansted, St Croix (conduct maintenance on gas engines)
- Caribbean Equip. Co., 73 Castle Coakley, Christiansted, St Croix (conduct maintenance on small boats)
- St Thomas Air Maintenance, PO Box 2788, Cyril E. King Airport, St Thomas, USVI 00801

5300 Services

5310 Food

Resources for food are listed in local phone books and in the “ACP Contacts” list. Food preparation may be arranged through school cafeterias, churches, hotels, restaurants, and military installations. The National Guard has portable kitchens.

Sources of Food during Disaster Relief

Although the [American Red Cross](#) is not a government agency, its authority to provide disaster relief was formalized when, in 1905, the Red Cross was chartered by Congress to "carry on a system of national and international relief in time of peace and apply the same in mitigating the sufferings caused by pestilence, famine, fire, floods, and other great national calamities, and to devise and carry on measures for preventing the same." The Charter is not only a grant of power, but also an imposition of duties and obligations to the nation, to disaster victims, and to the people who generously support its work with their donations. Red Cross disaster relief focuses on meeting people's immediate emergency disaster-caused needs. When a disaster threatens or strikes, the Red Cross provides shelter, food, and health and mental health services to address basic human needs. In addition to these services, the core of Red Cross disaster relief is the assistance given to individuals and families affected by disaster to enable them to resume their normal daily activities independently.

The Red Cross also feeds emergency workers, handles inquiries from concerned family members outside the disaster area, provides blood and blood products to disaster victims, and helps those affected by disaster to access other available resources.

Red Cross Headquarters can be contacted at: (202) 303 – 5000

5310.1 Catering/Messing Options

Puerto Rico

- Supermercados Econo, Inc. (Supermarket)
- McDonalds are individual franchises, to order a large amount of food you much contact the franchise three to four days in advance and speak to the manager.
- Burger King, when requesting large amount of food, draft a letter to their Public Relations Officer, Caribbean Restaurant Inc., PO Box 366999, San Juan PR 00936-6999
- Kentucky Fried Chicken, when requesting large amounts of food, drafts a letter to Assistant Administrator, PO Box 11858, San Juan PR 00922. Order food three days in advance anywhere from 25 to 300 orders, seven days in advance for 500 orders and over

PUERTO RICO & U.S. VIRGIN ISLANDS
AREA CONTINGENCY PLAN

- Wendy's, need one to two days advance notice for large orders, also willing to give credit, Wendy's has provided the PRNG with large orders. PO Box 11662, Caparra Heights Station, San Juan 00922
- Casa Sofia Catering Service, Piñero Ave #1268, Caparra Terrace, Puerto Nuevo PR 00921
- El Hippopotamus Delicatessen Catering Restaurant, Muñoz Rivera Ave. #880, Rio Piedras PR 00927
- Alci's Restaurant (catering to anywhere on the island)
- Mike Claudio's Catering Service, Calle 16 W 11, Ext Villa Rica, Bayamon PR 00959
- Johnny's Catering Service
- Cocina Ideal, Calle 16 SE 1201, Caparra Terrace, Rio Piedras PR 00921
- Pueblo Xtra (supermarket), Director of Operations, PO Box 363288, San Juan PR 00984

U.S. Virgin Islands

- Dolly's Kitchen St. Croix
- Roy's Catering St. Croix
- Frenchie's Catering St. Thomas
- Pueblo Supermarket, St. Thomas/St. Croix
- Grand Union Supermarket, St. Thomas/St. Croix
- Sunshine Supermarket St. Croix
- Quality Plus St. Thomas

5310.2 Sanitation Services

Supply sources for portable toilets are listed below. Consider purchasing toiletries such as toothpaste, shaving equipment, napkins, etc. from stores for personnel housed in remote areas.

- A-1 Portable Toilets Service Inc., PO Box 7569, Ponce PR 00732
- Halco Sales Inc., PO Box 4820, Carolina PR 00984
- Cruzan Environmental Services Inc., PO Box 3018, Kingshill St. Croix USVI 00851
- Charley's Trucking Service, PO Box 818, Kingshill St. Croix USVI 00851 (23 and 30 cubic yard Ro/Ro Trash Bins)
- Lew Henleys Sewage Disposal, 2A Frydenhoi, St. Thomas USVI 00802

5320 Medical

5320.1 Medical Facilities

Puerto Rico

The larger medical facilities in Puerto Rico are listed below. **None of the facilities have special resources for handling victims CONTAMINATED WITH HAZARDOUS MATERIALS.** Agencies are responsible for notifying EMS/hospitals of any contamination as soon as possible, and before a patient contaminates a facility.

Hospital De la Comunidad Terapeutica Siquiatrica, Carr. 466 Km 2 Hm 1 Bo Guerrero, Apartado 3999 Aguadilla, PR 00605	Hospital Subregional Bo. Caimital Bajo Carr. 2, Km 141.1 Apartado 3968 Aguadilla, PR 00605
Hospital General Menonita, Inc., Bo. Caonillas P. O. Box 1379 Aibonito, PR 00705	C.S. y Hospital Municipal Ave. Marginal Arecibo, PR 00612
Hospital Susoni Calle Palma #55 G. P. O. Box 145-200 Arecibo, PR 00614	Hospital Buen Pastor, Inc. Ave Jose De Diego #52 Apartado 413 Arecibo, PR 00613
Hospital Regional Ave, San Luis Carr. 129 Km. 0.7 Call Box 1500 Arecibo, PR 00613	Hospital Lafayette Sector Cuatro Calles Bo. Pitahaya Apartado 207 Arroyo, PR 00714
Casa de Salud Hospital Regional Ave. Laurel Santa Juanita Bayamon, PR 00956	Hospital San Pablo, Inc. Santa Cruz #170 G. P. O. Box 236 Bayamon, PR 00960
Hospital Matilde Brenes, Inc. Calle 2 J-9 Ext. Hermanas Davilas G. P. O. Box 2957 Bayamon, PR 00960	Hato Rey Psychiatric Hospital (MEPSI CENTER) Carr. 2, Km 8.2 Call Box 6089 Bayamon, PR 00960
Hospital Hermanos Melendez., Inc. Carra 2, Km 11.7 Apartado 306 Bayamon, PR 00960	Hospital Regional Universitario Ave. Laurel Santa Juanita Bayamon, PR 00956

PUERTO RICO & U.S. VIRGIN ISLANDS
 AREA CONTINGENCY PLAN

<p>Centro de Salud Munoz Rivera #108 Cabo Rojo, PR 00623</p>	<p>Hospital Interamericano de Medicina Avanzada (Antes San Rafael) Munoz Marin #1 Apartado 1744 Caguas, PR 00726</p>
<p>Hospital Regional Carr. 172 Apartado 5729 Caguas, PR 00726</p>	<p>Casa de Salud, Hospital Regional Turabo Gardens Apartado 5729 Caguas, PR 00726</p>
<p>Casa de Salud Centrol Medico (ASEM) Bo. Monacillos Apartado CM Caparra Heights Sta., PR 00922</p>	<p>Hospital de Area Ave, 65 Infanteria Carr. 3 Km 8.3 Apartado 3747 Carolina, PR 00984</p>
<p>Hospital General de Castaner, Inc. Carr. 135 Km 64.2 Apartado 1003 Castañer, PR 00669</p>	<p>Hospital Menonita de Cayey, Inc. H. Mendoza #4 P. O. Box 967 Cayey, PR 00737</p>
<p>Hospital de Area, Luis Barreras #5 Apartado 1247 Cayey, PR 00737</p>	<p>First. Panamerican Hospital RR 002 Carr. Estatal 787 Km 1.5 PO Box 1398 Cidra, PR 00739</p>
<p>Hospital Subregional de Fajardo Jose Ramos Lebron Ave. General Valero Apartado 1283 Fajardo, PR 00738</p>	<p>Hospital Ave. General Valero #267, Apartado 846 Fajardo, PR 00738</p>
<p>Clinica Santa Rosa, Inc. Ave. Los Veteranos Villa Rosa PO Box 988 Guayama, PR 00785</p>	<p>Hospital de Area Alejandro Buitrago Ave. Central Esq. Principal Apartado 910 Guayama, PR 00785</p>

PUERTO RICO & U.S. VIRGIN ISLANDS
AREA CONTINGENCY PLAN

Hato Rey Community Hospital (Antiguo Guadalupe) Ponce De Leon #435 Hato Rey , PR 00917	Sociedad Espanola de Auxilio Mutuo y Beneficiencia de Puerto Rico Ave. Ponce de Leon Pda 35 1/2, Apartado 1227 Hato Rey , PR 00919
Hospital Subregional Ave. Tejas Esq. Expreso Ortiz Estela Apartado 9009 Humacao , PR 00792	Hospital Dr. Dominguez, Inc. Font Martelo #300 Apartado 699 Humacao , PR 00792
Hospital Ryder Memorial, Inc. Calle Font Martelo Salida Las Piedras Call Box 859 Humacao , PR 00792	Clinica Font Martelo Inc. Ave. Font Martiello #3 Apartado 639 Humacao , PR 00792
Centro de Salud Mario Canales Torresada Calle Cementerio #2 Jayuya , PR 00664	Hospital de Area Alejandro Otero Lopez P. O. Box 1142 Urbanizacion Atenas Hernandez Carrion Manati , PR 00674
Hospital Municipal Carr 2 Km 50 Apartado 367 Manati , PR 00674 39. Hospital Doctor's Center, Inc. Carr, 2 Km 47.7 Apartado 30532 Manati, PR 00674	Clinica San Agustin Inc., Carr. 2 Km 49.5 Inter. 685 G.PO Box 991 Manati , PR 00674 41. Hospital General Carr. 2 Km 157 Bo. Sabalos Mayaguez, PR 00680
Clinica Espanola Inc., Bo. La Quinta Apartado 490 Mayaguez , PR 00681	Hospital Municipal San Antonio Calle Post. #18 Apartado 447 Mayaguez , PR 00681
Clinica Dr. Bosora #15 Apartado 170 Mayaguez , PR 00681	Hospital Bella Vista Carr. 349 Km 2-7 Cerro Las Mesas GPO Box 1760 Mayaguez , PR 00681
Hospital San Carlos Corromeo Carr. 110 Km 12.2 Bo. Pueblo Apartado 68 Moca , PR 00676	Hospital De Damas Ponce Bay Pass Ponce , PR 00731

PUERTO RICO & U.S. VIRGIN ISLANDS
AREA CONTINGENCY PLAN

Hospital de Siquiatria Bo. Machuelo Carr 14 Km 4.2 Ponce, PR 00731	Hospital Regional Bo. Machuelo Carr. 14 Ponce, PR 00731
Hospital Episcopal San Lucas, Guadalupe Final Apartado 2027 Ponce, PR 00733	Clinica Oncologica Bo. Machuelos Carr. 14 Apartado 1324 Ponce, PR 00733
Hospital San Cristobal Carr. 606 Cotto Laurel Apartado 501 Ponce, PR 00733	Hospital Ave. Las Americas Apartado 1910 Ponce, PR 00733
Centro de Salud Calle Munoz Rivera Esq. San Justo, Apartado 1551 Quebradillas, PR 00678	Hospital San Francisco, Inc. Ave. de Diego #371 Apartado 29025 65 Inf. Station Rio Piedras, PR 00923
Casa de Salud Rest. Manor Ponce de Leon #1585 Urb. Caribe Rio Piedras, PR 00926	C.P.C. Hospital San Juan Capestrano Carr. 877 Km 1-6 R2 Bz 11 Rio Piedras, PR 00928
Hospital San Gerardo Centro Rehabilitacion del Caribe, Carr. 844 Km 0.5 Cupey Bajo RFD Num 7 Rio Piedras, PR 00928	Hospital Municipal Bo. Monacillos Centro Medico Apartado 21405 Rio Piedras, PR 00928
Casa de Salud Complejo Medico Social, Ave. 65 Inf. Station Km 3 HM 4 Apartado 29396 Rio Piedras, PR 00928	Hospital Penitenciaria Estatal Administracion de Correcciones, Box 71 Rio Piedras, PR 00936
Hospital de la Concepcion Luna #41, Apartado 285 San German, PR 00683	Centro de Salud Area de San German Calle Javilla, Apartado 63 San German, PR 00683

PUERTO RICO & U.S. VIRGIN ISLANDS
AREA CONTINGENCY PLAN

Instituto Oftalmologico de Puerto Rico Ponce de Leon #160 Apartado 2206 San Juan, PR 00903	DBA Ashford/ Presbyterian Community Hospijtal, Inc. Ave Ashford #145, Condado G.PO Box 32 San Juan, PR 00936
Asociasion Hospital del Maestro, Inc. Ave. Domeneach Final G.PO Box 364748 San Juan, PR 00936	Hospital de Siquiatria Forense G.PO Box 61 San Juan, PR 00936
Hospital Industrial, Centro Medico Bo. Monacillos G.PO Box 5028 San Juan, PR 00936	Hospital Pediatrico Universitario Centro Medico P. O. Box 365067 San Juan, PR 00936
Hospital del Nino, Carr. 19 Km 6 Bo Monacillos Apartado 4831 San Juan, PR 00970	Hospital de Diego Ave De Diego #310 Parada 22 G.PO Box 41268 Minillas Station Santurce, PR 00907
Hospital San Carlos Inc., Ave. Ponce de Leon 1822 Parada 26 Call Box 8410 Santurce, PR 00907	Hospital Pavia Calle Asia #1462 Apartado 11137 Santurce, PR 00907
Hospital San Jorge, Calle San Jorge #258 Santurce, PR 00907	Doctor's Hospital Inc., San Rafael 1396 G.PO Box 11338 Santurce, PR 00936
Hospital Mimiya, Inc. De Diego 303 Parada 22 Apartado 41245 Minillas Station Santurce, PR 00940	Instituto Medico del Norte Carr. 2, Km 39.5 Bo. Algarrobo Call Box 7001 Vega Baja, PR 00694
Hospital de Area Carr. 128, Km 1.0 Apartado 68 Yauco, PR 00689	<i>This Space Left Blank</i>

Medical Facilities - Culebra

CDT Box 694
St. William Font Final
Culebra, PR 00775

Medical Facilities - Vieques

Centro de Salud
 PO Box 326
Vieques, PR 00765

Medical Facilities - Federal

- Dept. of Army
 U.S. Army Health Services
Ft. Buchanan PR 00934
- Veterans Administration
 Medical Center
 One Veterans Plaza
San Juan PR 00927
- USCG Base San Juan Medical Clinic
 PO Box 2029
San Juan PR 00902
- USCG Air Station Borinquen
Ramey, PR 00604

Medical Facilities - U.S. Virgin Islands

The medical facilities in The U.S. Virgin Islands are listed below. **None of the facilities have special resources for handling victims CONTAMINATED WITH HAZARDOUS MATERIALS.** Agencies are responsible for notifying EMS/hospitals as soon as possible and before a patient contaminates a facility, of any contamination and of any applicable precautions.

St. Thomas Hospital Sugar Estate Road #48 Intensive Care Unit St. Thomas , USVI 00802 HAZMAT: Yes	Doctor-On-Duty Vitracco Park, Bldg. #1 St. Thomas , USVI 00818
Morris F. DeCastro Clinic Box 8312 Cruz Bay St. John , USVI 00830	New Family Practice Clinic Frederiksted 516 Strand Street St. Croix , VI 00840
Kund Hansen Complex Transitional Care & Elderly Complex St. Thomas , USVI 00818	St. Croix Hospital Estate Diamond Ruby, #4007 St. Croix , USVI 00820

Charles Harwood Hospital Community Health Center 3500 Est. Richmond St. Croix , USVI 00820	Frederiksted Health Center Ingebornesbit Clinic 516 Strand St. Frederiksted St. Croix , USVI 00840
--	---

5320.2 Ambulance/EMS Services

Puerto Rico EMS

Emergency medical services throughout Puerto Rico are coordinated by the Puerto Rico Department of Health's Central Dispatch (State EMS) or through Puerto Rico Emergency Management Agency (PREMA). No transports facilities (ambulances or rescue helicopters) exist that are fitted for handling victims **CONTAMINATED WITH HAZARDOUS MATERIALS**. Any emergency medical transportation needs may be obtained by contacting the following:

- Puerto Rico State EMS
- PRDOH Emergency Coordinator
- Emergency Disaster Coordinator
- Culebra EMS
- Culebra Civil Defense
- Guardia Municipal de Culebra
- Mr. Victor Felix Menet - Civil Defense Director for Culebra
- Vieques EMS
- Vieques Civil Defense

U.S. Virgin Islands EMS

Emergency Medical Services throughout the U.S. Virgin Islands are coordinated by the local hospital or clinic on each island. No transport facilities (ambulances or rescue helicopters) exist that are outfitted for handling victims **CONTAMINATED WITH HAZARDOUS MATERIALS**. Any emergency medical transportation needs may be obtained by contacting:

- **St. Thomas** Hospital
- **St. John** Clinic
- Juan F. Luis Hospital
- **St. Croix** Hospital & Medical Center
- VITEMA **St. Thomas**
- VITEMA **St. John**
- VITEMA **St. Croix**

A list of the VITEMA duty personnel and their contact phone numbers is maintained at the Coast Guard Command Center San Juan watch desk in the "Recall Duty Lists" binder.

5400 Communications

The Communications Unit is responsible for developing plans for the effective use of incident communication equipment and facilities, installing and testing of communications equipment, supervision of the Incident Communication Center, distribution of communication equipment to incident personnel, and the maintenance and repair of communication equipment.

5410 Communications Plan

It is the Communication Unit Leader's (COML) responsibility to develop and implement a communications plan that meets the requirements of the incident and is included in the Incident Action Plan. The Communications Plan includes [ICS form 205 \(Incident Radio Communications Plan\)](#) and [ICS form 205a \(Communications List\)](#).

For most incident responses, communications management will be conducted in accordance with each agency day-to-day communications procedures, ensuring that all these different protocols are incorporated in the Communications Plan. To accomplish this, all response organizations are to follow the guidance in this section.

During larger responses, communications management will be conducted **strictly** in accordance with the guidance in the Communications Plan. The communications specialist from the following organizations will be assigned to the Incident Management Team's Communications Branch:

U.S. Coast Guard	GANTSEC Comms Officer
PREMA	Communications Manager
VITEMA	Communications Manager
Responsible Party	Communications Officer/Contractor
DOD Communications Officer	Communications Manager

Other agencies that may be needed include:

- Federal Emergency Communications Coordinator
- Federal Communications Commission; www.fcc.gov
- Federal Aviation Administration Plans and Programs Department; www.faa.gov
- General Services Administration Representative to the Caribbean Regional Response Team (CRRT); www.crrt.nrt.org/

5410.1 Incident Communications

There are several communications resources available in Puerto Rico and the USVI. As each incident is different it will be important for the Communications Unit Leader to quickly assess the communications challenges that are arising or will arise if the response becomes a multi-agency response and then quickly request access to the appropriate radio/communications caches available (as outlined in [Section 5410.3](#)). It should be noted that in many cases, the RP's OSRO (if in the event of a pollution incident) may have access to radios and other communications equipment as well.

Below are a couple of general channels/frequencies commonly used by the USCG:

- **Channel 21A (157.05 MHz)** Communication between USCG units and other USCG personnel who are part of the FOSC staff.
- **UHF 345.0** The primary working frequency between the Unified Command and USCG aircraft.
- **Channel 21A** Primary working/SAR frequency.
- **Channel 16 - (156.8 MHz)** Designated under international convention for use for ship-to-ship and ship-to-shore hailing and distress in international waters. ALL users are required to use channel 16 for only these purposes and then switch to other channels for subsequent communications. Oil spill response is no exception.
- **Channel 13 - (156.65 MHz)** Designated bridge-to-bridge hailing and navigation safety frequency in inland and offshore waters. It may be used only to establish contact and make arrangements between vessels in crossing, meeting, or overtaking situations in accordance with the International or Inland Navigation Rules.
- **Safety Frequency: Ch. 06 (156.3 MHz)** Designated as the frequency which may be used by all parties for communication on matters involving human health and safety. Federal Communications Commission (FCC) regulations require all vessels equipped with VHF-FM capability to have this channel. As there is expected to be little other traffic on this channel during an oil spill response, this should be monitored by all involved units that have this channel available, and regarded as a tertiary channel for the response.

Incident Communications Protocol

Communications must follow the command structure to be effective. Communications within the Incident Command System will be accomplished mostly by telephone or radio. Under the ICS response structure, communications will be accomplished as follows:

- The FOSC will assign a Communications Unit Leader at the beginning of an incident. The COML will be the communications control point for all assets, agencies and response organizations involved in the response.

- All agencies, organizations, section chiefs, operational units and special teams are to check in with the command post COML at the beginning of a response for a communications brief and communications assignments.
- Emergency communications take precedence over all other types of communications and message traffic.
- Communications discipline will be maintained at all times. Only transmit essential information to keep transmissions short and to point.
- Nothing in this plan precludes any agency or organization from using its own internal communications plans or procedures to maintain their normal operations.
- Communications logs will be maintained for all voice communications.
- Communications to and from the command post will be done by facsimile, or data link, whenever possible. This will provide an ongoing written communications record, prevent misinterpretation of information and help ensure all issues are addressed.
- General Staff Sections (Planning/Operations/ Logistics/Finance) will normally communicate between each other by land line or data link, not by radio.
- Aircraft and surface vessels will normally communicate to the command post via voice communications to the command post communications center (normally a communications trailer). Communications will be dispatched to the appropriate Section for action.

5410.3 Communications Support

Virgin Islands Territorial Emergency Management

Has 3 Mobile Command Posts that will provide communication to each of the VITEMA EOC's on St. Thomas, St. Croix and St. John, and the EOC's of the V.I. National Guard units.

National Response Corporation

Has three 20 ft. X 8 ft. X 8.5 ft. high mobile communications trailers each with two active work stations. They have full marine and aviation capability (UHF, VHF, HF/SSB AM), SATCOM, Cell Phones, land lines, self supporting generator, kitchen, bath and 6 person conference table. Trailers may be deployed on a C-130, Northwestern 747, by helo, vessel and tractor trailer.

US Army Corps of Engineers

Has one mobile command post in San Juan. It has AM/FM radios, a microwave oven, and 30 gallon fresh water tank and can sleep two persons.

Marine Spill Response Corporation

This company has mobile communications suites that are air, land and water transportable. Remotely operated by the user up to 2,000 ft. away, they have VHF, UHF and HF capability. They are computer controlled which allows patching between different communication networks.

They have a satellite linked telephone system and a data access system that will permit Local Area Network (LAN) connection with as many as 48 deployed Macintosh workstations.

USCG Deployable Communications Resources

To access all of the CG resources outlined under Section 5410.30, contact:

USCG CAMSLANT
Normal Working Hours
(757) 398-6499

After Normal Working Hours
Comms Watch Officer
(800) 742-8519 (Option 0)

CAMSLANT Contingency Communications Team

The USCG Communications Area Master Station Atlantic (CAMSLANT) Contingency Communications Team consists of an Operations Specialist (OS) Chief, OS First Class (OS1), Information Technician First Class (IT1), Machinery Technician First Class (MK1) & two Electronic Technician Second Classes (ET2s) that deploy with a mobile communications trailers or Transportable Communications Centrals (TCC's).

There are two TCC's: Transportable Multi-Agency Communications Central (TMACC) and Transportable Multi-Mission Communications Central (TMMIC); both are LANTAREA assets maintained and operated by the Contingency Communications Team based out of CAMSLANT located in southern Chesapeake, VA close to the VA/NC border. The TMACC & TMMIC provide comms support when temporary communications facilities are required. They deploy on short notice in support of, but not limited to, natural disasters (hurricane relief, etc.), Homeland Security operations, Search and Rescue, law enforcement, & COTP operations. The TMACC is the larger of the two TCC's. The TMACC is equipped with a broad range of communication and command and control systems that allow for interoperability between Coast Guard, DOD, Customs, and DEA, local and state authorities (can accommodate 2-3 personnel comfortably, normally manned by 2 personnel). TMMIC was primarily developed to support Coast Guard missions, but can also work with other agencies. TMMIC is the smaller of the two TCC's (can accommodate 1 person comfortably, normally manned by one person, but has a two person max).

The Contingency Team remains in B-6 status 24x7/365 for mission readiness. The TCC's are coupled with rugged F-750 tow vehicles and are also C-130 deployable to ensure rapid deployment in response to a variety of mission demands.

Capabilities of the TMACC and TMMIC

Both units provide:

- Capabilities to operate and monitor all Coast Guard frequencies; clear, protected, and secure.
- Multiple record messaging circuits.
- Internet, Intranet and limited SIPRNET Access. (dial-up)
 - TMACC has some additional communication and system capabilities (i.e., ICE Imagery, Officer in Tactical Command Information Exchange Subsystem (OTCIXS), and Customs over the Horizon Enforcement Net (COTHEN).
- Interoperability with other federal, state, and local frequencies.
- Capabilities to operate and monitor all Coast Guard frequencies; clear, protected, and secure.

Each unit may be deployed with a Deployable Rapid Assembly Shelter (DRASH) that is capable of acting as a command and control center for a small staff. Also included with the DRASH tents are portable air conditioning units that are available upon request.

The TMACC and TMMIC are also self-supporting through the use of two diesel generators that provide power to all onboard systems (including air conditioning) in the event that shore power is not available on site. Within the trailers, the TMACC can comfortably accommodate two watch standers and one individual typically mans the TMMIC during operations.

Enhanced Mobile Incident Command Posts (eMICP)

The enhanced Mobile Incident Command Post (eMICP) is a trailer outfitted with temporary office and conference room facilities. The eMICP can be deployed alone or interfaced with the MCV to augment organic C4&IT capabilities. The eMICP provides a platform to conduct Coast Guard Command and Control, act as an Incident Command Post, and support staff working an event. The eMICP is a conference room on wheels with a built in communications package to equip the conference room with Type I classified and Type III SBU (sensitive but unclassified) voice and data. The eMICP provides various communications systems along with twelve work stations and a conference room table. A tractor and a commercially licensed driver-team will tow the eMICP to any Continental United States (CONUS) location.

Mobile Communications Vehicles (MCV)

The Mobile Communications Vehicle (MCV) can be deployed independently to provide robust communications to an established command center, or to an ad hoc environment such as a hotel room. It is designed to interface with a command center or eMICP to enhance classified and unclassified voice, and radio (HF, UHF, VHF) communications as well as provide voice and data interoperability with Coast Guard units, state, local, and federal interagency partners. The vehicle was designed to be C130J transportable to both CONUS and Outside the Continental United States (OCONUS) locations.

Portable Computer Store (PCS)

The Portable Computer Store (PCS) is a contingency cache of six kits totaling 30 CG Standard Workstation III (SWIII) laptops and six routers which can be used to augment resources at a unit for surge operations, or establish a limited Local Area Network (LAN) in a temporary command and control facility. As a deployable kit, each PCS provides the critical equipment necessary for users to access vital business and operational tools. Each PCS kit contains a 16-port Voice Protocol Network capable router, five SWIII laptop computers, and necessary power supplies. Users may directly connect the laptops to existing Coast Guard Data Network plus (CGDN+) connections in Coast Guard facilities, or access CGDN+ through the internet using remote access services. The router enables up to 15 machines to share a single data connection for access to the Internet or CGDN+. Each user must have a remote access token to facilitate CGDN+ access when not directly connected to a CGDN+.

Portable SIPRNet (PS)

The Portable SIPRNet (PS) provides secure communications up to the level of SECRET. The portable SIPRNet asset consists of standard approved image laptops, a satellite terminal and network equipment necessary to provide connections to SIPRNet at remote locations. It is housed in flyaway cases that can be transported by two personnel as carry-on baggage on commercial aircraft. PS can be deployed independently or as a module that plugs into the eMICEP and MCV.

5410.4 Communications Facilities

Marine Spill Response Corp.	MSRC has mobile communications suites. See paragraph 5200.4 below.
U.S. Army Corps Engineers	USACE has one mobile command post in San Juan. See paragraph 5200.4 below
U.S. Coast Guard	The USCG has a communications center located in San Juan. It has full VHF, UHF and HF capability, along with military secure and non-secure comms. Larger Coast Guard and Naval vessels could be called in to perform air traffic control services. The Coast Guard also has a mobile communications trailer. See paragraph 5200.4 below.
National Response Corporation	NRC has 3 mobile communications trailers. See Section 5410.3.

PREMA

Has a communications center located at its emergency operations center (EOC) in San Juan. From here Civil Defense is capable of contacting all government agencies of Puerto Rico and requires each agency's pre-designated emergency coordinator to report to the EOC. They also have direct comms capability with Naval Station Roosevelt Roads. PR Civil defense should be contacted whenever you are unable to contact another PR agency in an emergency.

Territorial Emergency Management

VITEMA is the net control station for emergency communications in the U.S. Virgin Islands. They have the capability to communicate via all modes of normal communication. They also have one (1) mobile communication van. A detailed description of the V. I. Comms capability may be found in the V.I. Territorial Emergency Communications Plan. Capability includes a HF - Operation SECURE Direction and Control Net, FEMA National Radio System (FNAMS) and interagency 800 MHz radio tracking system.

USVI National Guard

The VING Radio Net is a single sideband net used in support of the V.I. Government during natural or civil emergencies. More information may be found on VING Net in the V.I. Emergency Operations and Disaster Control Plan. VING Net uses Harris/Motorola radios on 8168.5 kHz USB (primary) and 9121.0 kHz USB (secondary).

Federal Emergency Management Agency

FEMA in Puerto Rico maintains a communications link with FEMA in New York. They also have a communications center that monitors the working channels for following local agencies: VITEMA, PREMA, Police, and Local Weather.

PR Department of Natural and Environment Resources

DNER has hand held radios and base stations, but do not have a FCC assigned working frequency.

**St. Croix Amateur
Radio Emergency
Service (ARES)**

Composed of FCC licensed amateur radio operators who have registered their capabilities and equipment for public communication duty. More information may be found on ARES in the V.I. Emergency Operations and Disaster Control Plan. The St. Croix Emergency Net is on 147.250 MHz repeater, with 146.520 Simplex as an alternative.

5500 Reserved

5600 Reserved

5700 Reserved

5800 Reserved

5900 Reserved for Area/District