



Environmental Response Team

September 2015

General Brief





Environmental Response Team (ERT)

4 Established in 1978

4 32 multi-disciplinary staff

4 Chemists, Toxicologists,
Engineers, Industrial Hygienists,
Scientists, Health Physicist, Hydro-
geologists.

4 Technical Contract Support



ERT Office Locations



Staff by Location

Edison, NJ (17)

Research Triangle Park, NC (1)

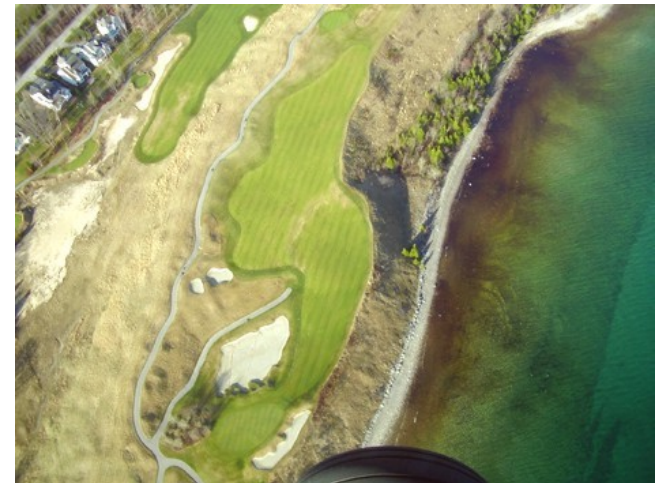
Erlanger, KY (3)

Las Vegas, NV (10)



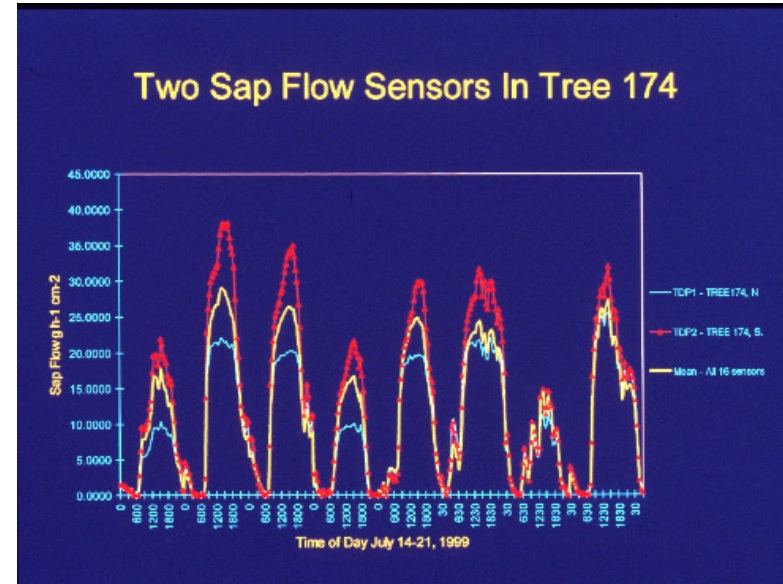
ERT's Mission...

- 4 Support the nation's response, cleanup and renewal of its contaminated land, water and air.
- 4 Promote development of **technology** and **procedures** in areas of relevant science and engineering
- 4 Share information & training
- 4 Support OSWER programs & policy

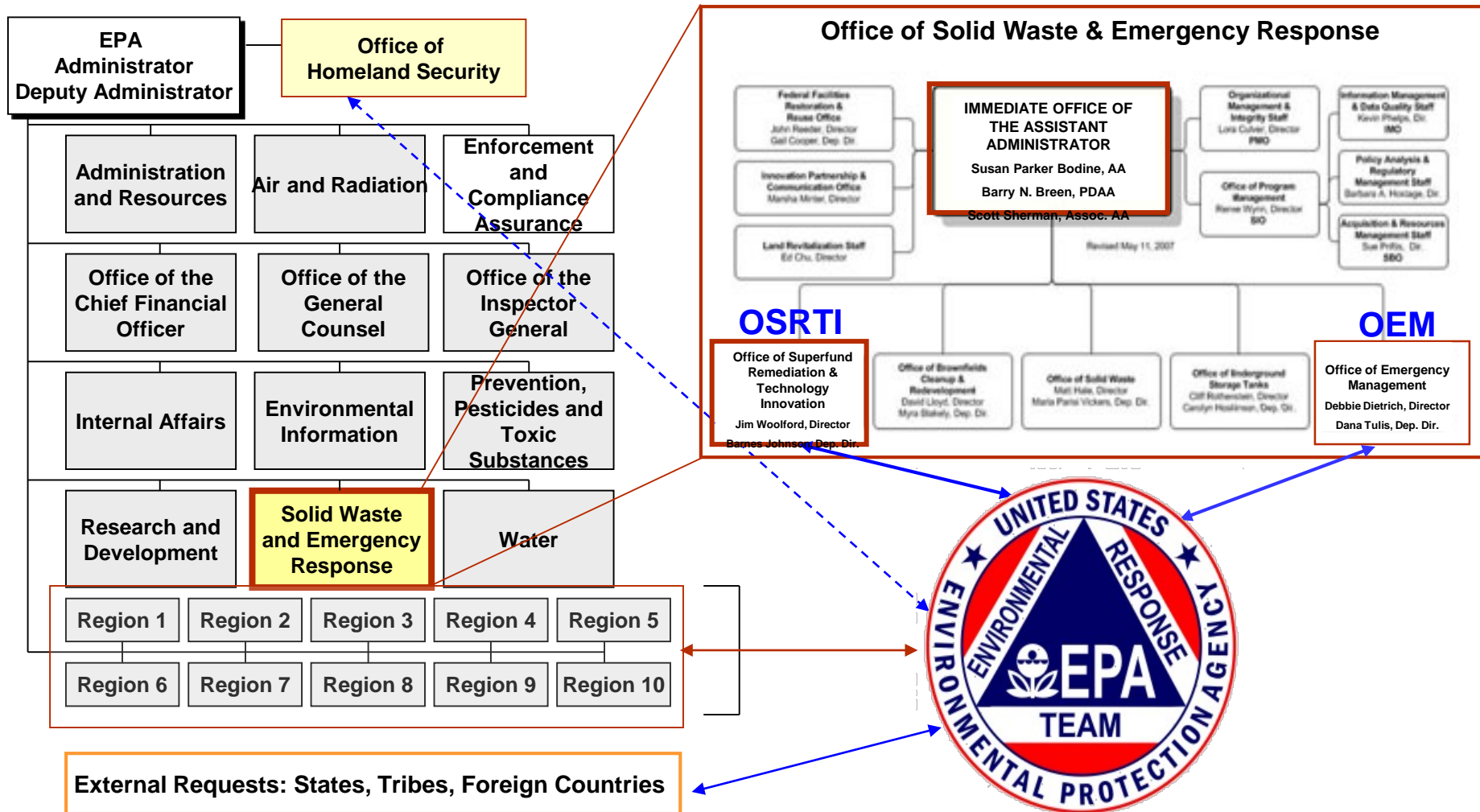


Services...

- 4 Act as technical advisors to Remedial Project Managers & and On-Scene Coordinators
- 4 Explore innovative and emerging technologies
- 4 Outreach activities
- 4 Superfund and Oil in-house consultants

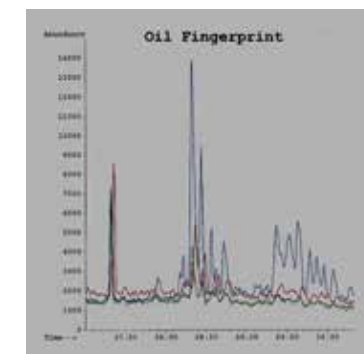


The ERT faces unique challenges in fulfilling its obligations to OSC's and RPM's as well as multiple Program Offices



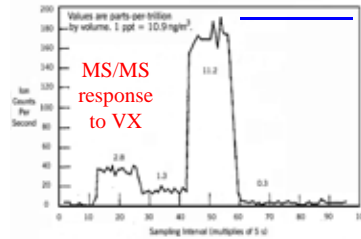
ERT Response Capabilities

- 4 Complex, unique, multi-media sampling & monitoring
- 4 Viper, Snapper
- 4 Air monitoring
- 4 Oil spill response & forensic fingerprinting
- 4 Technical assistance for health & safety
- 4 Information management technology
- 4 Analytical – rapid turnaround, field analytics
- 4 Level-A capabilities

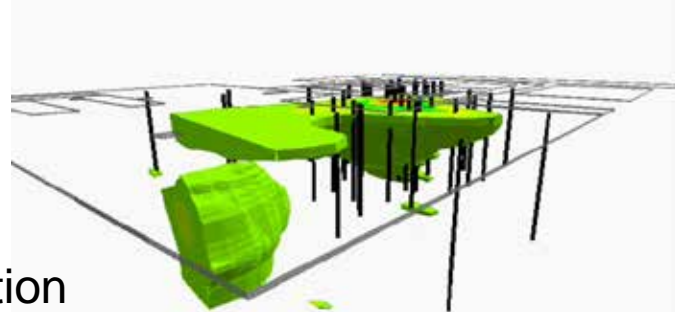


ERT Assets

- 4 TAGAs, Robots
- 4 Contaminated water Dive Unit
- 4 Radiation detection resources
- 4 Contaminant Fate & Transport modeling
- 4 Response & Command vehicles
- 4 Viper & Snapper
- 4 Training Contract



Experienced in ...



- 4 Field Analytics
- 4 Data Management
- 4 Health & Safety
- 4 Risk Assessment
- 4 Vapor Intrusion
- 4 Radiation
- 4 Document Review
- 4 Performance Measures
- 4 Site specific evaluation
- 4 Data Interpretation
- 4 5 and 10 year project reviews
- 4 QA assistance
- 4 Multi-discipline Remediation Technologies
- 4 Fate & Transport/Hydrogeology
- 4 Multi-media sampling
- 4 Contaminated Sediments



Why call ERT?

Meeting Deadlines, RODs,
Construction Completions ...

Conflict Resolution or
Technical Refereeing

Unique, Timely Approaches

Cost Effectiveness
Streamlined Solutions

Special
Studies/Projects



ERT Support to Sites

- 4 *Definition of ERT Site Support - Technical support that ERT provides for an emergency response, removal and remedial site, oil spill response and predeployment which may last for a few days to several years depending on the nature and complexity of the support requested by the OSC's and RPMs*

Program Supported in FY 2015	Number of Sites
Emergency Response	21
Removal Sites	48
Remedial Sites	54
Oil Spill Sites	07
Predeployments	05
TOTAL	135



International Responses and Site Support

- 4 Turkey
- 4 Taiwan
- 4 Brazil
- 4 Australia
- 4 El Salvador
- 4 Russia
- 4 Kuwait (Operation Desert Storm)
- 4 Haiti (Earthquake and Khian Sea)
- 4 Romania
- 4 Thailand
- 4 Vietnam
- 4 Uzbekistan
- 4 Nigeria
- 4 Sri Lanka
- 4 Mozambique
- 4 Sudan
- 4 Ethiopia
- 4 Philippines
- 4 Costa Rica
- 4 Honduras
- 4 Israel
- 4 China
- 4 Mexico
- 4 Venezuela
- 4 Cameroon
- 4 Latvia
- 4 Kenya
- 4 Trinidad



ERT Contributions to EPA's Emergency Response, Removal, and Homeland Security Programs – A Look at the Past That Has Already Shaped Your Future

- 4 The “Gold Standard” for Data Management Information Management and Delivery (Scribe, Scribe.NET, epaossc.org, RCMS, WebEoc)
- 4 Health and Safety SOPs, Chapters and Levels of Protection (ABCD)
- 4 Vapor Intrusion Investigations (formerly known as soil gas surveys)
- 4 The only real-time mobile laboratory that can detect compounds down to parts per trillion and parts per quadrillion – TAGA
- 4 Activity based asbestos sampling techniques
- 4 Analytical Method Development
- 4 Oil Spill Response – SMART and SCAT
- 4 Biosolids for mining sites
- 4 Bioremediation for wood treating sites
- 4 Mercury response and cleanup

4 Training development and delivery based on the body of work that ERT and the Regions perform



Major ERT Contributions

- 4 Low Mass High Velocity destruction of laboratory chemicals
- 4 Implementation of telemetry aspect of remote data collection and delivery (Viper)
- 4 Robotics investigation and evaluation
- 4 Mechanism for video documentation of hazardous waste site and emergency response operations (ERTV)
- 4 Development of the Agency's Incident Command System and training delivery
- 4 International responses
- 4 Served as contact for White House water emergencies and other incidents
- 4 Agency's first Bio response – Salk Institute - Pennsylvania

