

# Emergency Response Guidebook 2016 (ERG2016)

## Summary of Changes from ERG2012

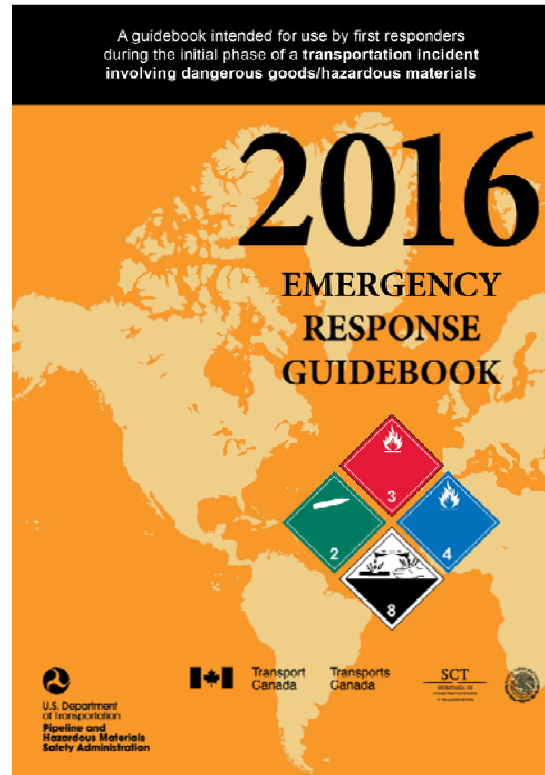


U.S. Department of Transportation  
Pipeline and Hazardous Materials  
Safety Administration

To Protect People and the Environment From the Risks of  
Hazardous Materials Transportation



The Guidebook cover has been updated

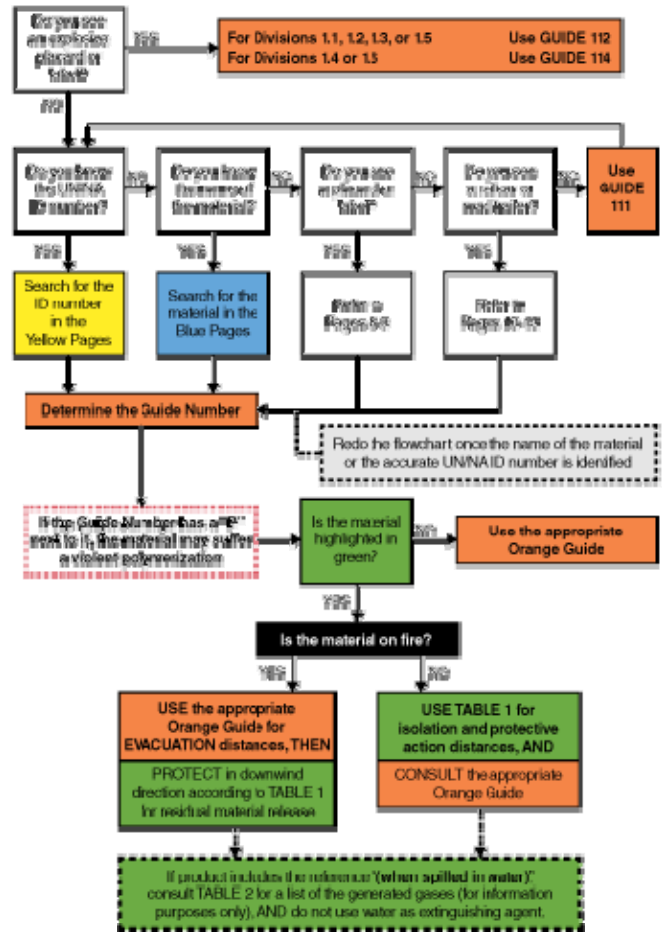


U.S. Department of Transportation  
Pipeline and Hazardous Materials  
Safety Administration

To Protect People and the Environment From the Risks of  
Hazardous Materials Transportation



# “How to use this Guidebook” Instructions are now in a flowchart



- Many sections have been expanded and/or revised, including:
  - Shipping documents (Papers)
  - Table of markings, labels, and placards and initial response guide to use on-scene
  - Rail car and road trailer identification charts (including more detailed information on each)
  - Pipeline transportation
  - Protective clothing
  - Improvised explosive device (IED) safe stand off distance chart
  - Glossary
  - Emergency response telephone numbers



- New sections have been added:
  - Local emergency response numbers (to be filled by user)
  - Table of Contents
  - Globally harmonized systems (GHS) of classification and labeling of chemicals
  - Information about emergency response assistance plans (ERAP) for Canadian users



- Index list of dangerous goods in order of ID number (yellow-bordered pages) and the Index list of dangerous goods in alphabetical order (blue-bordered pages):
  - Addition of all new dangerous goods listed in the UN Recommendations on the Transport of Dangerous Goods up to the 19<sup>th</sup> revised edition
- Emergency response guides (“Guides”/orange-bordered pages):
  - Revision of some guide information
  - Two guides have been added for adsorbed gases
  - Identification of potential emergency response assistance plan (ERAP) products for Canadian users



- Table of initial isolation and protective action distances (Green-bordered pages):
  - Updated initial isolation and protective action distances (Tables 1 and 3) based on new toxicity data and reactivity research
  - Added “Estimating wind speed from environmental clues” for Table 3



For more information, contact:

U.S. Department of Transportation  
Pipeline and Hazardous Materials  
Safety Administration  
1200 New Jersey Avenue, S.E.  
Washington, D.C. 20590

Phone:  
202-366-4900

Email:  
[training@dot.gov](mailto:training@dot.gov)

<http://hazmat.dot.gov>



U.S. Department of Transportation  
Pipeline and Hazardous Materials  
Safety Administration

To Protect People and the Environment From the Risks of  
Hazardous Materials Transportation

