



Department of  
Environmental  
Conservation

# Crude Oil Spill Response Planning & Preparedness

October 30, 2015

# Executive Order 125

- Issued by Governor Cuomo in January 2014
- Directed several NYS Agencies to review crude oil transportation and recommend actions
- Governor then directed actions by State Agencies and called on Federal authorities to support and act
- Promoted and supported legislative actions to enable and fund NYS Actions

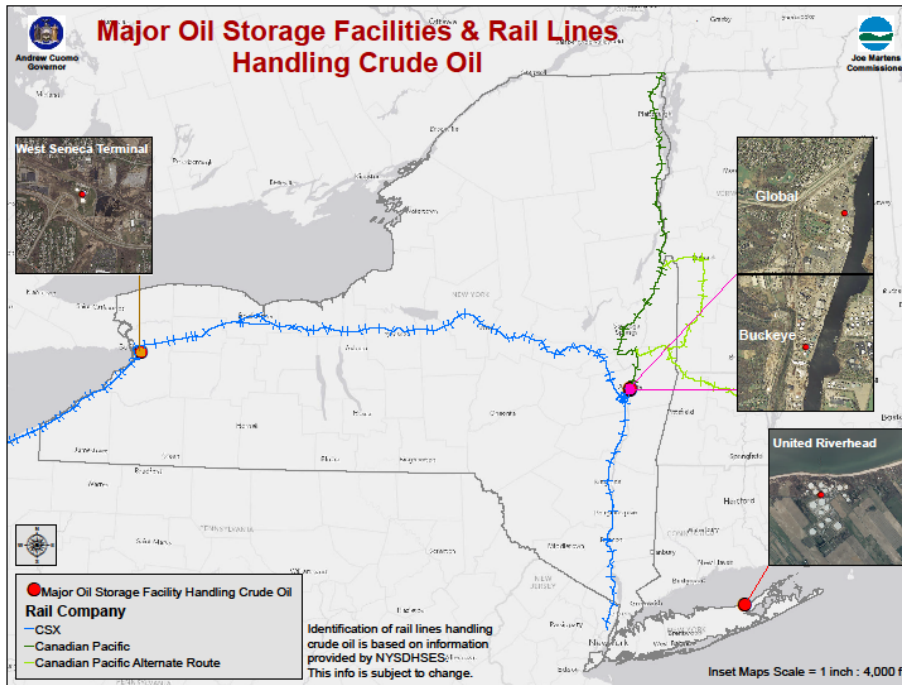
# FY 2015 -16 Budget

- DEC was provided \$2.1 million for use in implementing EO 125, to be used to:
  - Retain a contractor to collect information and databases, and draft initial Geographic Response Plans (GRPs) for counties affected by rail transport of crude oil
  - Purchase trailers and spill response equipment for local first responders
  - Provide training, including hands on use, of the equipment and tactics to be used for protective measures

# FY 2016-17 Budget

- DEC has requested funding to continue implementation of EO 125, in order to:
  - Complete GRPs in counties near the Crude by Rail Counties
  - Purchase additional trailers and equipment to distribute to local responders
  - Continue training & update existing plans
  - Maintain existing equipment

# Crude Oil Rail Routes in NYS



Counties:

- Albany
- Cayuga
- Chautauqua
- Clinton
- Erie
- Essex
- Genesee
- Greene
- Herkimer
- Madison
- Monroe
- Montgomery
- Oneida
- Onondaga
- Orange
- Rockland
- Saratoga
- Schenectady
- Ulster
- Washington
- Wayne

## NYSDEC Actions

- Hiring of 8 additional staff for EO 125
- Prepare Geographic Response Plans:
  - Based on Clinton County Pilot
  - For 21 Counties - Crude by Rail Corridor
  - Webinar on statewide effort in June 2015
  - Meetings with local Emergency Managers
  - Development of draft GRPs by DEC consultant

# Crude Oil Incident Planning/Response

- Inter-Agency Working Group:
  - DEC, DHSES (OEM, OFPC), DOH, DOT, NYSP (EM)
  - US EPA, USCG
- Integrating public safety, public health and fire suppression actions into existing “traditional” spill response framework:
  - Area Contingency Plans (ACPs)
  - Geographic Response Plans (GRPs)
- Goal: Single, coordinated response

# Sensitive Resource Maps (SRMs) Inland Zone

- Will address the current lack of sensitive resource mapping along the railroad corridors transporting unit trains of crude oil
- Developed by DEC staff using existing:
  - Databases maintained by NYSDEC
    - DER, DOW, DFWMR, Habitat
  - Also external databases
    - DOH, NYSEd, OCFS, DHSES, OPRHP
- Utilizes publically available data if possible
  - However, some security sensitive info needs to be used by conditional permission (FOUO)





# Priorities for Protection

- Sensitive Human Populations
- Environmentally Sensitive Areas
- Critical Infrastructure

# Clinton County Pilot – Statewide Plan

- Met with county planning groups including the local emergency planning committee
- Walked local groups through the process of GRP development
- Presented Sensitive Resource Maps to the group and explained use in GRP development

# Clinton County Pilot – Statewide Plan

- Results from the meeting:
  - Gained local knowledge for use in identifying priority areas for GRPs
  - Selected priority areas for GRP development
  - GRP data collection forms developed based on this meeting for use in developing other GRPs



## RR Mile QC 270 – Canastota, Madison Co.

Location: Town of Lenox, Madison County  
Coverage Area: Village of Canastota  
Railroad Mile Markers: CSX 270.38 to CSX 269.16  
Related SRMs: SRM-202\*

CONTACT ALL NUMBERS BELOW		
Local Fire & Police		911/ (315) 366-2280
National Response Center (EPA)		(800) 424-8802
DEC Spill Response		(800) 457-7362
CSX Railroad		(800) 232-0144
Madison Co. Emergency Mgt.		(315) 366-2789
State Watch Center		(518) 292-2200
Oneida Indian Nation Police		(315) 829-8100

### FIRE/EXPLOSION:

- 1 IDENTIFY PRODUCT(S).
- 2 NOTIFY POTENTIAL RECEPTORS AND RESPONSE CONTACTS.
- 3 REQUEST STATE WATCH CENTER TO MOBILIZE FOAM ASSETS.
- 4 EVALUATE 5 MILE.
- 5 IF MORE THAN 3 CARS ON FIRE, EVACUATE RESPONDERS AND LET IT BURN.
- 6 IF 1 OR FEWER CARS INVOLVED, DOES FIRE THREATEN POPULATIONS OR CRITICAL INFRASTRUCTURE?
- 7 IF SO, FIGHT FIRE USING FOAM AND WATER. ADDITIONAL FOAM FROM STATE WATCH CENTER. UTILIZE HIGH VOLUME DRAFT POINTS IF POSSIBLE.
- 8 IF NOT, LET IT BURN, APPLY COOLING WATER TO ADJACENT CARS VIA UNMANNED MONITORS
- 9 CONSIDER RUNOFF CONTROL MEASURES TO MINIMIZE HEALTH AND ENVIRONMENTAL IMPACTS.

### SPILL/LEAK:

- 1 IDENTIFY PRODUCT(S).
- 2 VAPORS – FLAMMABLE OR TOXIC? APPLY FOAM SUPPRESSION?
- 3 SAFELY REMOVE POTENTIAL IGNITION SOURCES.
- 4 NOTIFY RECEPTOR CONTACTS – 1,000 FEET DOWNWIND. EVACUATE OR SHELTER IN PLACE AS NECESSARY.
- 5 NOTIFY RESPONSE CONTACTS. RAILROAD AND/OR INVOICED MOBILIZE SPILL RESPONSE ASSETS.
- 6 EVALUATE FLOW PATH(S). PREVENT FLOW INTO SEWERS/WATERWAYS WITH BOOM/DIKE/BERM.
- 7 IF SPILL REACHES WATERWAYS, NOTIFY DOWNSTREAM RECEPTORS AND DEPLOY BOOM WHERE POSSIBLE.

### DERAILMENT/ACCIDENT (NO OBVIOUS FIRE OR LEAK)

- 1 IDENTIFY PRODUCT(S).
- 2 NOTIFY RESPONSE CONTACTS.
- 3 REMOVE POTENTIAL IGNITION SOURCES.
- 4 ESTABLISH SECURE PERIMETER.

### GEOGRAPHIC ACCESS

Primary access route: I-90 to exit 34 to Rt-135 (S. Peterboro St).

Alternative access route: From the west, Rt-13/Rt-5 (Seneca Turnpike) to Rt-13N or from the east Rt-5 (Seneca Turnpike) to Rt-13N (S. Peterboro St).

### RAILROAD ACCESS

Northern railroad access: From S. Main St westward, at Railroad St, access is available along an unmaintained stone/dirt access road (Barlow St. runs to the north). Northern access to the tracks is also available eastward off S. Main St via Railroad St.

Southern railroad access: A paved walking trail (3 ft wide) provides access west of S. Main St to mile mark 171.45 and then continues west along an unmaintained path. Access from Rt-13 eastward runs through the Lenox Skate Park, continues to the intersection of Galavotti Pl, and continues eastward along dirt access road.

### NOTIFICATION AND EVACUATION

#### DOWNWIND CONSIDERATIONS

Canastota School System:  
Pat Mitchell: 315-697-8354 / 315-697-2192  
Nick Campbell: 315-697-7493 / 315-697-2194  
Madison County Head Start: 315-697-9833  
Lil Punkskins Daycare:  
Jennifer Hook: 315-697-9240  
Celebration Children's Center: 315-697-8680

#### DOWNSTREAM CONSIDERATIONS

None identified

### ICP / STAGING

Madison County Highway Garage  
139 N. Court St, Wampsville, NY 13163  
Canastota Middle / High School  
101 Roberts St, Canastota, NY 13032  
Joseph Stag Ln Park  
Joseph Stag Ln, Canastota, NY 13032 (43.08N, -75.75W)

### SITE AND SEASONAL CONSIDERATIONS

Canals may be frozen and/or drained during winter months.

### FIRE SUPPRESSION

Local Foam Resources: Minimal Class B foam available locally.  
High Volume Class B Foam Trailer  
West (30 min) - 511 South State Street, Syracuse, NY 13202  
East (35 min) - 552 Bleeker Street, Utica, New York 13510  
Water Drafting: Erie Canal at various location on Canal St and through municipal water hydrants.

### WATER STRATEGIES

Boom: Deploy boom at first downstream location ahead of oil migration.

Canastota Creek: W. Chapel St	(75° 45' 10.0794", 43° 4' 51.6")
Canastota Creek: Lewis St	(75° 45' 11.16", 43° 4' 56.18")
Canastota Creek: Ball Ave	(75° 45' 11.16", 43° 4' 2.7584")
Canastota Creek: Wilson Ave	(75° 45' 9.72", 43° 3' 7.0794")
Canastota Creek: Maple Ave	(75° 45' 10.0794", 43° 4' 10.0394")
Canastota Creek: Joe Stagnin Ln	(75° 45' 21.6", 43° 9' 20.041")
Old Erie Canal: Buck St	(75° 45' 25.56", 43° 4' 45.95")
Old Erie Canal: Main St	(75° 45' 17.28", 43° 4' 45.8384")
Old Erie Canal: Commerce St	(75° 45' 7.92", 43° 4' 45.8384")
Old Erie Canal: Diamond St	(75° 45' 0.36", 43° 4' 45.8384")
Old Erie Canal: West of Clark St on Canal St (N) and Center St at Precision Reel (S)	(75° 44' 51", 43° 4' 45.12")

### BERMING RESOURCES

Canastota DPW: 315-366-2221  
Madison County Highway Garage: 315-366-2221  
Callahan Industries: 315-697-9569  
CCI: 315-697-2547

# Example of back of GRP - Notifications and Actions

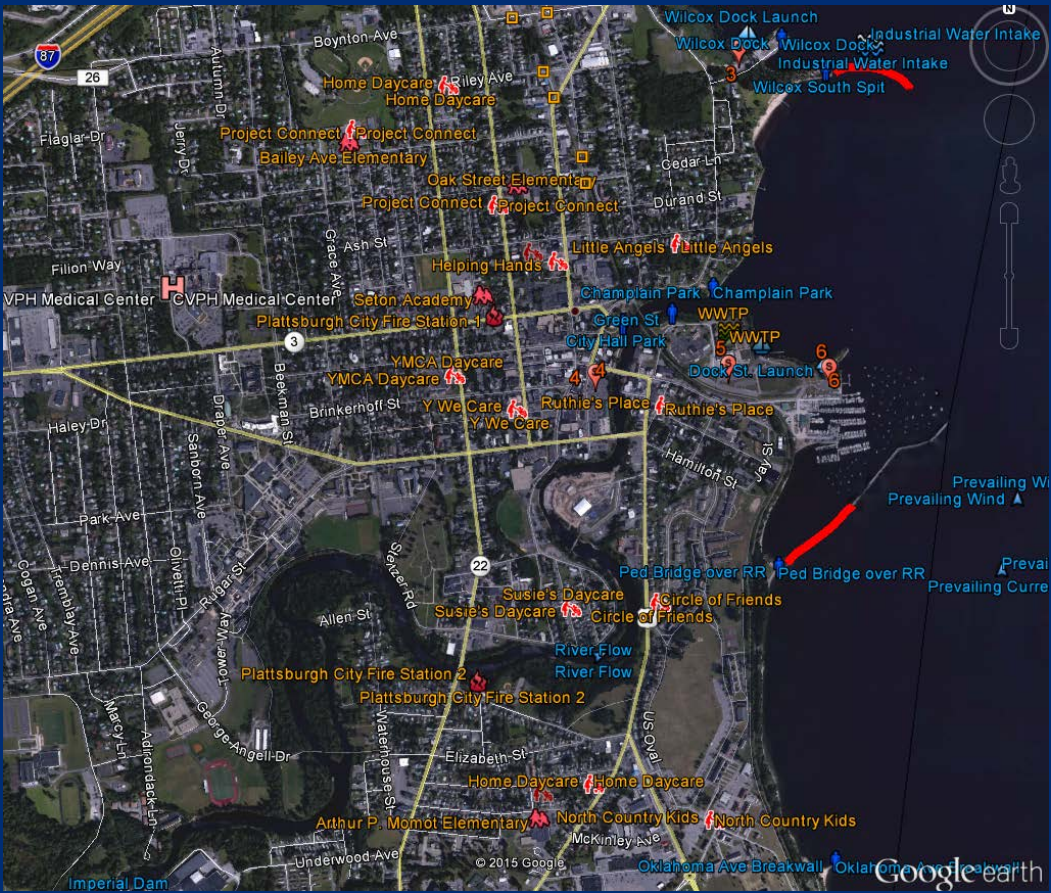
2012 Emergency Response Guidance

1170 1075 1090 1202 1203 1267 1294 1307

Strategic and Tactical Guidance for Rail Incident Guide 01



Department of  
Environmental  
Conservation



# Google Earth

# Pre-existing Response Plans



# NYS Navigation Law - March 28, 2015

- Increase in Fees and Surcharges began September 2015
- Fund Ceiling increase from \$23M to \$40M
- Up to \$2.1M for use to fund:
  - Acquisition and maintenance of petroleum spill prevention, response, or personal safety equipment including those for emergency services agencies and personnel
  - Necessary response drills and exercises
  - Mapping, analysis, and plans, e.g., SRMs & GRPs



# Meetings Underway

- DEC, with OFPC and DOH representatives, has met with County and Local Emergency Management Officials in these counties:
  - Clinton                      Orange
  - Madison                      Ulster
  - Chautauqua                  Erie
  - Wayne
  - Montgomery
  - Greene
  - Essex
  - Washington
  - Saratoga

# Questions



# Thank You

Dennis Farrar

Emergency Response Coordination

NYSDEC

[Dennis.Farrar@dec.ny.gov](mailto:Dennis.Farrar@dec.ny.gov)

518-402-9543 (office)

518-461-4406 (cell)

518-457-7362 (24 hour Spill Hotline)

