



STATE OF NEW JERSEY
DEPARTMENT OF ENVIRONMENTAL PROTECTION

NJDEP EMERGENCY MANAGEMENT

**INITIATIVES, UPDATES, RECENT
INCIDENTS AND STUFF LIKE THAT**

STAFFING

- Bureau of Emergency Response –
- New region supervisor
- Three backfills

New North Region Supervisor

- Patrick DiGangi
 - NJDEP
- Emergency Management
 - 7 Ridgedale Avenue
 - Cedar Knolls, NJ
 - 07927
- He can be reached by cell at 609-309-1741
- Bergen, Hudson, Passaic, Essex, Union, Morris, Somerset, Hunterdon, Warren, Sussex

South Region Supervisor

- James Manuel
 - NJDEP
 - Emergency Management
 - 33 Arctic Parkway, Ewing NJ
- Mail: Mail Code 33-01, PO 410Box Trenton, NJ
- He can be reached by cell at 609-309-1743
- Middlesex, Monmouth, Mercer, Burlington, Ocean, Atlantic, Cape May, Salem, Gloucester, Camden, Cumberland

INITIATIVES

**THINGS WE THINK ABOUT WHEN
WE'RE NOT HANDLING
EMERGENCIES**

EBOLA PREPAREDNESS



CONTINGENCY PLAN UPDATES



AVIAN INFLUENZA

Poultry in NJ

- 5 table egg farms (2.5 million birds)
- 3 Game Bird (180,000 birds)
- 5 Turkey (25,000 birds)
- 38 Live bird markets(22,800birds,600/market)
- 4 municipal waste incinerators approved, 3 willing to accept depopulated birds
- 12 commercial landfills, 2 willing to accept
- 6 animal crematoriums, 2 willing to accept



RECENT INCIDENTS
And STUFF LIKE THAT...



North Brunswick Warehouse Fire

NJTP northbound 0530 hrs



10,000' view

Air monitoring and runoff were the 2 major concerns.
OSC's from EPA Region 2 provided much needed support for the effort

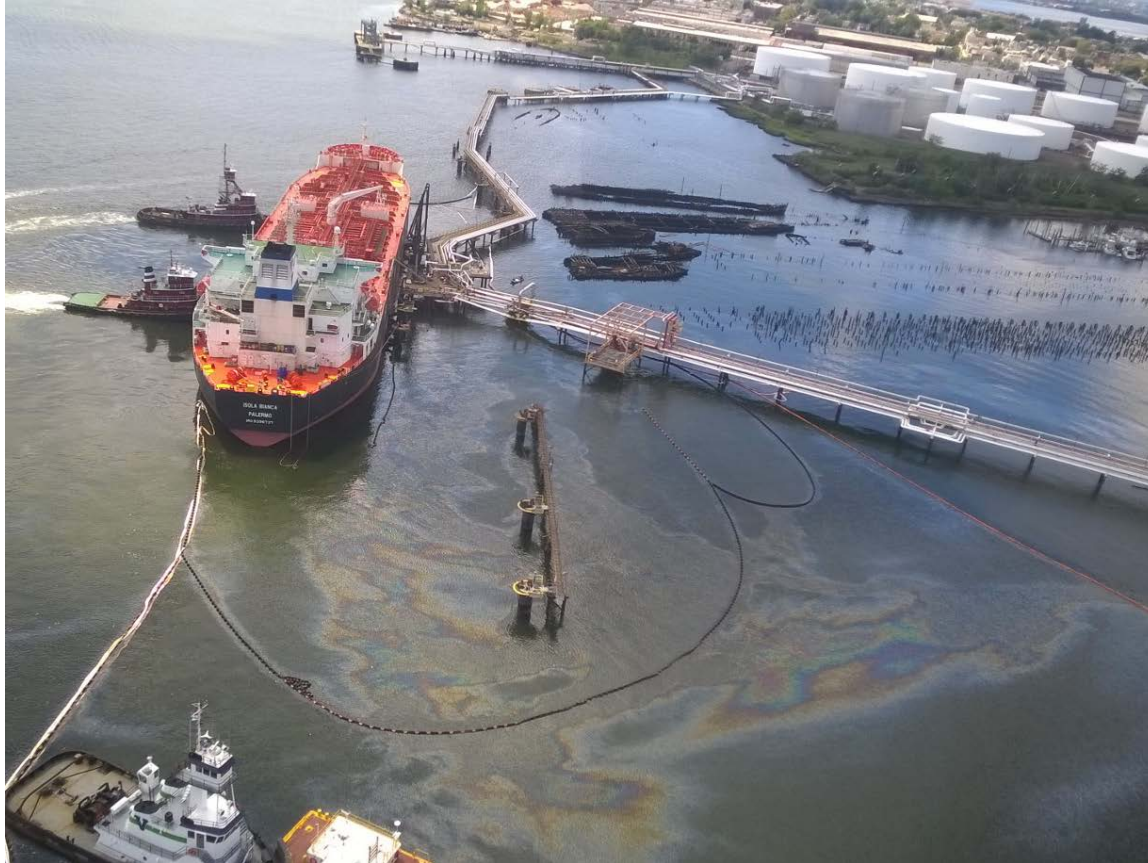


**Hanover Twp overturned gasoline tanker
BER personnel securing dome clamps
prior to hot tapping the tanker**



SAME TANKER

**BER RESPONDERS PUMPING OUT THE RESIDUAL
THROUGH THE DOME**



IMTT BAYONNE BARGE ACCIDENT

**TUG AND BARGE LOST CONTROL OF ONE ENGINE AND STRUCK
THE PIER CAUSING A SPILL FROM THE DOCK PIPING**



**SHOOTERS ISLAND ESA BOOMED
IN ACCORDANCE WITH THE ACP**



FULL UNIFIED COMMAND WAS ESTABLISHED

**PROPER PLANNING RESULTED IN THE EXECUTION OF A TEXTBOOK
RESPONSE WITH FULL COOPERATION OF THE RP, THE USCG AND STATE,
COUNTY AND LOCAL RESOURCES**



**PAPAL VISIT
25 SEPTEMBER**

**POPE FRANCIS VISITED OUR AOR AS WELL AS SEC DEL
BAY**

**ANOTHER EXAMPLE OF PLANNING EFFORTS PAYING DIVIDENDS. THERE
WERE NO UNPLEASANT EVENTS ASSOCIATED WITH THE VISIT OF HIS
EMMINENCE**



**NJTP KEARNY OVERTURNED GASOLINE TANKER
HACKENSACK RIVER WAS AT RISK BUT
THE SPILL WAS LARGELY CONTAINED**



**TANKER CARCASS REMOVED
REMEDIATION IN PROGRESS**



OILY PIT IN NEWARK
JUST CAN'T MAKE THIS STUFF UP!



**A LOOK AT THE INSIDE
ALL'S WELL THAT ENDS WELL**



**NOR EASTER PRECEEDING TS JOAQUIN
BEACH EROSION EXPOSED THE SHEET PILING
THAT WAS INSTALLED TO STABILIZE THE DUNES**



**KINDA MAKES BEACH ACCESS A LITTLE DIFFICULT
LADDERS WERE NECESSARY TO
ALLOW FOR EMERGENCY EGRESS**



**NJDEP WAS TASKED WITH INSTALLING A FENCE TO
RESTRICT ACCESS FOR PUBLIC SAFETY**

**3.5 MILES OF BEACHFRONT IN BRICK TWP AND
MANTOLOKING WERE FENCED**



**THE SAME STORM RIPPED A HOUSE OFF OF ITS PIERS
AND IT FLOATED ACROSS THE ICW IN GRASSY SOUND
THE STRUCTURE HAD PREVIOUSLY BEEN DANMAGED BY
SANDY**



**A NEARBY RESIDENT WAS QUITE SURPRISED TO SEE HIS
NEIGHBORS HOUSE GO DRIFTING BY
HIS AMUSEMENT WAS SHORT LIVED HOWEVER AS IT
STRUCK HIS BOAT AND DOCK AS IT PASSED**



NJ Transit Leaking Propane Tank in Wood-Ridge Yard



Successful outcome

NJDEP

EMERGENCY MANAGEMENT

CONTACT INFORMATION

24 HR HOTLINE# 1-877 WARNDP (877 -927-6337)

EMERGENCY MANAGEMENT PROGRAM 609-633-2168

ASSISTANT DIRECTOR PEARSON CELL# 201-697-6794

REGION SUPERVISOR DIGANGI CELL# 609-309-1741

ANY QUESTIONS

