



# Sector NY IMD

## 2019 Pollution Response Year in Review & GIS Data Project

LCDR Ryan Clark  
Chief, Incident Management Division



984

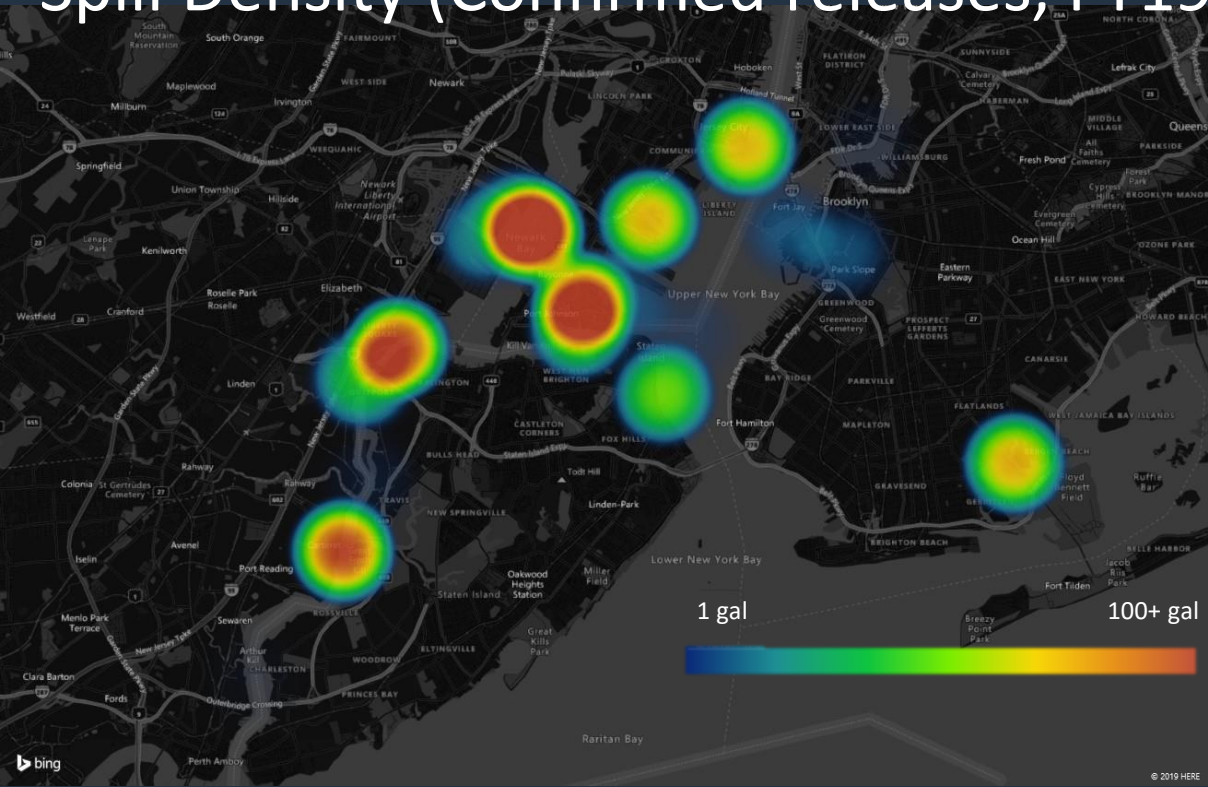
**NRC Reports  
Received**



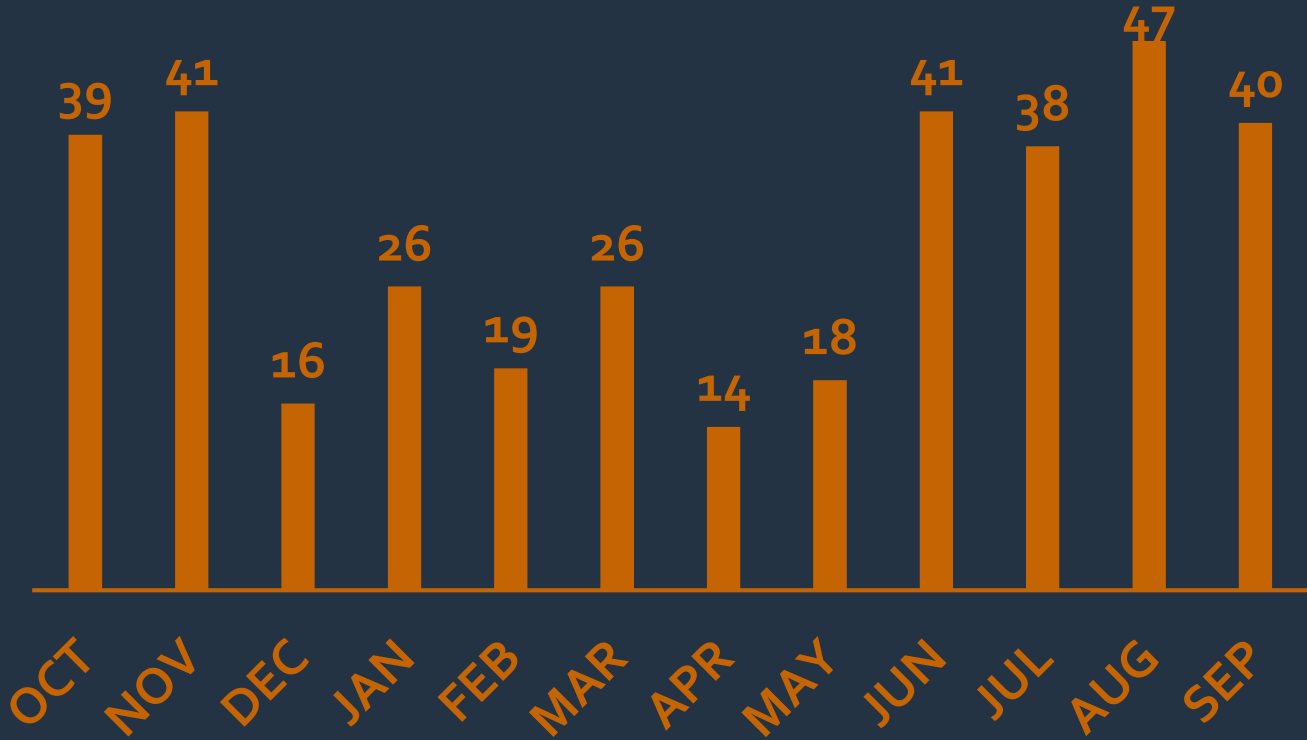
365

**Pollution  
Investigations**

# Spill Density (Confirmed releases, FY19)



## Investigations Per Month





30+  
New ICS  
Qualifications

5



PR

4



FOSCR

New Pollution  
Qualifications



20+  
Community &  
Industry  
Outreach  
Events

# Background

- USCG personnel often lack local knowledge and institutional memory of operations
- **Responders** on scene lack access to historical case information in real time.
- **Planners** lack easy-to-access data to aid informed decision making.

# Geographic Information Systems

“A **geographic information system (GIS)** is a computer **system** for capturing, storing, checking, and displaying data related to positions on Earth's surface. By relating seemingly unrelated data, **GIS** can help individuals and organizations better understand spatial patterns and relationships.”

- National Geographic



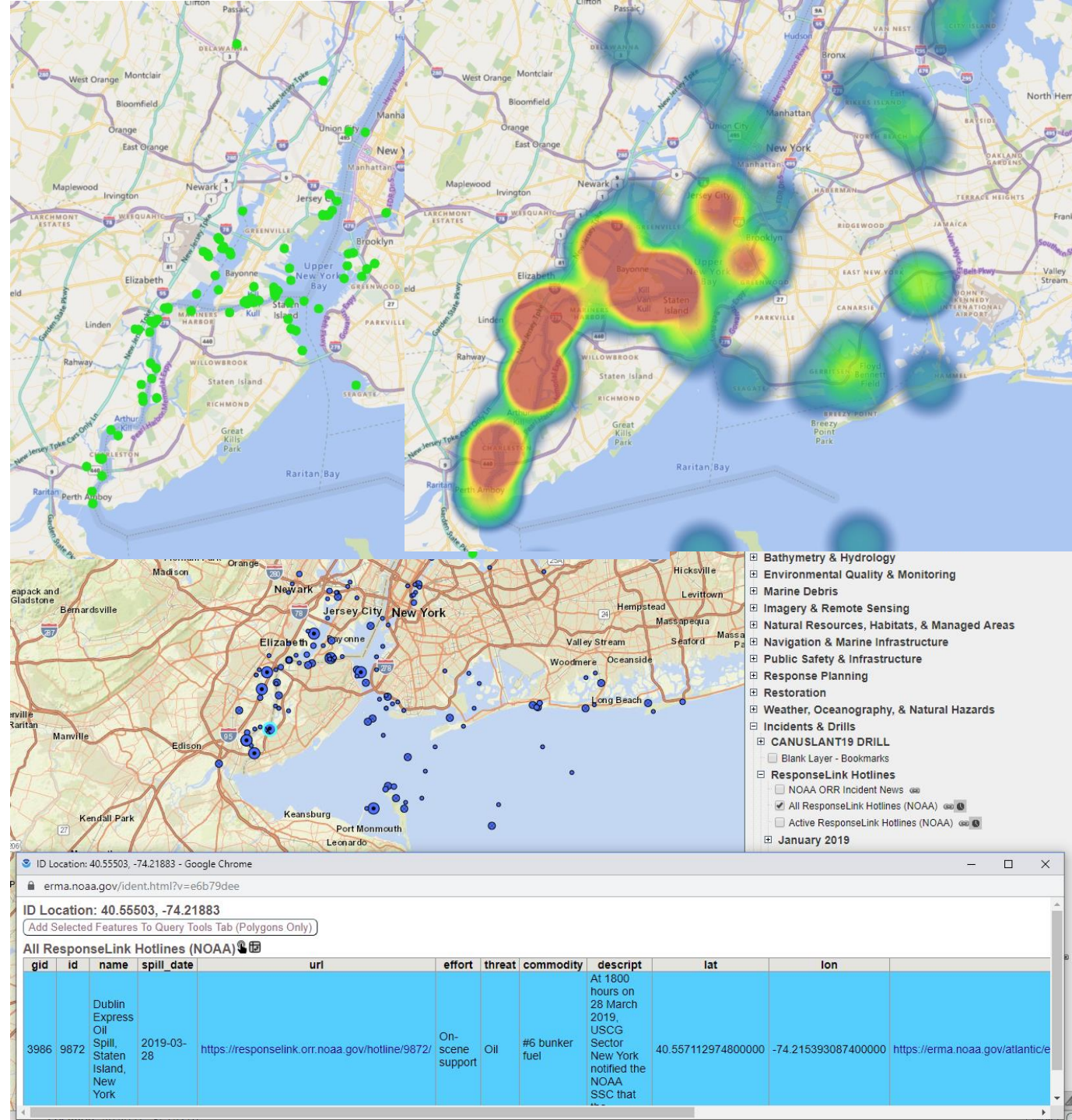
# Ground Work

- SEC NY IMD Team members recorded GPS locations of every spill & reported spill along with other essential data.
- Data scrubbed for accuracy, consistency, and formatting.
- Data entered and manipulated in Microsoft excel.
- Submitted to NOAA for publication to ERMA.



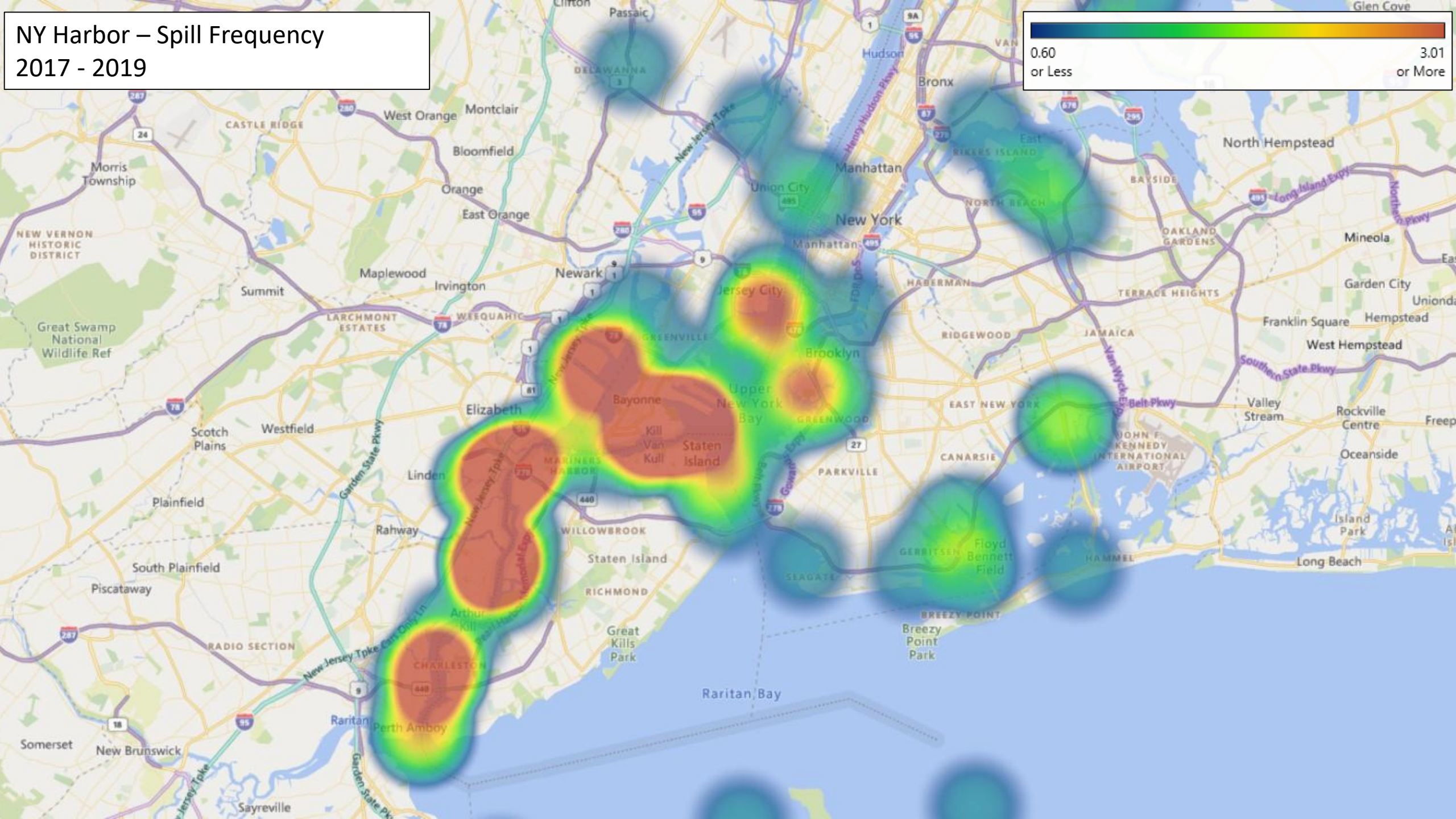
# Deliverables

- Decision Aid Heat Maps
- ERMA Layers
  - Case Map
  - Derelict Log
  - Facilities Map
- Products used to plan:
  - GIUEs
  - Exercises
  - Routine Harbor Patrols.
- USCG White Paper



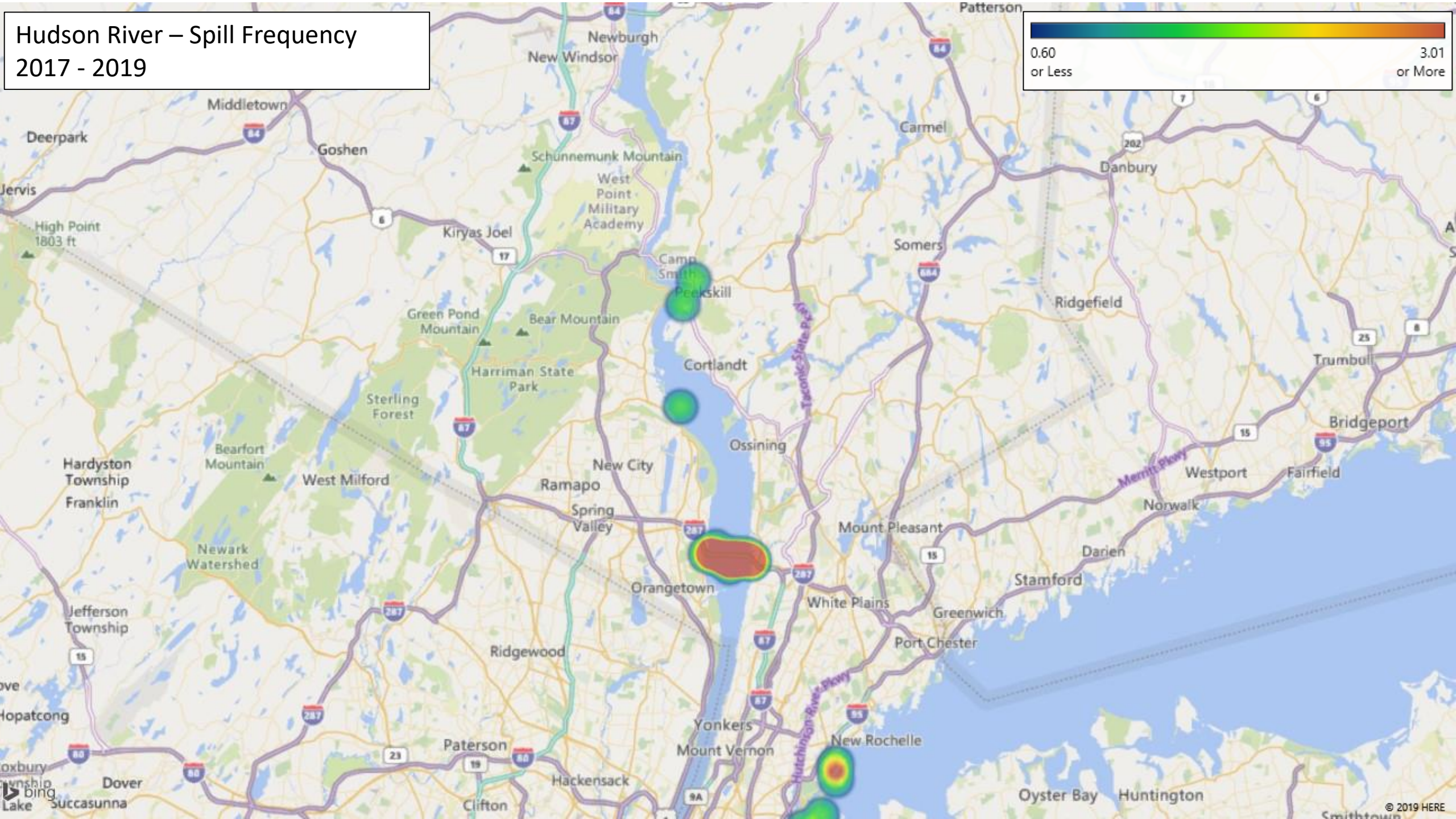


# NY Harbor – Spill Frequency 2017 - 2019



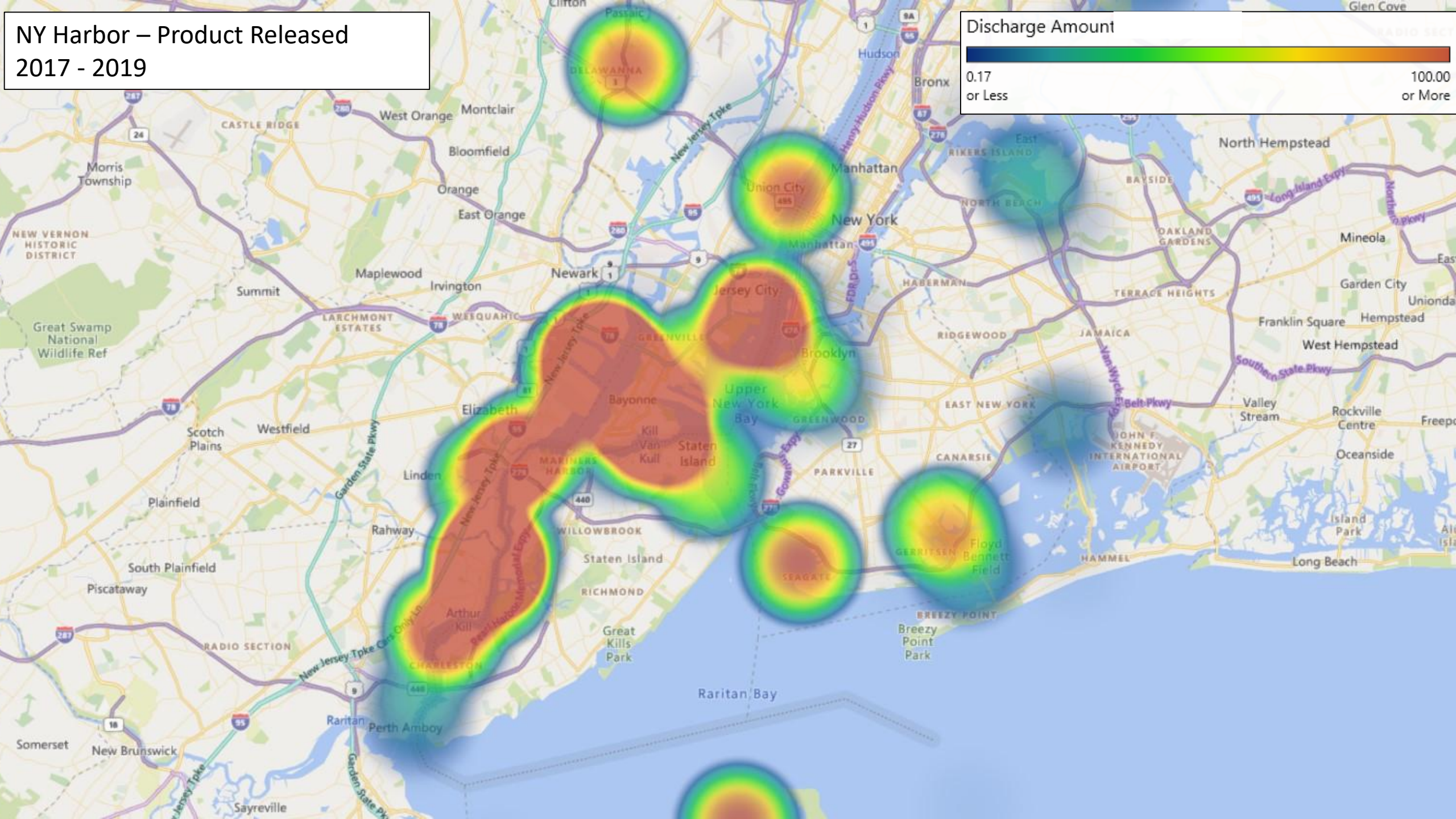


# Hudson River – Spill Frequency 2017 - 2019



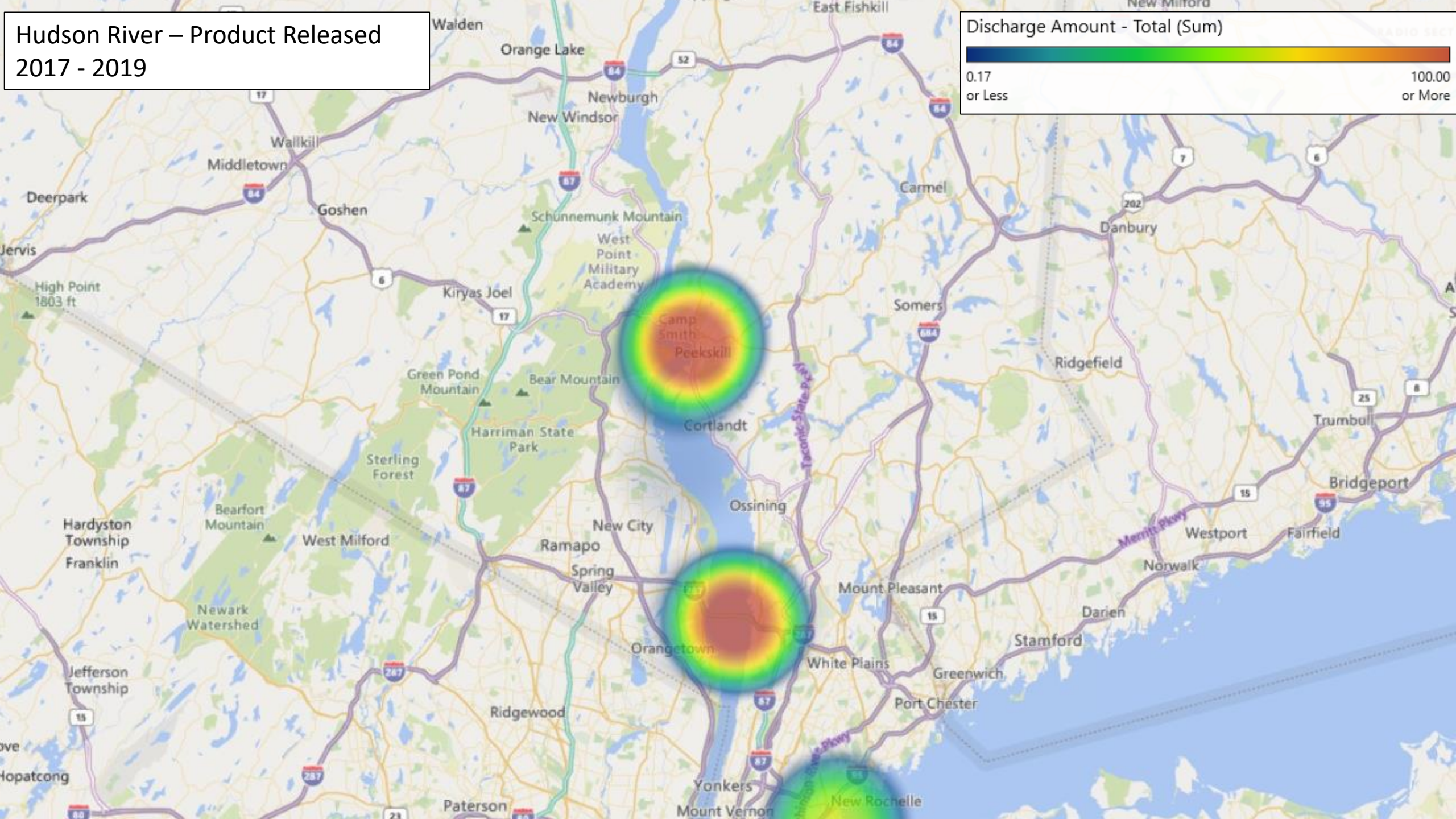
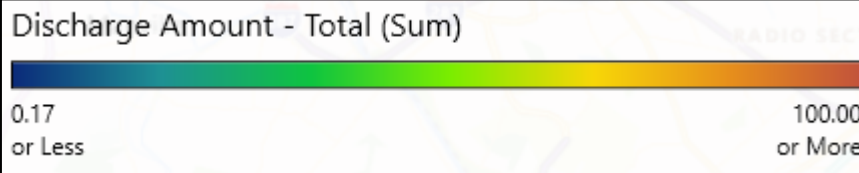


# NY Harbor – Product Released 2017 - 2019

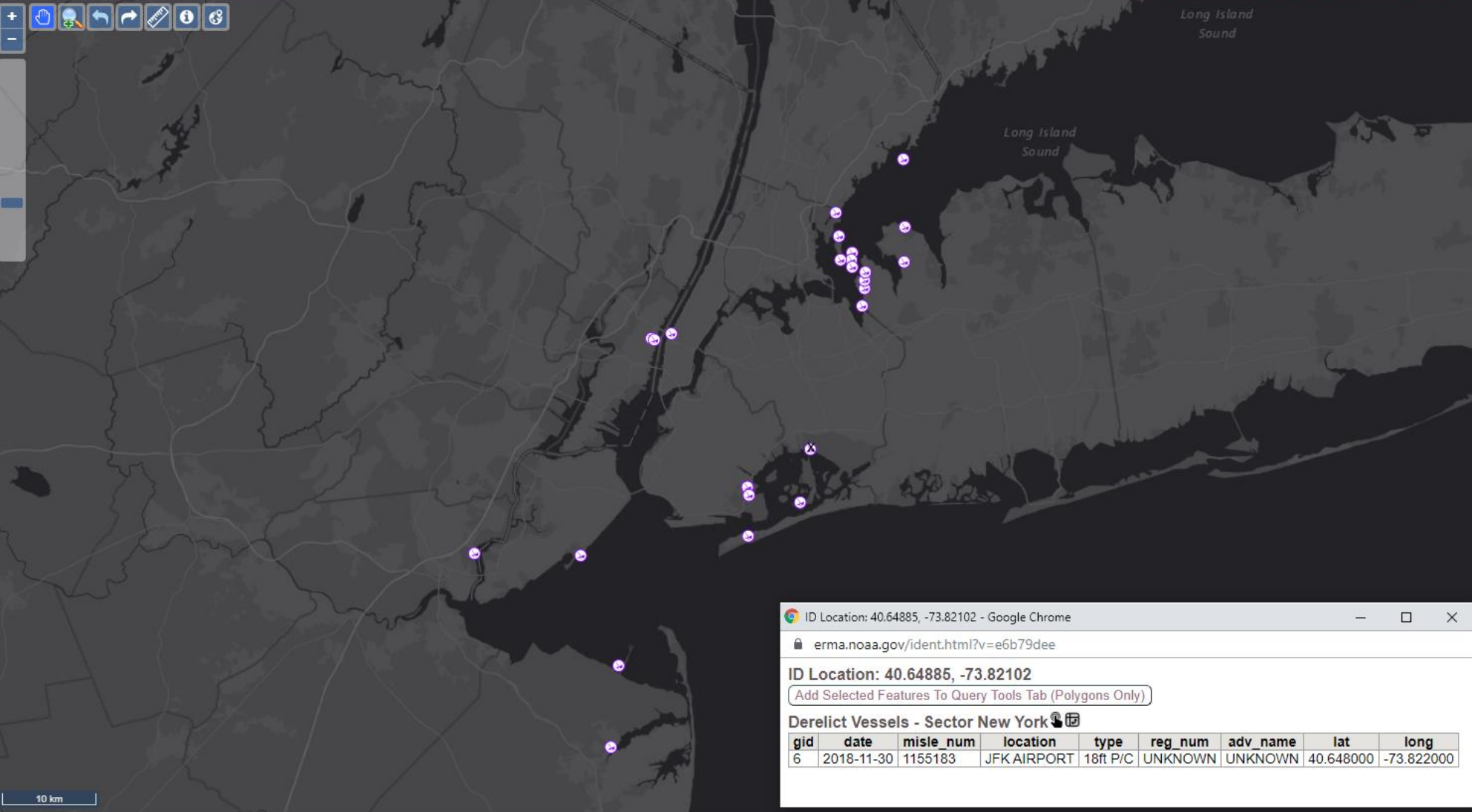




# Hudson River – Product Released 2017 - 2019







Layers Legend Draw Query Tools Zoom Download Print

clear all collapse all

- [-] Background Layers
  - Esri Street Maps
  - Esri World Imagery
  - Esri Ocean
  - Esri National Geographic
  - Esri World Topo
  - Esri Light Gray Canvas
  - Esri Dark Gray Canvas
  - MapBox Hybrid Imagery
  - OpenStreetMap
  - OpenStreetMap (NOAA Local)
  - OpenStreetMap Light Gray (CARTO)
  - Blank Base Layer
- [-] St. Simons Sound Incident
- [-] Admin Boundaries & Reference Features
- [-] Bathymetry & Hydrology
- [-] Environmental Quality & Monitoring
- [-] Marine Debris
  - Marine Debris Tracker Points (2019-11-20)
  - National Marine Debris Projects (NOAA)
  - Supplemental Hurricane Sites (FY18)
- [-] Abandoned or Derelict Vessels
  - [-] Florida
  - [-] South Carolina
  - [-] New York
    - Derelict Vessels - Sector New York
- [-] Natural Hazards
- [-] Imagery & Remote Sensing
- [-] Natural Resources, Habitats, & Managed Areas
- [-] Navigation & Marine Infrastructure
- [-] Public Safety & Infrastructure
- [-] Response Planning
- [-] Restoration
- [-] Weather, Oceanography, & Natural Hazards
- [-] Incidents & Drills
- [-] ERMA Drawings
- [-] My Map Data

Bookmark Views:

ID Location: 40.64885, -73.82102 - Google Chrome

erma.noaa.gov/ident.html?v=e6b79dee

ID Location: 40.64885, -73.82102

Derelict Vessels - Sector New York

gid	date	misle_num	location	type	reg_num	adv_name	lat	long
6	2018-11-30	1155183	JFK AIRPORT	18ft P/C	UNKNOWN	UNKNOWN	40.648000	-73.822000

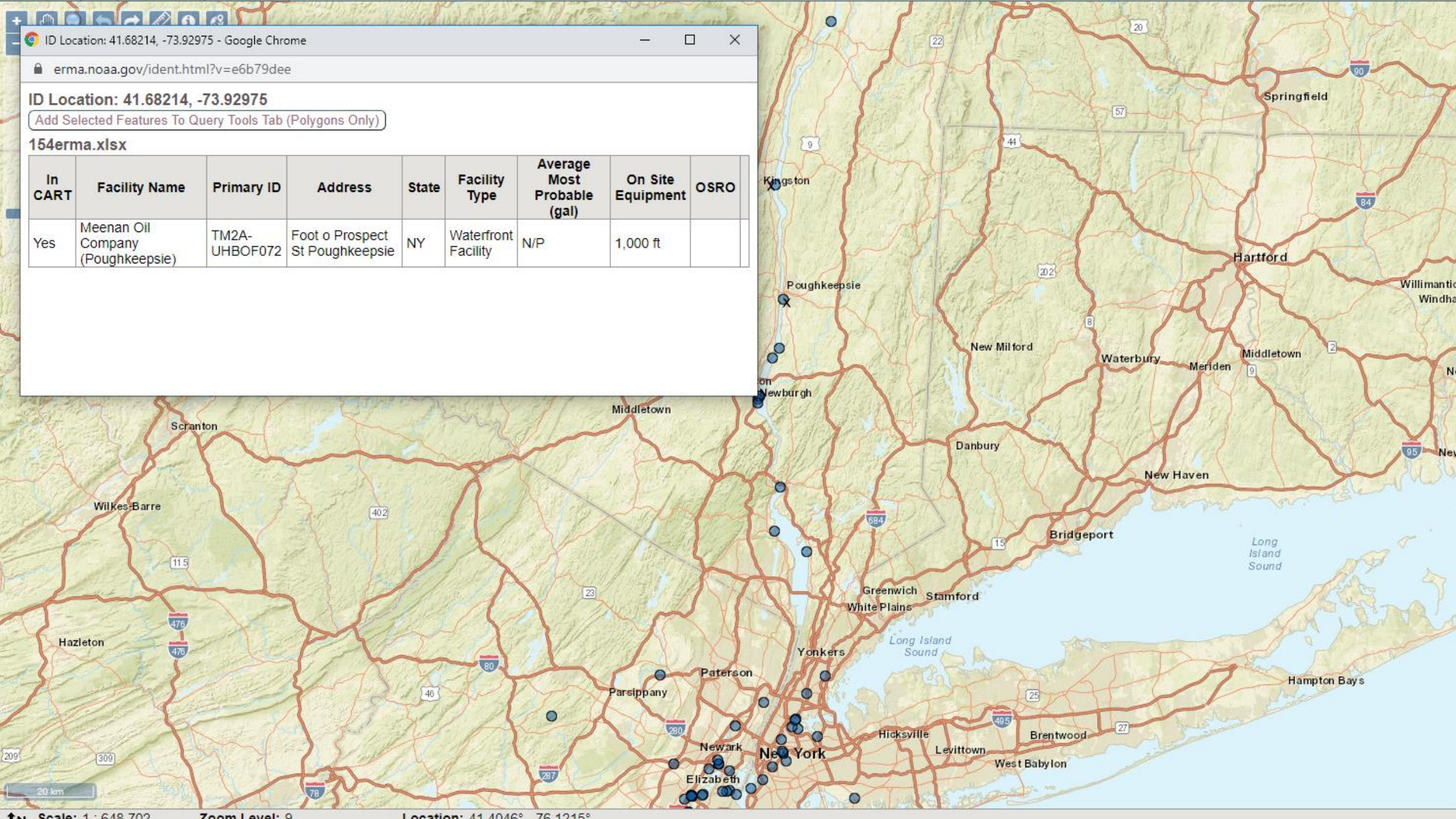


ID Location: 41.68214, -73.92975

Add Selected Features To Query Tools Tab (Polygons Only)

154erma.xlsx

In CART	Facility Name	Primary ID	Address	State	Facility Type	Average Most Probable (gal)	On Site Equipment	OSRO
Yes	Meenan Oil Company (Poughkeepsie)	TM2A-UHBOF072	Foot o Prospect St Poughkeepsie	NY	Waterfront Facility	N/P	1,000 ft	





# What can you do?

- Catalogue and publish your data.
- Create your own EMRA Layers.