

Digital ACP Update 2007



By Richard Knudsen
Florida Fish & Wildlife Conservation Commission
Fish and Wildlife Research Institute
Center for Spatial Analysis
St. Petersburg, Florida

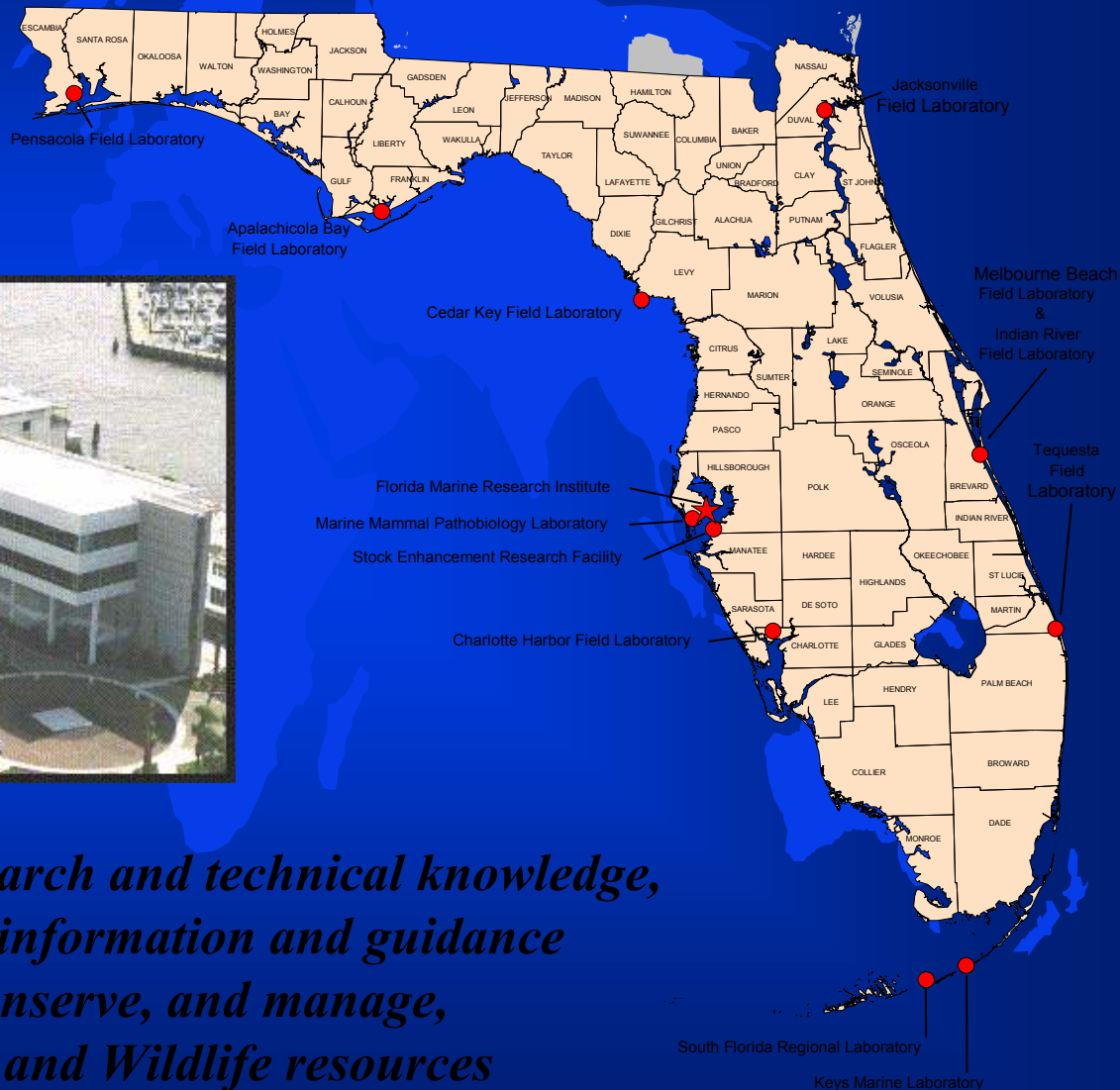
Introduction

- ◆ Who We Are and What We Do
- ◆ Digital ACP Background
- ◆ Statewide Environmental Sensitivity Index (ESI) mapping and data
- ◆ Digital Area Contingency Plans (ACP) Updates for USCG D7
- ◆ Future spill support work in Florida

The Florida Fish and Wildlife Conservation Commission

Fish and Wildlife Research Institute (FWRI)

Center for Spatial Analysis



*Through effective research and technical knowledge,
we provide timely information and guidance
to protect, conserve, and manage,
Florida's Fish and Wildlife resources*

Marine Resources GIS (MRGIS)

Currently 1000+ Layers w/ Metadata in Oracle/SDE

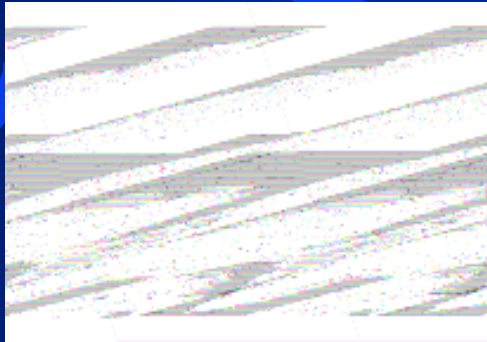


Marine Resources GIS (MRGIS)

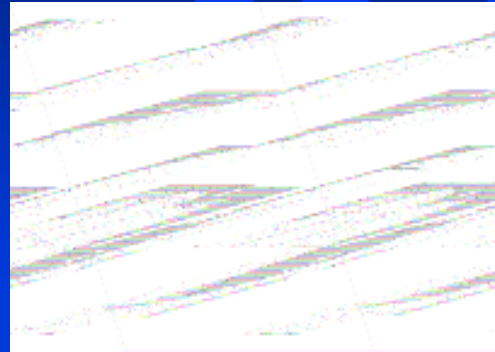
Currently 1000+ Layers w/ Metadata in Oracle/SDE

- ◆ FWC's Enterprise GIS
- ◆ Most FWRI Map Services now connected
- ◆ One central location for updates
- ◆ Faster
- ◆ Raster – Statewide DOQQs, NOAA
Nautical charts – General, Coastal,
Approach, and Harbor scales – Tiled- now
on new imagery server

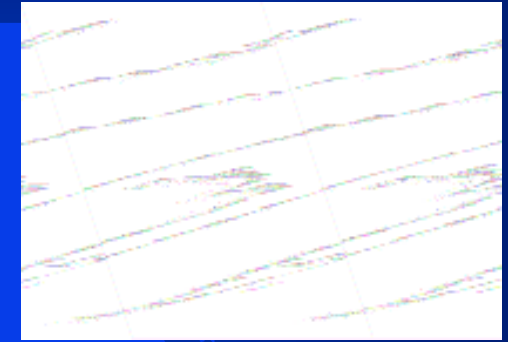
Marine Resources GIS (Raster Examples)



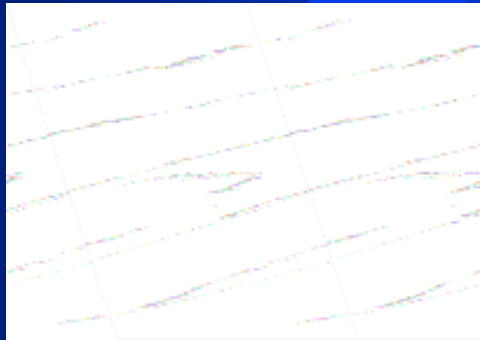
Nautical
Overview



Nautical
General



Nautical
Coastal



Nautical
Approach



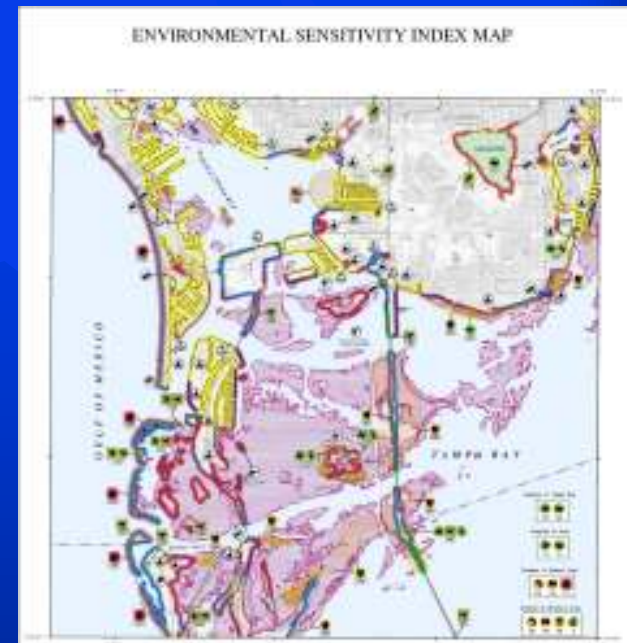
Nautical
Harbor



2004
DOQQs

Statewide Environmental Sensitivity Index Mapping

- ◆ Classification of shoreline sensitivity to spilled oil
- ◆ Statewide mapping (1:24k) of coastal Florida's biological, natural, and socio-economic resources
- ◆ Creation of six hard-copy atlases covering Florida's marine coastline & the St Johns River
- ◆ Creation of CD-ROMs with PDF versions of the atlases
- ◆ Creation of ESI GIS for integration into the "Oilspill Application"



Statewide Environmental Sensitivity Index Mapping Data Products



All ESI Atlases and Maps are available online:
<http://ocean.floridamarine.org/esimaps/>



Statewide ESI Atlases
and Maps CD (PDF)



Statewide ESI GIS Data Viewer CD w/
ArcView 3.x and ArcGIS 9.1 projects
set up with proper tables and relates
to query the data



USCG Digital ACPs - Background

- ◆ **Initially this was the simple conversion of the paper document to a (PDF) format on CD**
 - User friendly
 - Hyper-linked internally & externally
 - Platform and operating system independent

- ◆ **Today this is a far more complex animal**
 - GIS-enabled with ArcGIS, ArcReader, and data
 - Includes related supporting documents and applications
 - Addition of an Internet Map Server
 - Easily updated as newer data becomes available

USCG Area Contingency Plans

“Preparation Equals Performance”

Who are the spill responders?

Who does what during a spill?

Where is the equipment?

What is the plan of attack?

4” Thick Big Binders Filled
With Documents And Maps!

Not Exactly “User Friendly”....

ACPs - The Old Way



ACPs - The New Way



USCG Digital Area Contingency Plans



Tampa



Miami



Jacksonville



Panhandle



Charleston, SC



Savannah, GA

Planning for Oil Spill and Hazmat Response

Oil Spill Software

GIS Software

On the CD...

Area Contingency Plan Document

Area Response Plan Maps

Incident Command System (ICS)

Incident Management Handbook (IMH)

ICS Forms

Tidal Inlet Protection Strategies (TIPS)

Regional Port Information

Environmental Sensitivity Index Maps

GIS Data

Web Links

Over 650 MB!

ESI Maps

Aerial Photos

Coast Pilot Info

The ACP Document

C:\JAXACP\PDF\ACP\Sector Jax ACP Final 05_28_06\USCG-Sector-JAX-Area-Contingency-Plan.pdf - Micr...

File Edit Go To Favorites Help

Back Search Favorites

Address C:\JAXACP\PDF\ACP\Sector Jax ACP Final 05_28_06\USCG-Sector-JAX-Area-Contingency-Plan.pdf Go Links

Save a Copy Search Select 36% Sign

Options x

Bookmarks

- JAX ACP HOME
- Cover Page
- Letter of Promulgation
- Record of Changes
- Table of Contents
- 1000 - Introduction
- 2000 - Unified Command
- 3000 - Operations
- 4000 - Planning
- 5000 - Logistics
- 6000 - Finance and Adminis...
- 7000 - HazMat
- 8000 - Marine Fire Fighting
- 9000 - Appendices
 - 9100 - Notifications
 - 9200 - Personnel Service
 - 9300 - Incidents
 - 9400 - Area Planning Doc
 - 9500 - List of Agreements

Pages

Attachments

Comments

AREA CONTINGENCY PLAN
for
NORTHEAST and
EASTERN CENTRAL
FLORIDA

Developed by the
Northeast and Eastern Central Florida
Area Planning Committee
August 2006 Revision

MSO

1 of 608

Unknown Zone

ACP Document Appendices

[Appendix 9100 Emergency Notifications](#)

[Tab 9110 Required Emergency Notifications](#)

[Tab 9120 Federal On-Scene Coordinators Notifications](#)

[Tab 9130 Federal Agency Points of Contact](#)

[Tab 9140 State Agencies Points of Contact](#)

[Tab 9150 Local Agencies Points of Contact](#)

[Tab 9160 Other Points of Contact/OSROs](#)

[Tab 9170 Recommended Oil Spill Report Form \(Word\)](#)

[Appendix 9200 Personnel and Services Directory \(Word\)](#)

[Appendix 9300 Incident Response/ Incident Action Plan \(PDF\)](#)

Tab 9310 Oil Contingencies (see appendix 9300)

Tab 9320 Hazardous Materials Contingencies (see appendix 9300)

Tab 9330 Marine Fire Contingencies (see appendix 9300)

Tab 9340 Marine Salvage Contingencies (see appendix 9300)

Tab 9350 Weapons of Mass Destruction Contingencies (see appendix 9300)

[Appendix 9400 Area Planning Documentation \(PDF\)](#)

Tab 9410 Spill / Release History (see appendix 9400)

Tab 9420 Planning Factors and Assumptions(see appendix 9400)

Tab 9430 Area Risk Assessments (see appendix 9400)

Tab 9440 Planning Scenarios (see appendix 9400)

[Appendix 9500 List of Agreements \(Word\)](#)

[Tab 9510 EPA / USCG Memorandum of Agreement \(PDF\)](#)

[Appendix 9600 Conversions \(PDF\)](#)

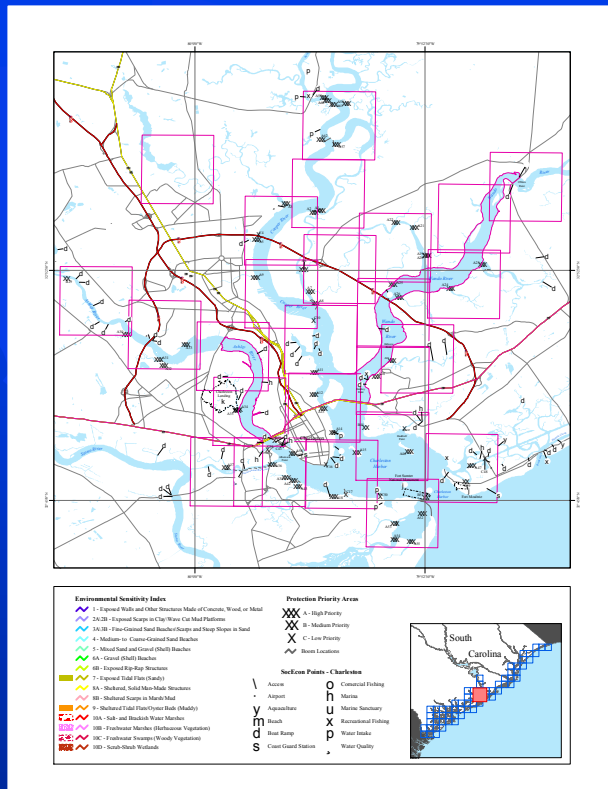
[Appendix 9700 Response References \(PDF\)](#)

[Tab 9710 Response Strategies & Sensitive Area Maps](#)

[Tab 9712 NOAA Environmental Sensitivity Index Maps](#)

Tab Technical References (see Appendix 9700)

Area Contingency Plan Geographic Response Plan Maps and ESI



A40 Ft. Desoto: Mullet Key **MAP # 5**

LATITUDE: 27.631944 **LONGITUDE:** -82.720333 **MSO:** Tampa

CONTACT: Pinellas Co. St. Aquatic Preserve; manager: 815-744-6100, Pinellas Parks Dept. (R. DeSoto); Office: 815-885-2486, FG & FWFC; Non-game biologist: 813-448-3203, Audubon; Rich Paul: 815-425-6826.

PHYSICAL DESCRIPTION:

HABITAT TO BE PROTECTED:
Extensive mangrove, SCA flats, sea grass (r-10)

WILDLIFE RESOURCES TO BE PROTECTED:
Audubon sanctuary, sea grass restoration area, shell fish, shore bird, wading bird, migratory resting area, sea turtles

THREATENED SPECIES:
northern, sea turtle nesting (Belt - August), roseate, (sp-rug) shore birds

OTHER RESOURCES:

COLLECTION POINTS:
South side of island and southwest side, skyway (Audubon) Memorial park

PROTECTION STRATEGY:
To the south, Mullet Key is not ecologically significant, but to the north it is bordered by shellfish and sea grass. Area inside key (north) requires complete isolation. Area to south is accessible by boat (depth: 7 feet and above). 2000 feet of sea

MIN. BOOM LENGTH: **BOOMING METHOD:**

AREA ACCESS:

STAGING AREA:
Many staging areas located in this location - possible areas include: Sunshine Skyway Causeway, southern tip of Mullet Key and Tierra Verde Marina, Ft. Desoto park boat ramp @ Boca de pass, Pinellas Point boat ramp

OTHER RESPONSE RESOURCES:
See Appendix I to Annex F

NEAREST AVAILABLE RESOURCES:

Score	Type	Length	Point of Contact	Phone
				Ph. 4
				Ph. 4
				Ph. 4

OTHER RESOURCES AVAILABLE:

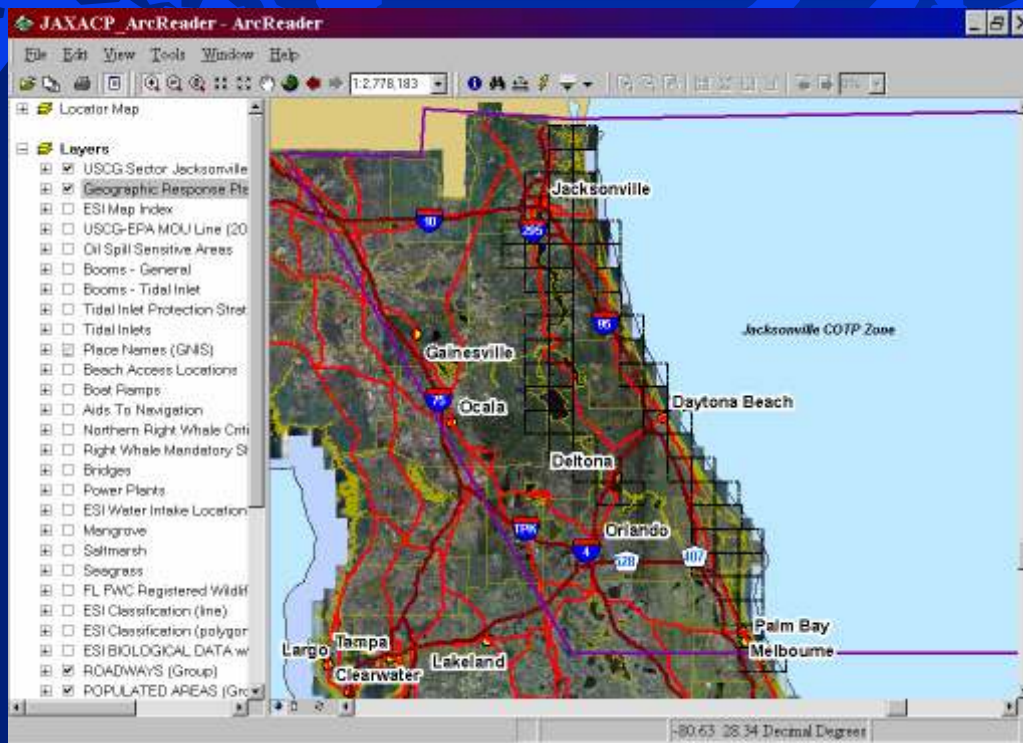
NEW
Geographic
Response Plan
Maps

NEW
Sensitive Areas
Database and
Reports

**All of the cartography is done in ArcGIS with MapLogic
Database and Reports in Access**

Applications (GIS)

Available For All Levels Of Experience and Budget



ArcGIS For The Higher Level User - Highly Customized

ArcReader For Most Users - Free Data Viewer Available On The CD

Many Layers Of ACP And Natural Resources Data Plus Nautical Charts

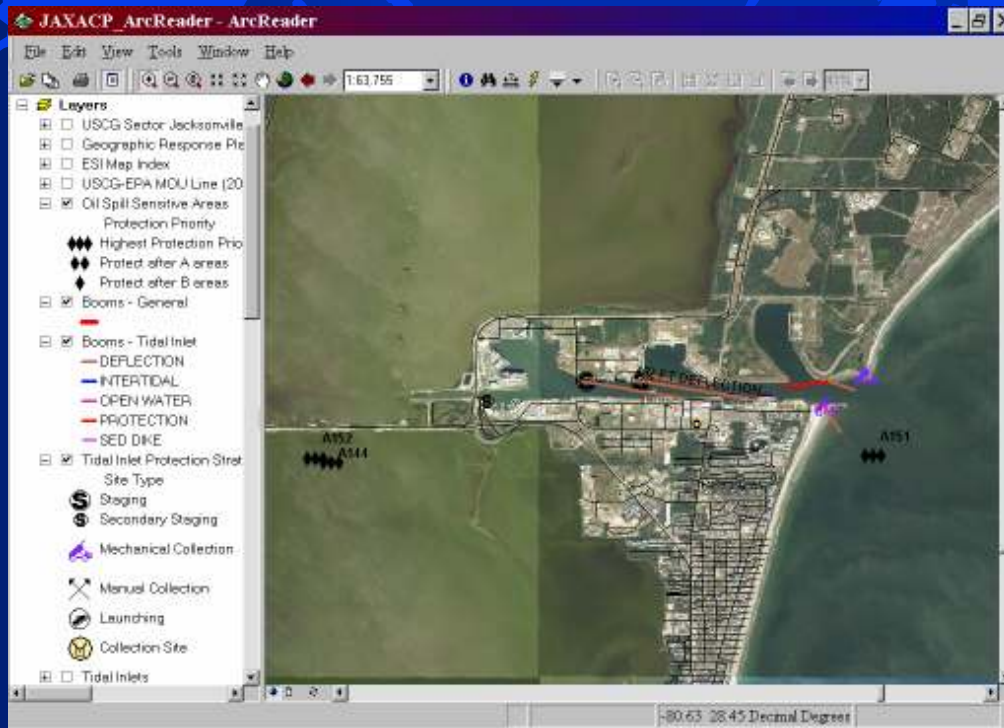
Data Sources: Local AND Internet!

Applications (GIS)

ArcGIS and ArcReader Projects

Examples Of Some Of The Data:

- Response and Staging Areas
- Booming Strategies
- ESI Shoreline
- Mangroves
- Saltmarsh
- Aquatic Preserves
- Response Contractor Locations
- Tidal Inlet Protection Strategies
- Administrative Boundaries
- Aids To Navigation
- Water Intake Locations
- Turtle Nesting Beaches
- Bathymetry
- Population Density
- Major Roads



The Majority Of The GIS Data Was Digitized or Synthesized At FWRI

Applications (Other)

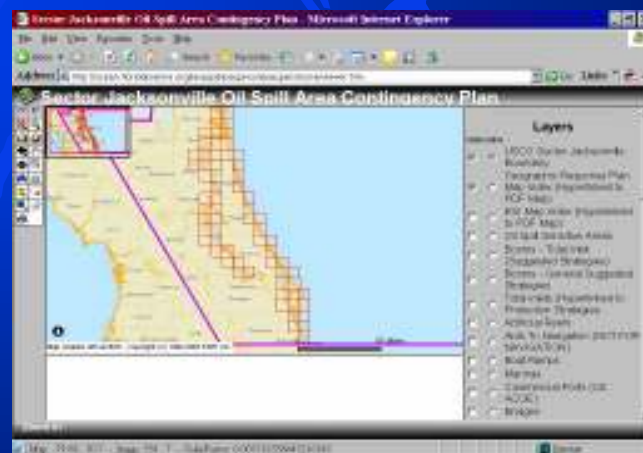
Oil Spill And HAZMAT Specific Applications Produced By The NOAA Office Of Response And Restoration And The EPA



All Available For Installation From The CD

Tampa Bay and Jacksonville ACPs Includes GNOME (General NOAA Oil Modeling Environment)

ACP Internet Map Services



Now Serving Tampa, South Florida, and Jacksonville

All of the GIS data and documents from the CD can be viewed free of charge on the Internet

www.ocean.floridamarine.org/acp

Area Contingency Plans in Google Earth

Key ACP Data Layers Produced as Google Earth Files Available on CD and Website

Northeast and Eastern Central Florida Area Contingency Plan - Microsoft Internet Explorer

Address: file:///C:/Users/.../Google Earth Files.html

Google Earth Files

Many of the GIS data layers for the Area Contingency Plan have been converted to Google Earth files for easy viewing within the free Google Earth viewer. Google Earth requires an Internet connection.

In order to view these files you must have Google Earth installed on the computer you are viewing this CD with. If you do not have Google Earth, you can download it from the [Google Earth web site](#). Google Earth requires an Internet connection, so if you do not have one, you will not be able to view these files. If you do and Google Earth is installed on your computer, you can simply click on the highlighted links below and choose "open" when you are prompted.

Bathymetry (Line)	Sector-Jacksonville-Bathymetry-Line.kmz
Beach Access (revised 2006)	Sector-Jacksonville-Beach-Access.kmz
Boat Ramps (revised 2006)	Sector-Jacksonville-Boat-Ramps.kmz
General Suggested Protective Cell Boundaries	Sector-Jacksonville-General-Cell-Boundaries.kmz



Wildlife Rehabbers

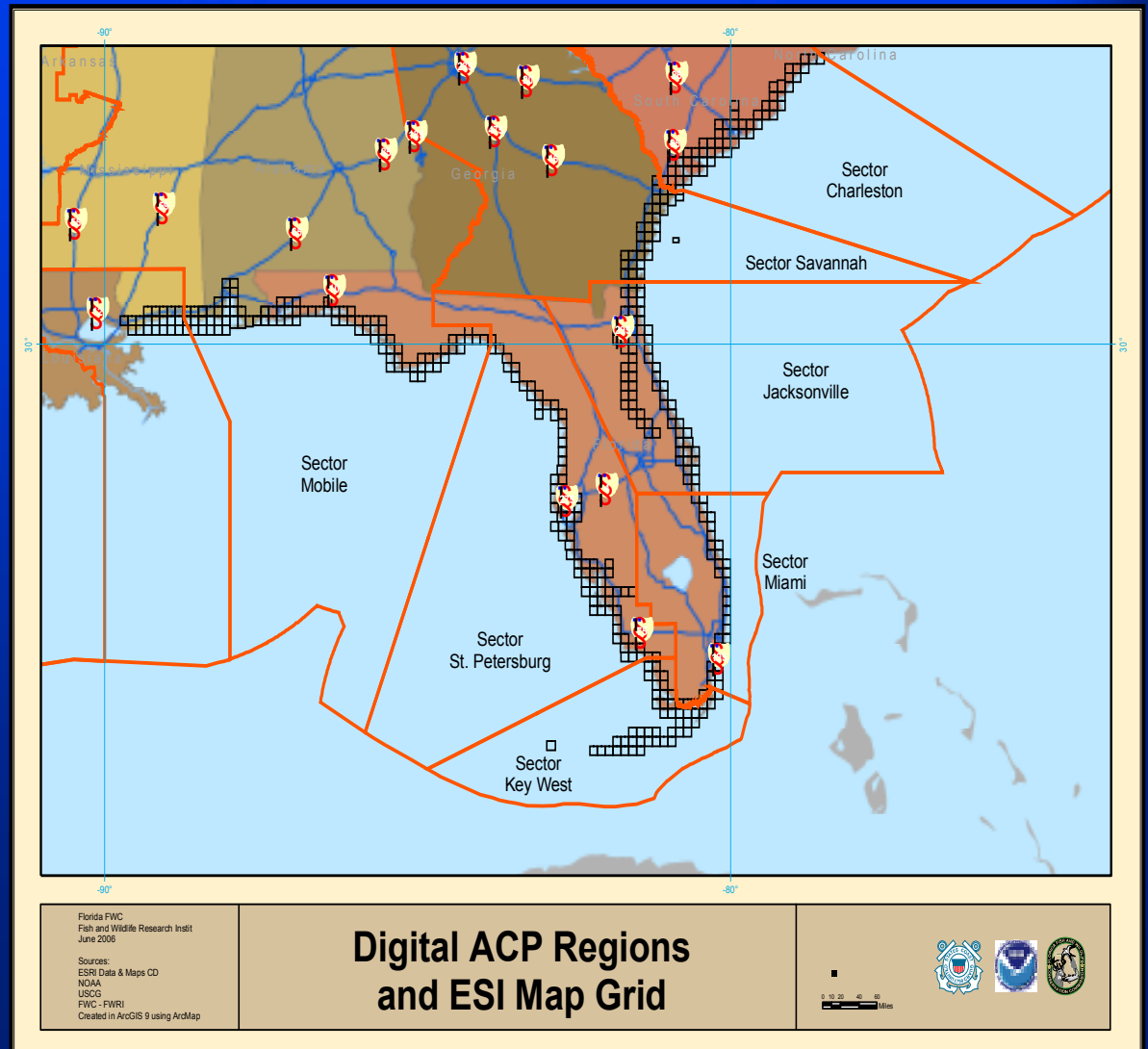


Boat Ramps - 2006

Digital ACP Update Status

February 2007

- ◆ **St Petersburg ACP**
 - Document Updated
 - GIS Data - Updating
 - CD-ROM & IMS - In Redesign
- ◆ **South Florida ACP**
 - Miami and Key West Documents Currently being Updated
- ◆ **Jacksonville ACP**
 - CD-ROM, Website, and IMS Complete.
 - Minor Revisions.
- ◆ **Panhandle ACP**
 - Currently in initial planning stages w/ D8
- ◆ **Charleston, SC ACP**
 - CD Complete
 - In Web Development:
- ◆ **Savannah, GA ACP**
 - CD Complete
 - In Web Development:



Scientific Support for Oil and Hazardous Material Spills in Florida

- ◆ State Scientific Support Coordinator (SSC) for oil spills is located at FWRI.
- ◆ FWRI maintains an MOU with and funding from FDEP regarding spill support (CPTF).
- ◆ The Florida Marine Spill Analysis System is written into this MOU.
- ◆ FWRI support has extended to USCG and NOAA.
- ◆ Technical aspects of statewide spill support are my responsibility.

Florida Department of Environmental Protection Bureau of Emergency Response Support

- ◆ MRGIS On-Scene and Remote Mapping and Analysis Support
- ◆ Targeted Data Layer Development
- ◆ Distributed Mapping, Analysis, Equipment and Support
- ◆ Annual FMSAS Training for BER staff
- ◆ Annual FMSAS Updates
- ◆ Response Drill Participation
- ◆ FMSAS Configuration on New Computers (Rugged Tablet PCs)

USCG Cooperation

- Extensive cooperation with Coast Guard District Seven in developing GIS enabled Digital Area Contingency Plans (DACP)
- Planning and Geographic Response Plan elements are converted to GIS data for easier use, maintenance, and archiving
- These GIS databases are used to create new map products and assist with response and training efforts
- Consistency is maintained through USCG changes of command

NOAA Cooperation

- Office of Response and Restoration
- Damage Assessment Center
- Coastal Services Center
- FWRI maintains the ESI database for Florida (typically a NOAA task)
- Cooperative development so NOAA spill modeling products can be used by the FMSAS
- Cooperative damage assessments for numerous spills in Florida waters
- NOAA spill management applications bundled with the Digital Area Contingency Plans

The Wish List for the Future

- ◆ Federal/State Coordination in GIS
- ◆ Coast Guard Institutional Support for GIS
- ◆ FWRI Institutional support for field mapping efforts (Mobile GIS)
- ◆ Cooperation to update Florida ESI Biology (FISH!, BIRDS, TERRESTRIAL MAMMALS, REPTILES, INVERTEBRATES, MARINE MAMMALS, HABITATS)
- ◆ New USCG-EPA Line
- ◆ Digitized (GIS) Dispersant Pre-Approval Zones

Questions???

Email: Richard.Knudsen@MyFWC.com

Phone 727 896-8626, ext 3036

Thank You!