

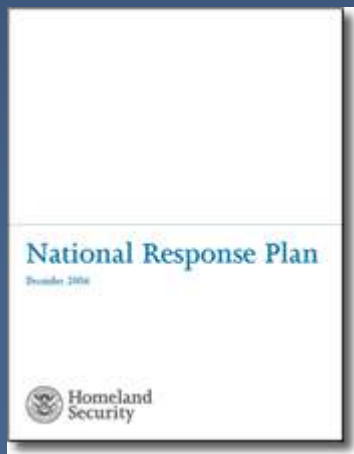
Area Command Review of Concepts & Applicability to ESF-10 Activation



Objectives

- **Introductory level discussion of Area Command (AC).**
- **Raise awareness of what AC is and prepare RRT members for deployments where AC is established.**
- **Describe the Area Command organization and relationship to EOCs, MACS and Joint Field Office.**
- **Discuss application of Area Command during SONS 2007.**

Area Command: Background



- Origin in managing wildland fires
- NRP and NIMS incorporate Area Command as an incident management tool
- Considered to be an advanced ICS topic for training purposes
- Most responders are not familiar with concept

NATIONAL INCIDENT MANAGEMENT SYSTEM

March 1, 2004

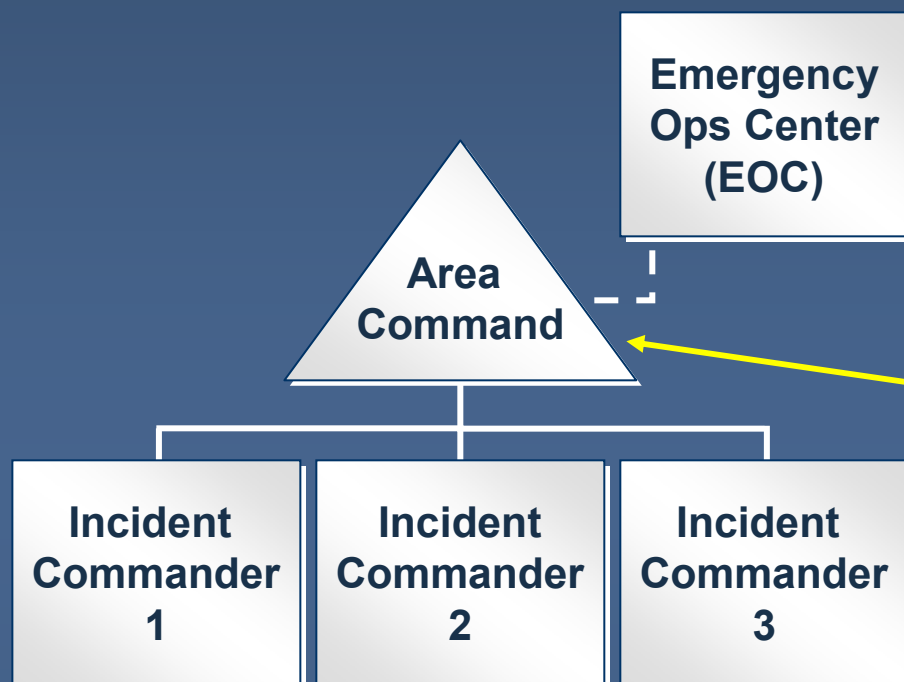


Definition of Area Command

- Area Command is used to oversee the management of:
 - Multiple incidents that are each being handled by an Incident Command System organization; or
 - A very large incident that has multiple incident management teams assigned to it.



Key Terms Review



Emergency Operations Center:

Supports local incident management activities.

Area Command: Oversees the management of multiple incidents and resource allocation. Area Command may be Unified, and works directly with Incident Commanders.

Incident Commander: Performs primary tactical-level, on-scene incident command functions. The Incident Commander is located at an Incident Command Post at the incident scene.

NRP Coordination Structure

Field Level

Regional Level

National Level

NIMS Role

Multiagency Coordination System

- Multiagency Coordination Entity**
- Strategic coordination

JFO
Coordination
Group

Disaster
Response
Group

Multiagency Coordination Centers/EOCs

- Support and coordination

Local
Emergency
Operations
Center

State
Emergency
Operations
Center

Joint Field
Office

Regional
Response
Coordination
Center

National
Operations
Center

Incident Command

- Directing on-scene emergency management



An **Area Command** is established when needed due to the complexity or number of incidents.

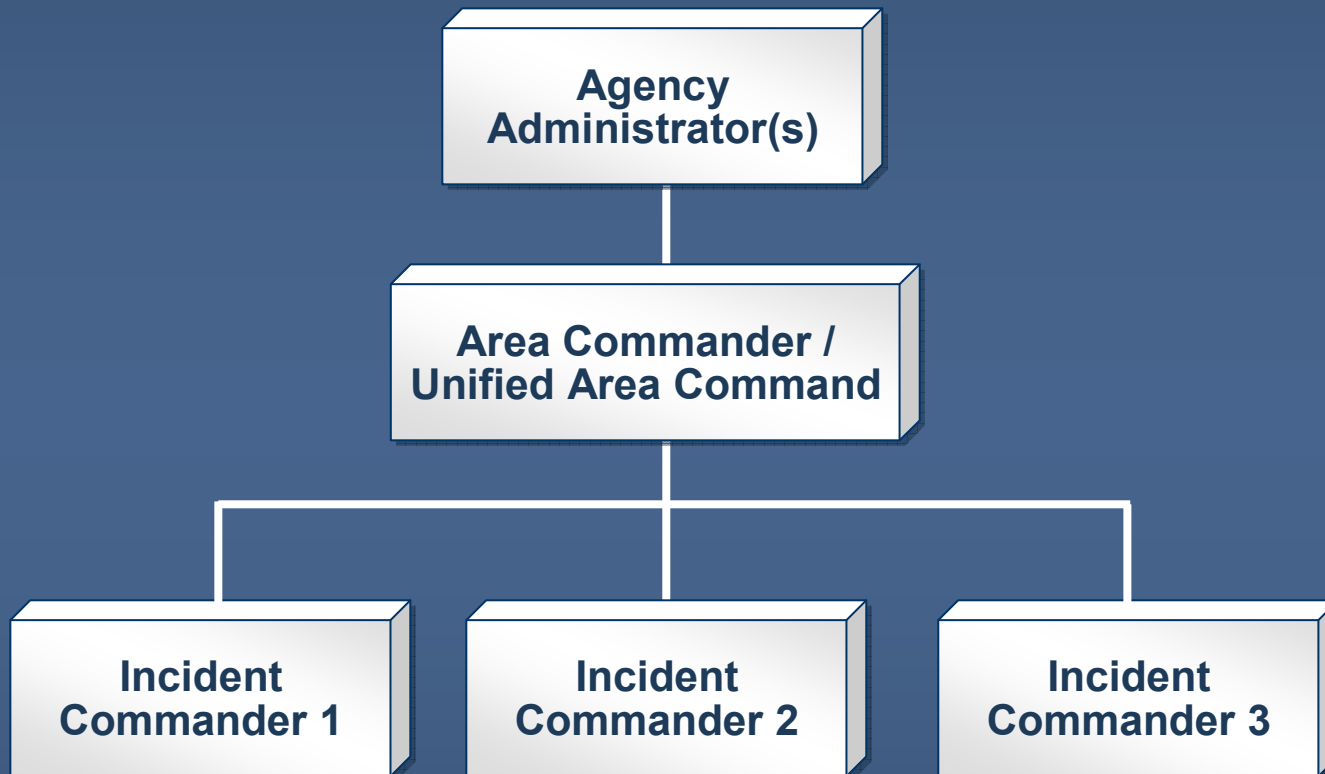
Role of regional components varies depending on scope and magnitude of the incident.

Incident
Command
Post

Incident
Command
Post

Incident
Command
Post

Chain of Command & Reporting Relationships



When Should Area Command Be Established?

Factors to consider include:

- **Several incidents within close proximity are using similar and limited critical resources.**
- **Difficulties are encountered with inter-incident resource allocation and coordination.**
- **When coordination and delivery of critical resources becomes difficult to manage from a remote location (agency EOCs).**

How Should Area Command Be Established?

- **By executive direction**
 - **Written delegation of authority from Agency Administrator**
 - **Requires that agency policies for establishing AC are in place and Area Commanders are briefed by an agency executive**
- **By Incident Commanders**

Advantages of Area Command

- Assists in interagency coordination.
- Ensures efficient resource use.
- Ensures that agency policies, priorities, constraints, and guidance are being made known to the Incident Commanders and implemented consistently across incidents.
- Reduces workload for agency officials.



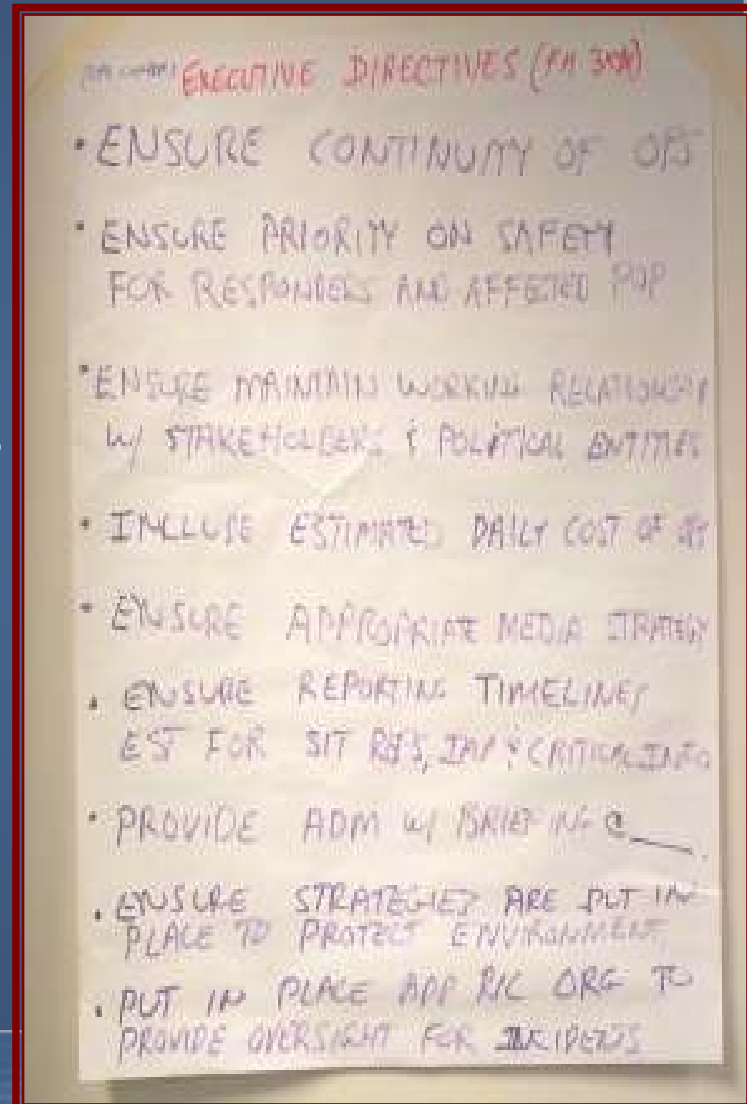
Area Command: Best Practices

Area Command should:

- Receive its authority through a written delegation of authority.
- Notify Incident Commanders of its authorities and roles.
- Be staffed with the best qualified, most experienced personnel.
- Operate under the same principles as ICS.
- Be kept small.

Initial AC Executive Meeting

- Executive Briefing
 - Agencies/Units involved
 - General Overall Situation
 - Jurisdiction – what incidents are under AC
 - Limitations on the Area Commander's authority

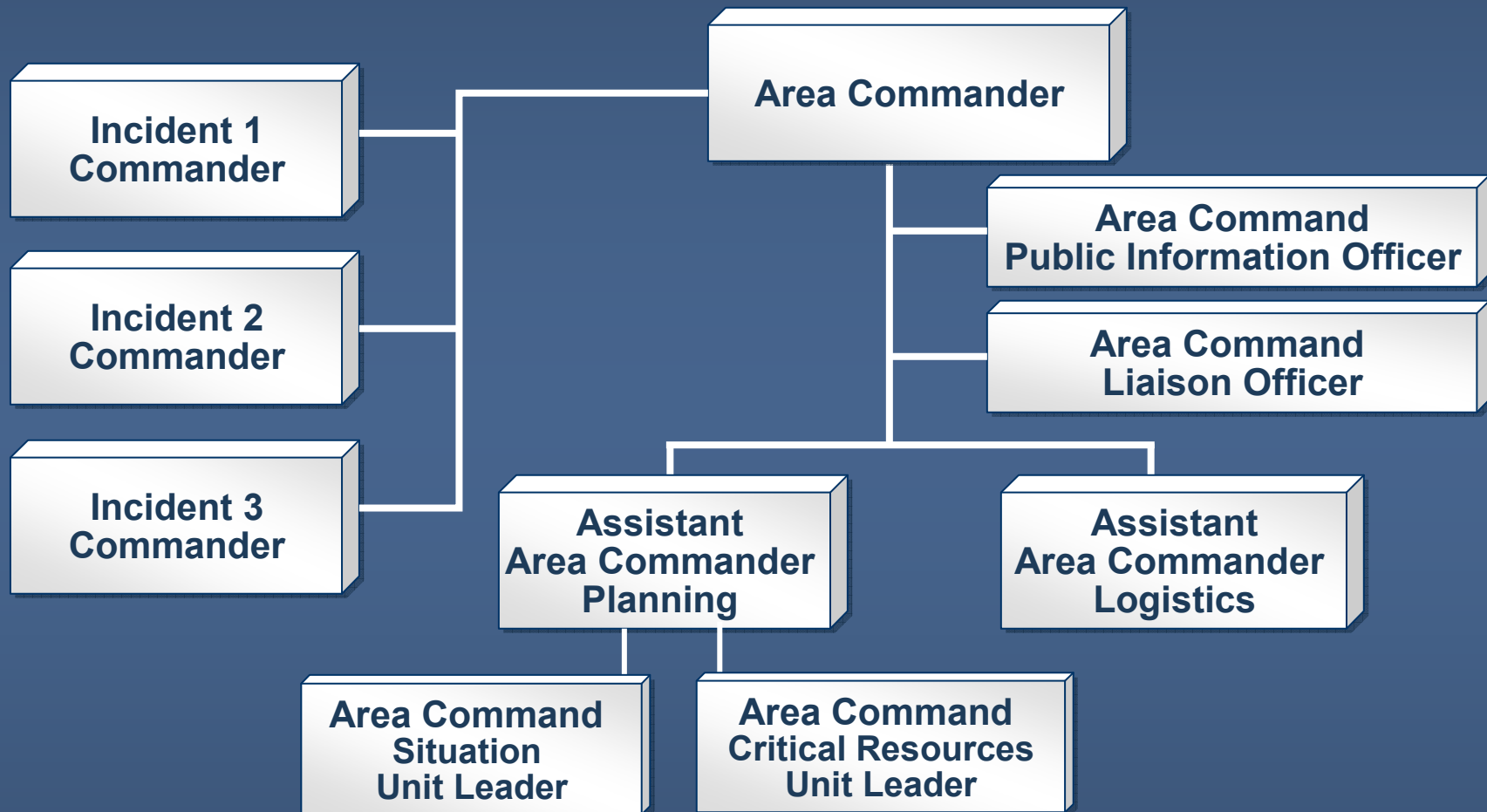


Area Command Responsibilities

- Set overall objectives.
- Ensure that incident objectives are met and do not conflict with each other or Agency policy.
- Establish incident-related priorities.
- Allocate/reallocate critical resources based on incident priorities.
- Ensure that Incident Management Teams are qualified and incidents are properly managed.
- Coordinate the Demobilization of assigned resources.
- Coordinate with Agency Administrator, EOC, other MAC entities, and the media.



Area Command Organization



AC Organization Options

Scientific Support Coordinator

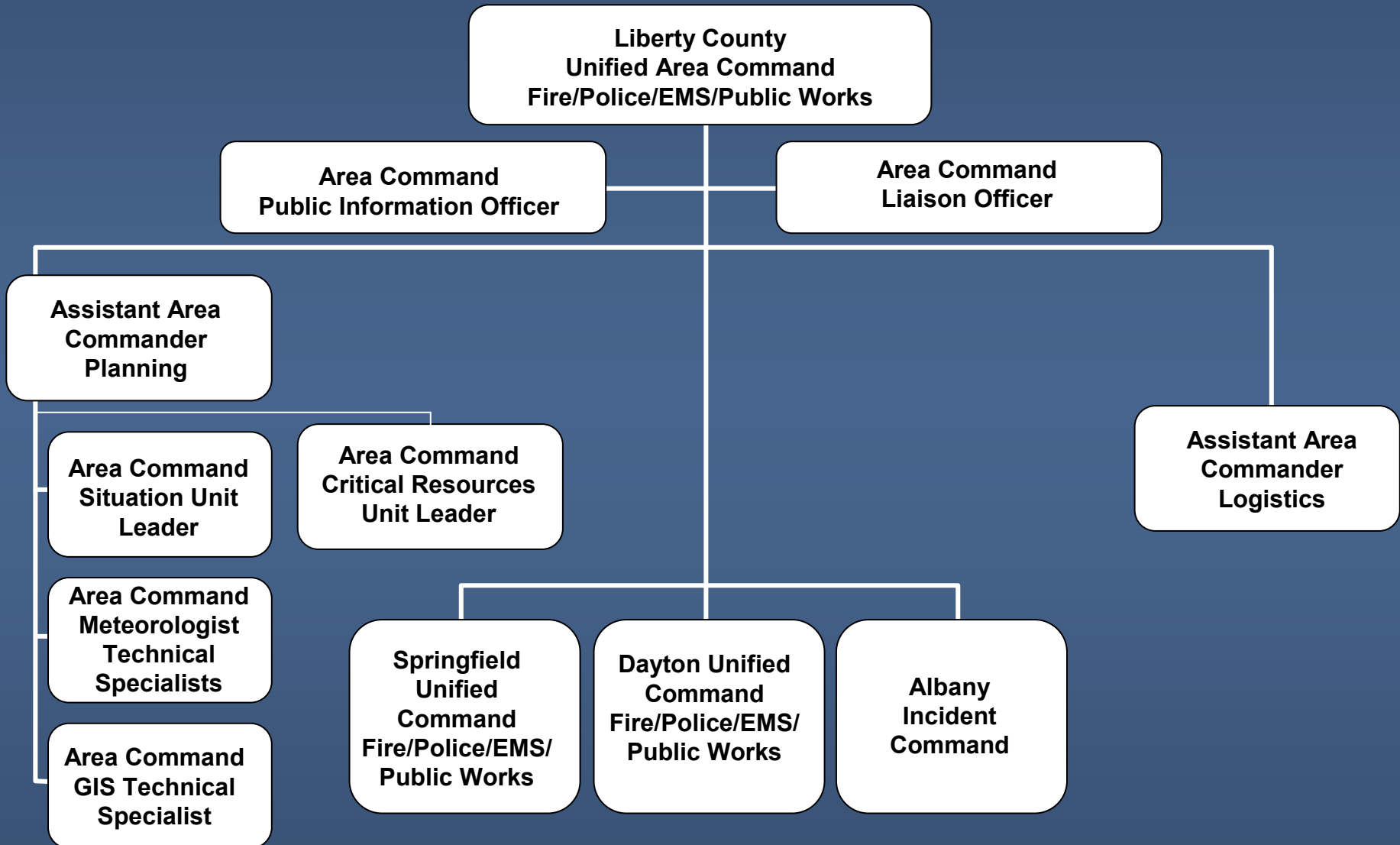
Aviation Specialist

Communication Specialist

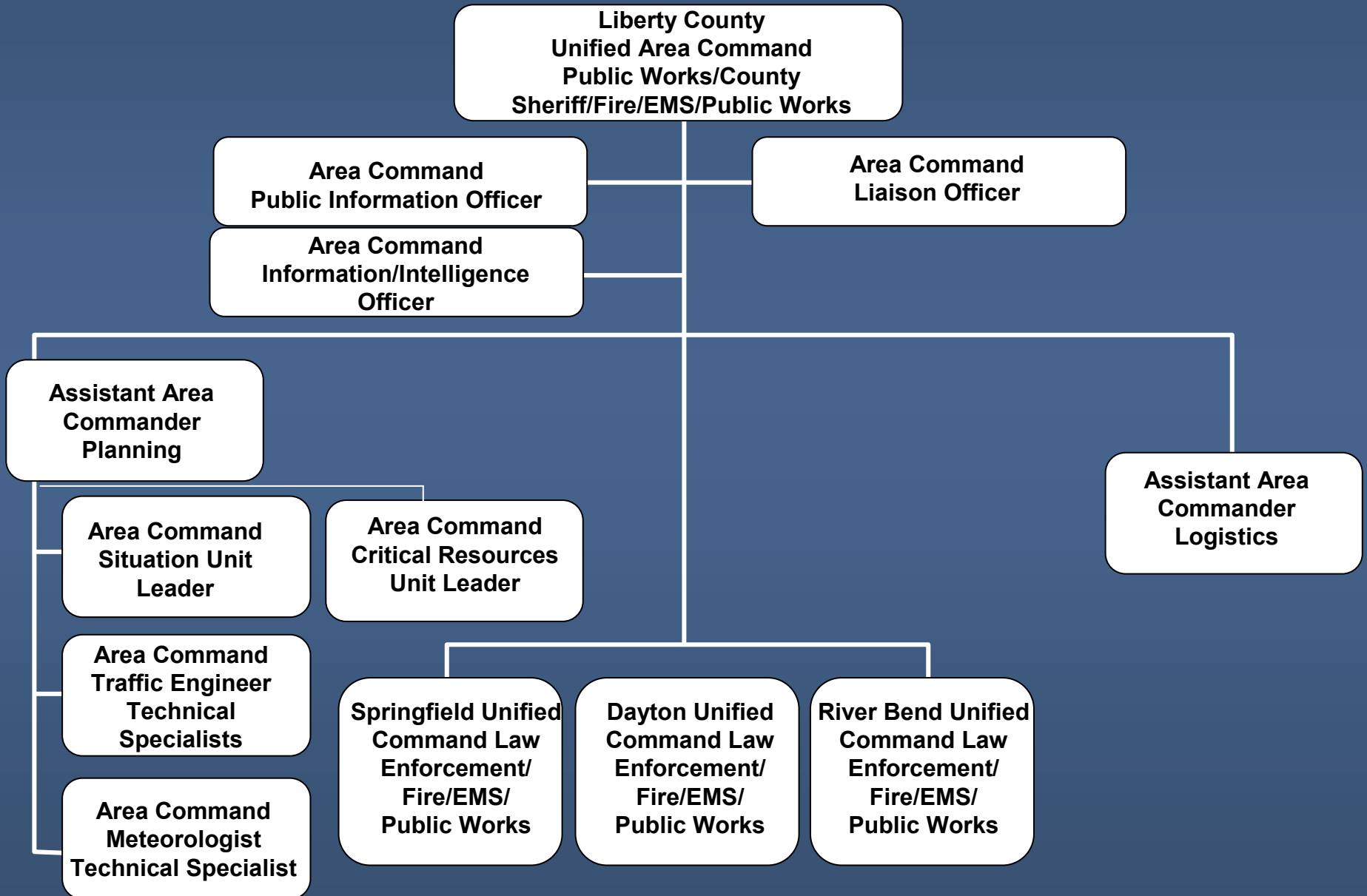
Operations Chief

**No Operations Section
Not an Option**

Example Organization Chart for Multiple Tornado Touchdowns



Example Organization Chart for An Approaching Winter Storm



Area Command Applied to SONS 07

- In EPA Region 4, 2 ACs established to oversee ICs in KY, MS, TN
 - Jackson, TN: AL, MS, TN
 - Evansville, IN: IL, IN, KY (2 EPA Regions)

EPA Issues:

Lack of clear delegation of authority to ACs

Multiple MACs

Role of EOCs

Where to Learn More About AC

- Additional Reference materials on Area Command
 - USCG Incident Management Handbook and Area Command Job Aid (<http://homeport.uscg.mil>)
 - EPA Incident Management Handbook (Draft).

Questions

