

NOAA CELEBRATES  
**200 YEARS** of SCIENCE, SERVICE, and STEWARDSHIP



# **Gulf of Mexico Marine Debris Project: Mapping, Website, and Outreach**

***RRT 4 Meeting  
August 8, 2007***

Nir Barnea  
NOAA OR&R

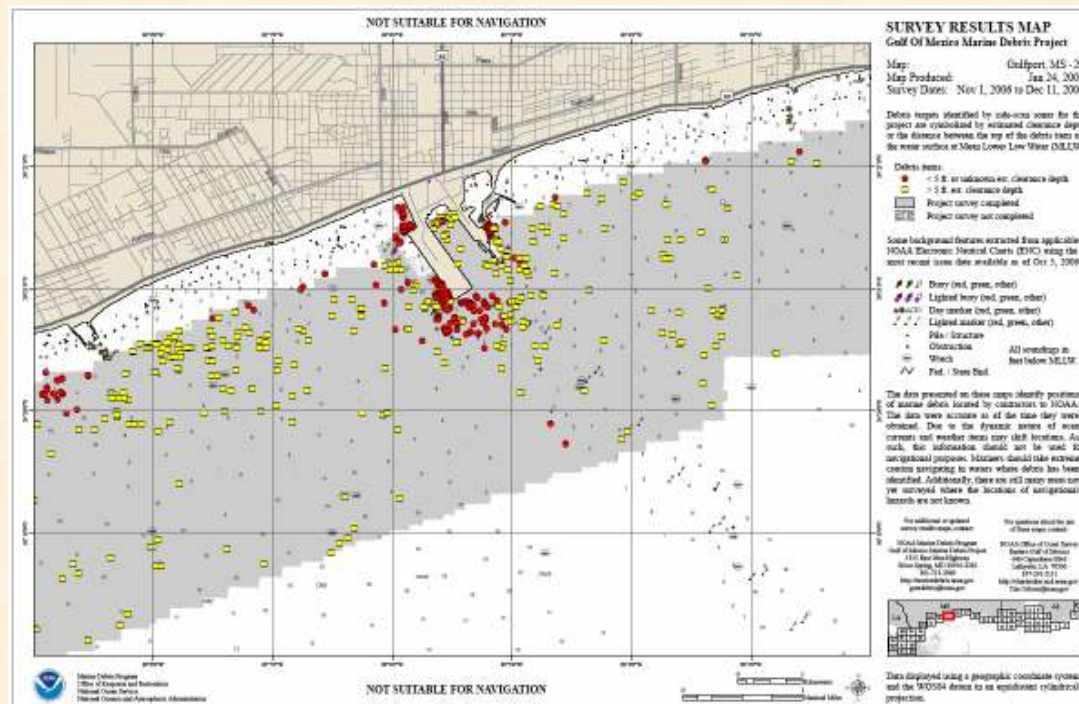


# Overview

- ORR roles in the project
- Maps
- Website
- Data analysis
- Outreach
- Additional products
- The role of our partners

# OR&R Role

- Generate maps, maintain website
- Interact with local stakeholders
- Ensure data is available to removal entities
- Public outreach



<http://gulfofmexico.marinedebris.noaa.gov/>

# The Project Website

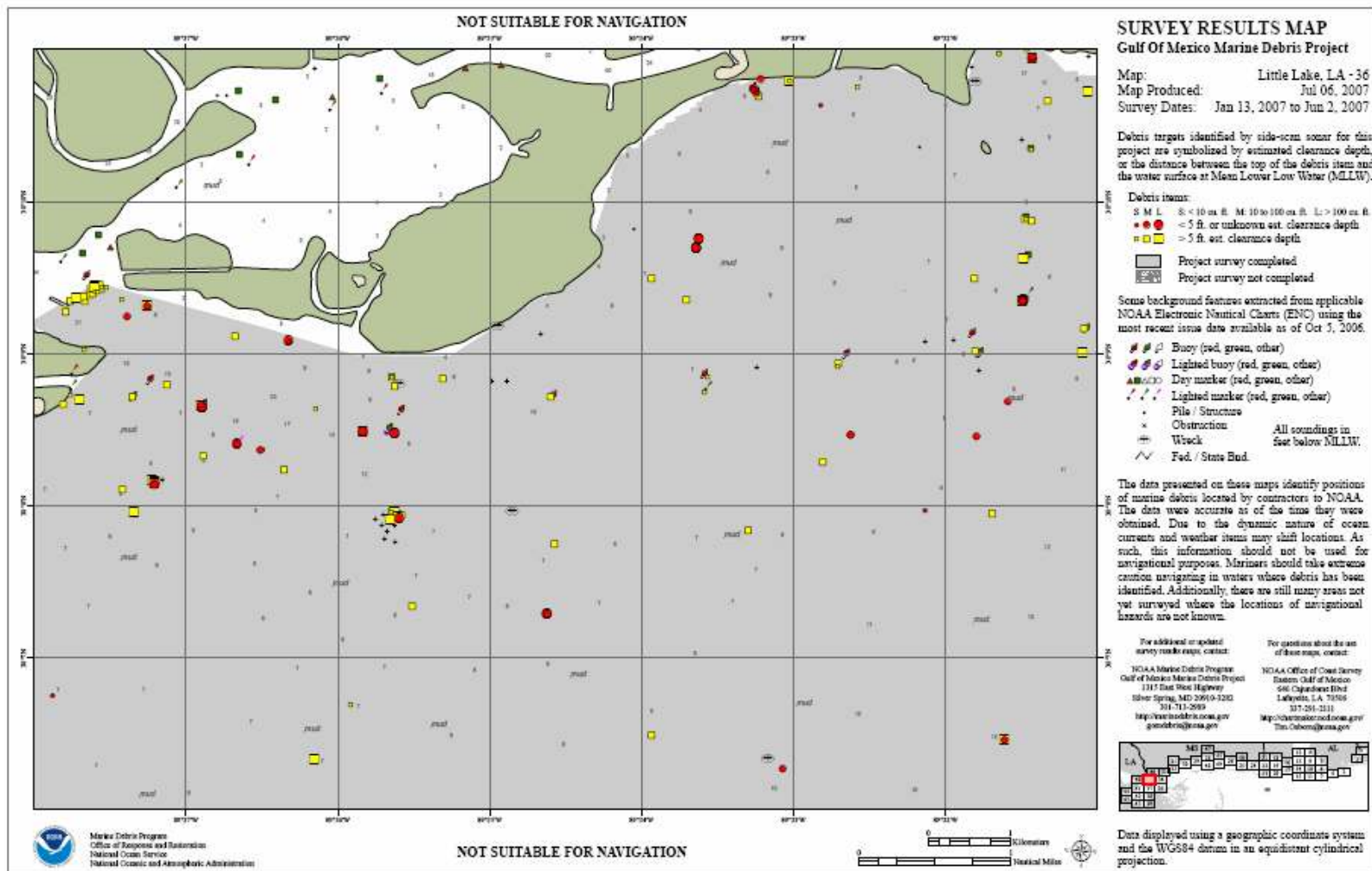
- Survey maps and data, updated every 2-3 weeks
- Link to interactive Internet Mapping Server (Arc IMS)
- FEMA debris removal maps and tables, updated weekly
- Links to internal /external project partners
- Outreach products, media information, related publications, photos, and videos



<http://gulfofmexico.marinedebris.noaa.gov/>



# Survey Map – Lake Borgne, LA





# Internet Map Server (IMS)

NATIONAL OCEANIC AND ATMOSPHERIC ADMINISTRATION  
**MARINE DEBRIS PROGRAM**

Gulf of Mexico  
**MARINE DEBRIS PROJECT**

**NAVIGATION**

Zoom In Zoom Out Previous

Full Extent Pan

**OTHER TOOLS**

Identify Map Tips

**OUTPUT**

Print Map Download

| Field                     | Value          |
|---------------------------|----------------|
| Record #                  | 1              |
| Item ID                   | 119162625      |
| Survey Date               | 29 Apr 2007    |
| Latitude                  | 30.105413      |
| Longitude                 | -89.6026103333 |
| Image                     | 119162625.tif  |
| Height (ft)               | 5.8399         |
| Length (ft)               | 5.8399         |
| Width (ft)                | 4.65879        |
| Charted Depth (ft)        | 7              |
| Est. Least Depth (ft)     | 7.97244        |
| Est. Clearance Depth (ft) | 8              |
| Est. Volume (cu ft)       | 158.885        |

Longitude: 89° 34'W Latitude: 30° 11'N

**DATASETS**

Debris Locations

- < 10 cu. ft., < 5 ft. or estimated clearance depth
- 10 - 100 cu. ft., < 5 ft. or estimated clearance depth
- unknown estimated clearance depth
- > 100 cu. ft., < 5 ft. or estimated clearance depth
- < 10 cu. ft., > 5 ft. or estimated clearance depth
- 10 - 100 cu. ft., > 5 ft. or estimated clearance depth
- > 100 cu. ft., > 5 ft. or estimated clearance depth

Survey - Complete

Survey - Proposed

Runs

Refresh Map

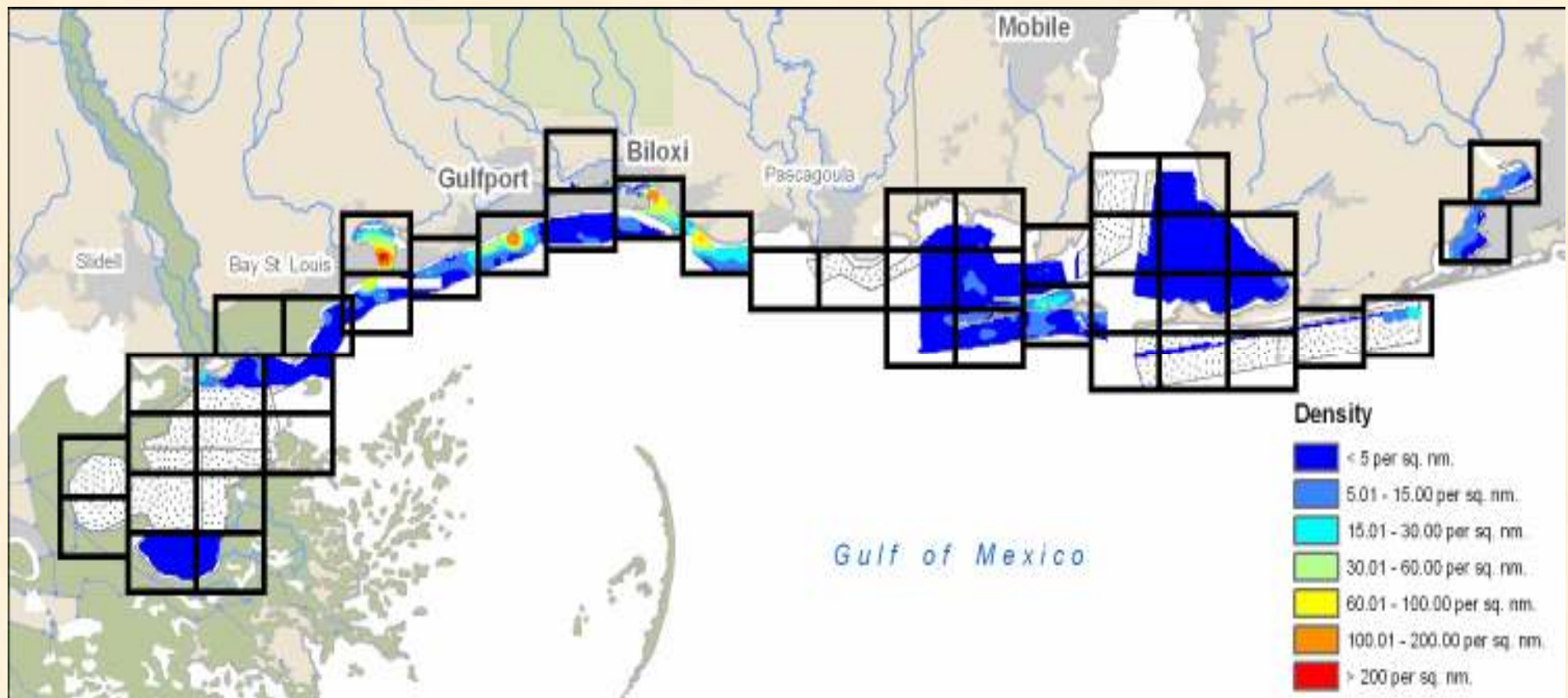
Auto Refresh

**Help:**

- A visible dataset, click to zoom.
- A visible dataset, but not selected.
- The active dataset.
- A closed legend, click to open.



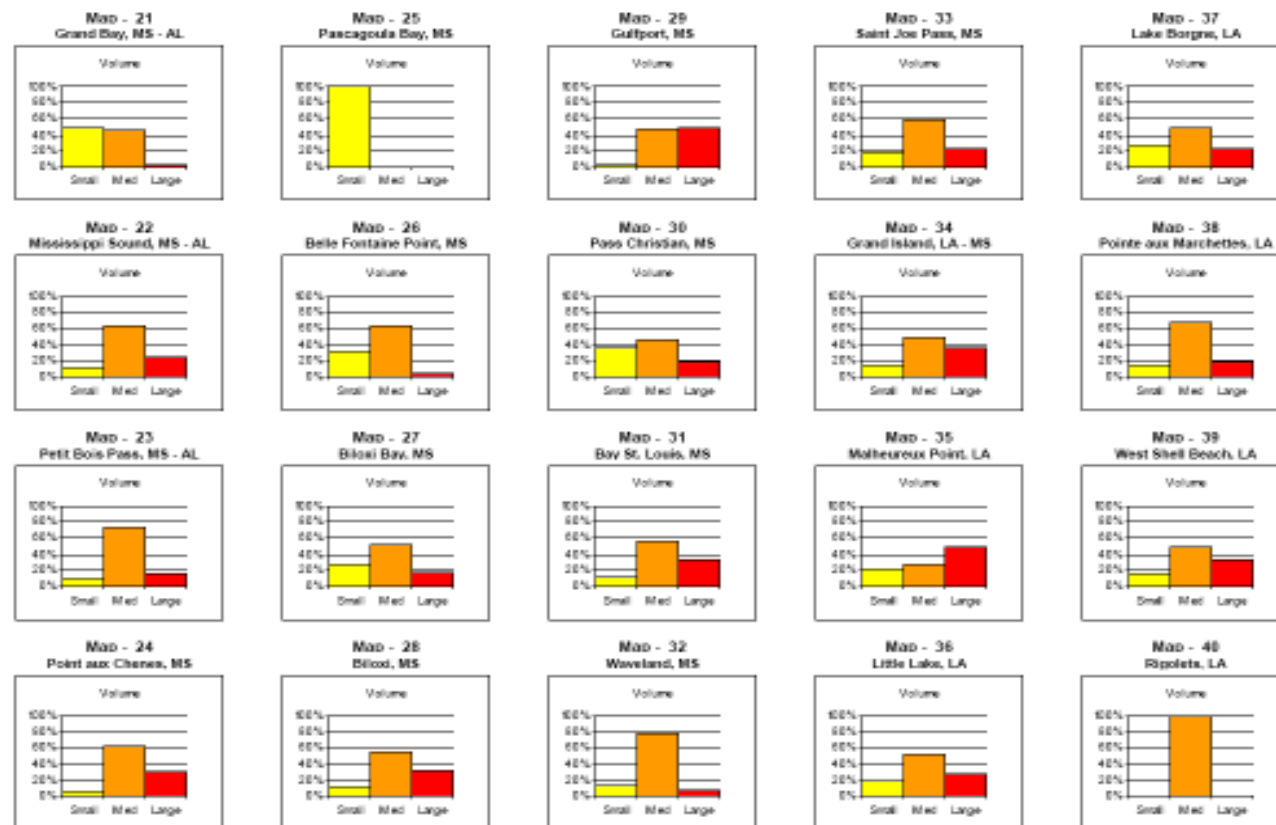
# Density by Geographic Region





# Data Analysis: Volume Histograms

GOMMDP Volume Histograms



NOAA Marine Debris Program  
Gulf of Mexico Marine Debris Project  
[www.marinedebris.noaa.gov](http://www.marinedebris.noaa.gov)  
Jan 6, 2007

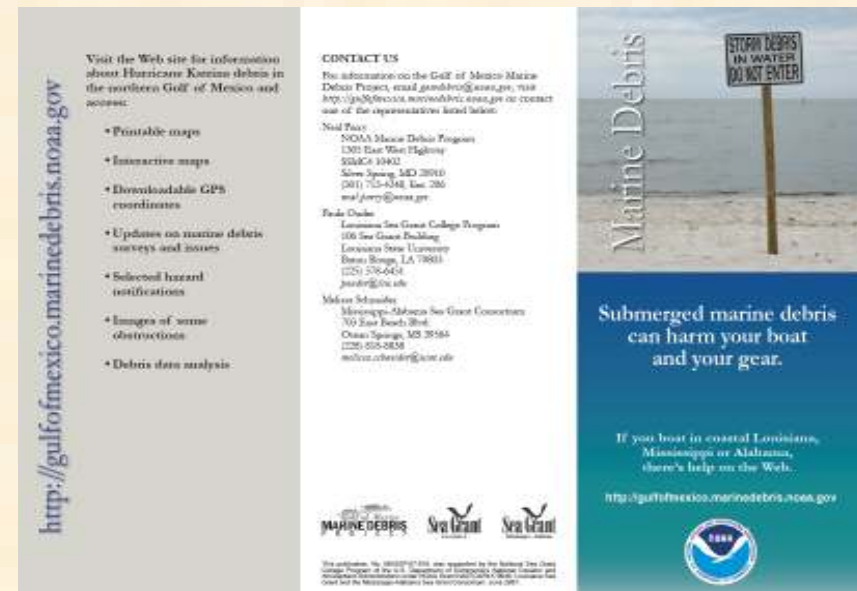




# Outreach Products



Poster



Brochure



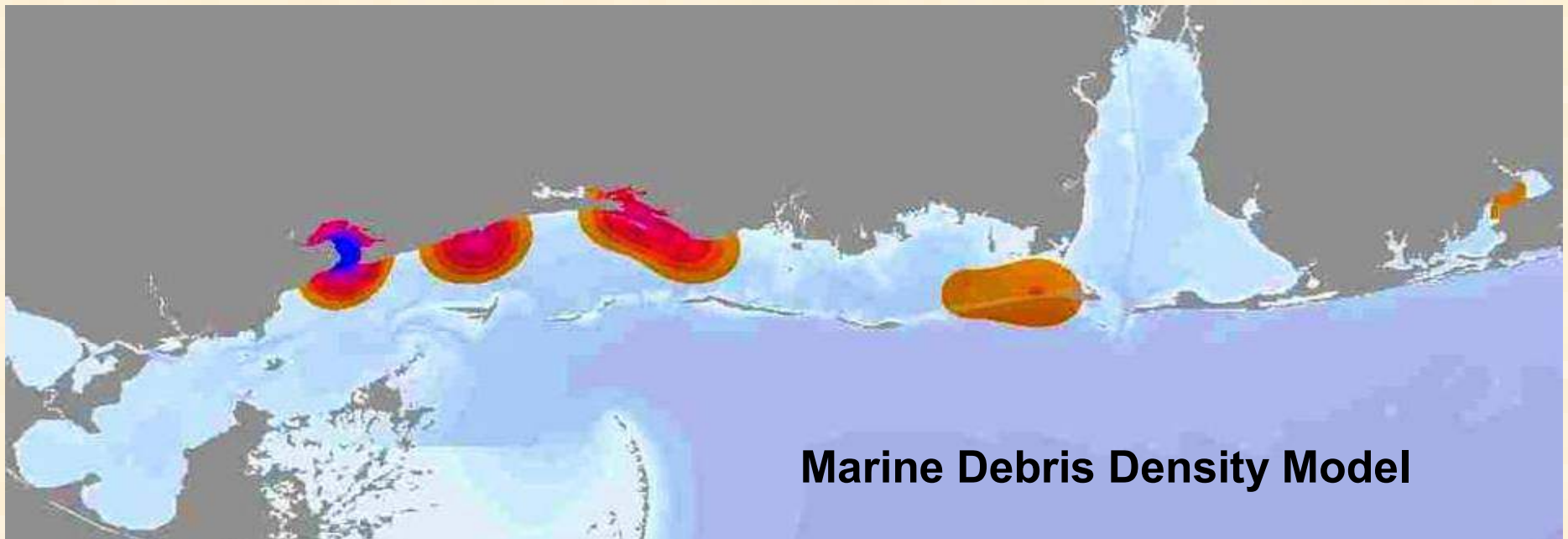


# Our Project Partners

- Initial consultation on survey areas
- Input on maps and website
- Continuous feedback



# In Progress....



*Figure depicting debris density. Derived from actual survey data; 2006 / 2007*

**Goal:** *Increase efficiency of post-incident response to marine debris*

NOAA CELEBRATES  
**200 YEARS** of SCIENCE, SERVICE, and STEWARDSHIP



# Thank You

*Nir Barnea*  
**NOAA OR&R Marine Debris Program**  
*nir.barnea@noaa.gov*

