

# FEBRUARY 2008 RRT TABLETOP EXERCISE (TTX)

## **Day 2**

## **Incidents**

# FEBRUARY 2008 RRT TTX

## **FORMAT:**

- All Incidents Presentation & Background
- Incident Discussion Points
- Discussion by All of Response Actions
- Discussion by All of Roles and Responsibilities
- Discussion of Agency Response Actions

# Incident #4

- With the closing of the Interstate 40 crossing of the Mississippi River, additional unplanned use of Interstate 20 bridge over the Mississippi River is building. There are already reports of accidents and associated traffic back-ups, with both hazardous material transporters and at least one transporter of radiological waste from the Savannah River Site are known to be involved in the traffic back-ups.

# Incident #4 - WIPP Routes



# Day 2 Incident #4

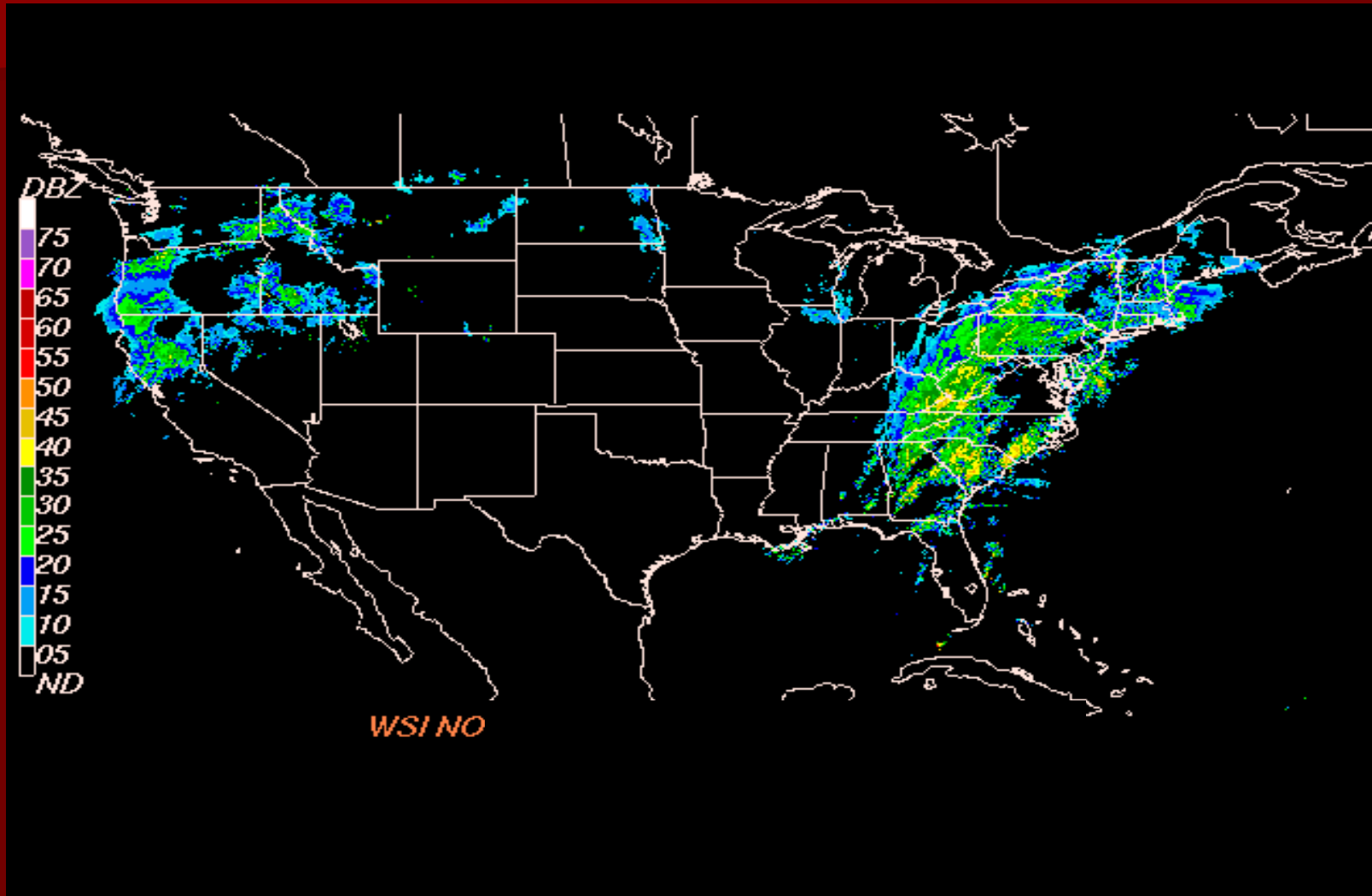


## Day 2

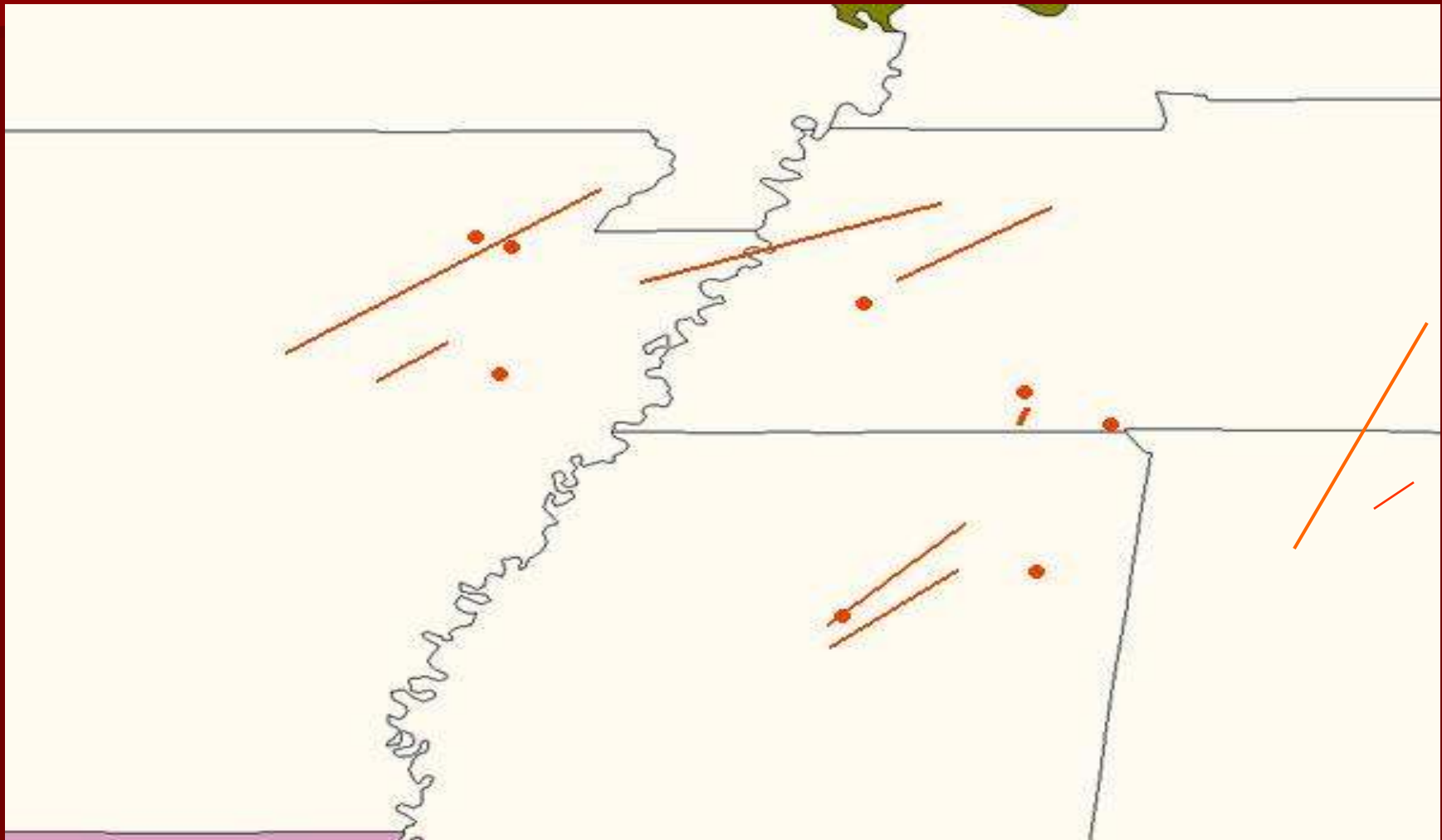
# Weather-related Incident

- A late-breaking second wave of tornadic and thunderstorm activity has broken out in Northern Alabama on March 24<sup>th</sup>
- This tornadic and thunderstorm activity has sparked another Incident with potential catastrophic consequences in Decatur, Alabama

# March Tornado Outbreak – Day 2 Radar



# Observed Tornado Paths – Day 2



# Incident # 5

Tornado activity and lightning has also created a major incident at the 4Z Company manufacturing plant located on State Docks Road, Decatur, AL. Several fires have been reported at the facility as well as documented releases to the ground and into Wheeler Lake. A visual sheen can be observed on the lake surface running downstream and it appears this sheen has traveled to the City of Decatur Water plant located at 1900 Market Street.

Local responders have indicated a rapidly developing smoke plume drifting to the Southeast from the facility. Due to the influx of reported exposure cases at downwind medical facilities, a evacuation of downwind neighborhoods appears to be appropriate.

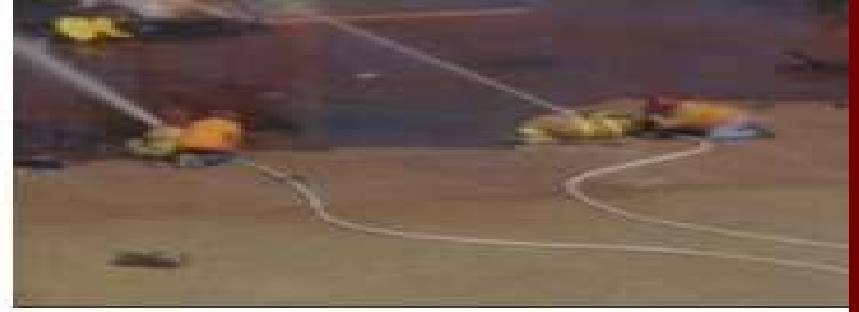
# Incident # 5

- Based on initial review of the facility inventories, the following chemicals are suspected to be involved with the fire and resulting smoke plume:
  - Styrene – 10,000 pounds
  - Cyclohexane – 20,000 gallons
  - Acrylic Acid - 10,000 pounds
  - Methyl Methacrylate – 20,000 pounds
  - Ethyl acrylate – 10,000 pounds

# Incident #5



# Incident #5



# Incident # 5 – Site Locations



# Incident #4 and #5 Responses

## REMEMBER INCIDENTS 1, 2, 3 and 4

- What would be your first response to these new Day 2 Incidents when notified?
- What would be your second action/response to these new Day 2 Incidents?
- What would be your third response to these new Day 2 Incidents?

# Incident #4 and #5 Responses cont.

## REMEMBER INCIDENTS 1,2,& 3

- What would be your priorities?
- Who would you call and why?
- What would you bring to these new Day 2 Incidents?
- Discuss logistics of the actual clean-ups
- Where would you start?
- Discuss your Agency's response to these new Day 2 Incidents
- What resources would you mobilize to these scenes

# ALL Incident Responses

## **DISCUSSION**

# FEBRUARY 2008 RRT TTX

Please remember to use the Incident Boards  
& Parking Lot Issues Board

**END**

**Thank you**