



EPA's Role in Emergency Response for the Water Sector



CAPT David M. Apanian, P.E., MSCEE
EPA Region 4
Water Management Division

August 08, 2007



Post Katrina Activities

- ◆ **Lessons Learned – Division and Region**
- ◆ **Agency**
- ◆ **IG Report and Recommendations**

- ◆ **Two Key Finding:**

(1) EPA & USACE Need to Coordinate to Support the Water Sector Under the NRP

(2) EPA Needs to Respond as a Single Entity



NRP ESF's – Water Sector

- ◆ ESF-1 Transportation
- ◆ ESF-2 Communications
- ◆ ESF-3 Public Works/Engr.
- ◆ ESF-4 Firefighting
- ◆ ESF-5 Emergency Mgt.
- ◆ **ESF-6 Mass Care/Housing**
- ◆ ESF-7 Resource Support
- ◆ **ESF-8 Public Health & Med.**
- ◆ ESF-9 Urban SAR
- ◆ **ESF-10 Oil & Hazardous Materials**
- ◆ **ESF-11 Agriculture & Natural Resources**
- ◆ ESF-12 Energy
- ◆ ESF-13 Public Safety
- ◆ **ESF-14 Long Term Recovery**
- ◆ ESF-15 External Affairs

Lead Agency

Designated Support Agency for Water Sector

Non-Designated Water Sector Role



ESF – 3: Public Works and Engineering Annex of the NRP

- ◆ **USACE Lead**
- ◆ **EPA: Support Agency for Water Sector**
 - **Conduct Infrastructure Protection Activities per HSPD-7**
 - **Determine Suitability for Human Consumption**
 - **Identify Water & Wastewater Needs**
 - **Investigate Contamination Incidents**
 - **Coordinate Water Sector Issues with Other ESF's**
 - **Provide Technical Assistance to States & Tribes**



ESF-3: USACE & EPA Coordination

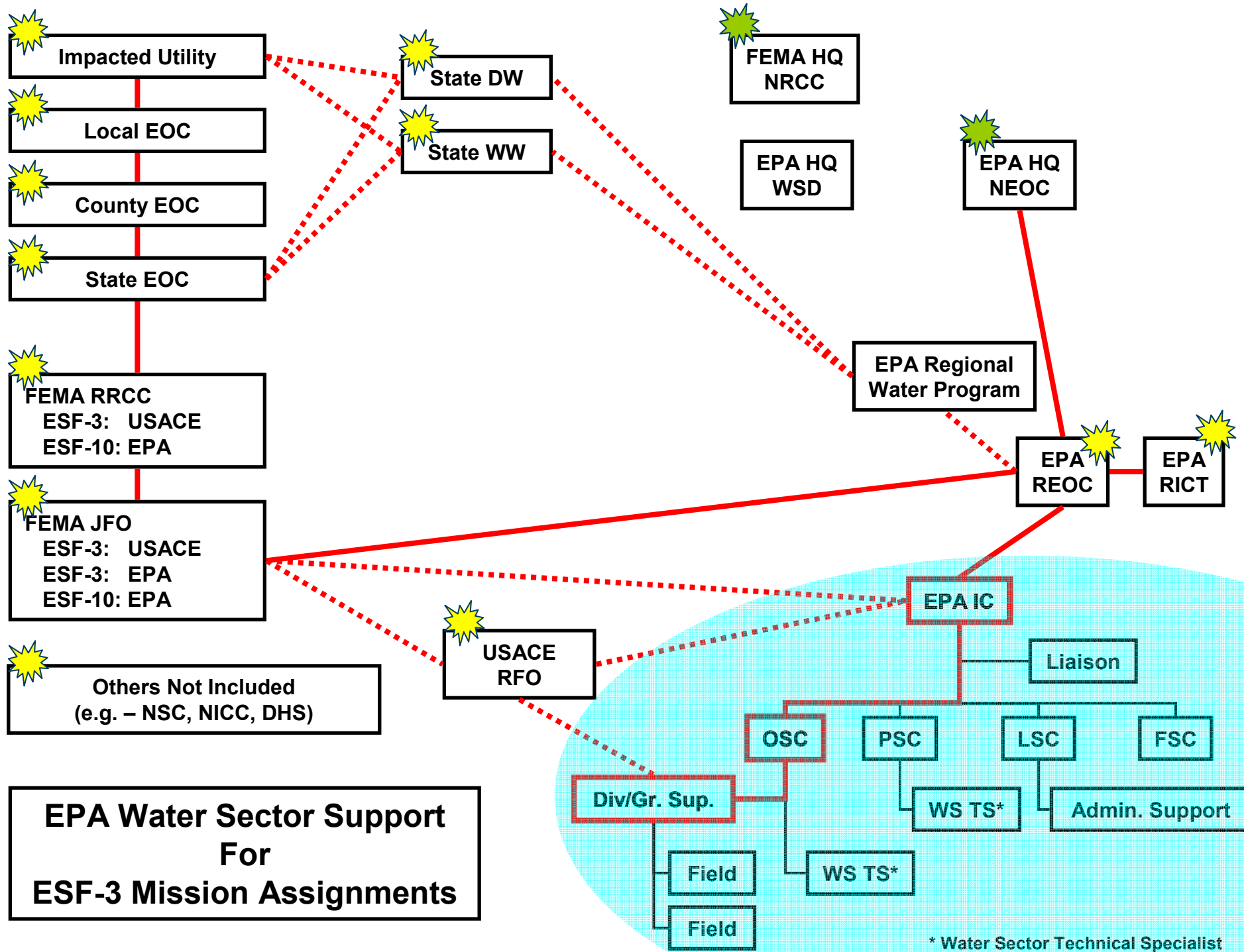
- ◆ **HQ Level Agreement Between Agencies**
- ◆ **USACE/EPA Field-Level Coordination Doc.**
- ◆ **Pre-Scripted Mission Assignments @ FEMA**

- ◆ **Update ESF-3 Field Manual**
- ◆ **Update EPA and USACE SOPs**
- ◆ **“Spread the Word”**

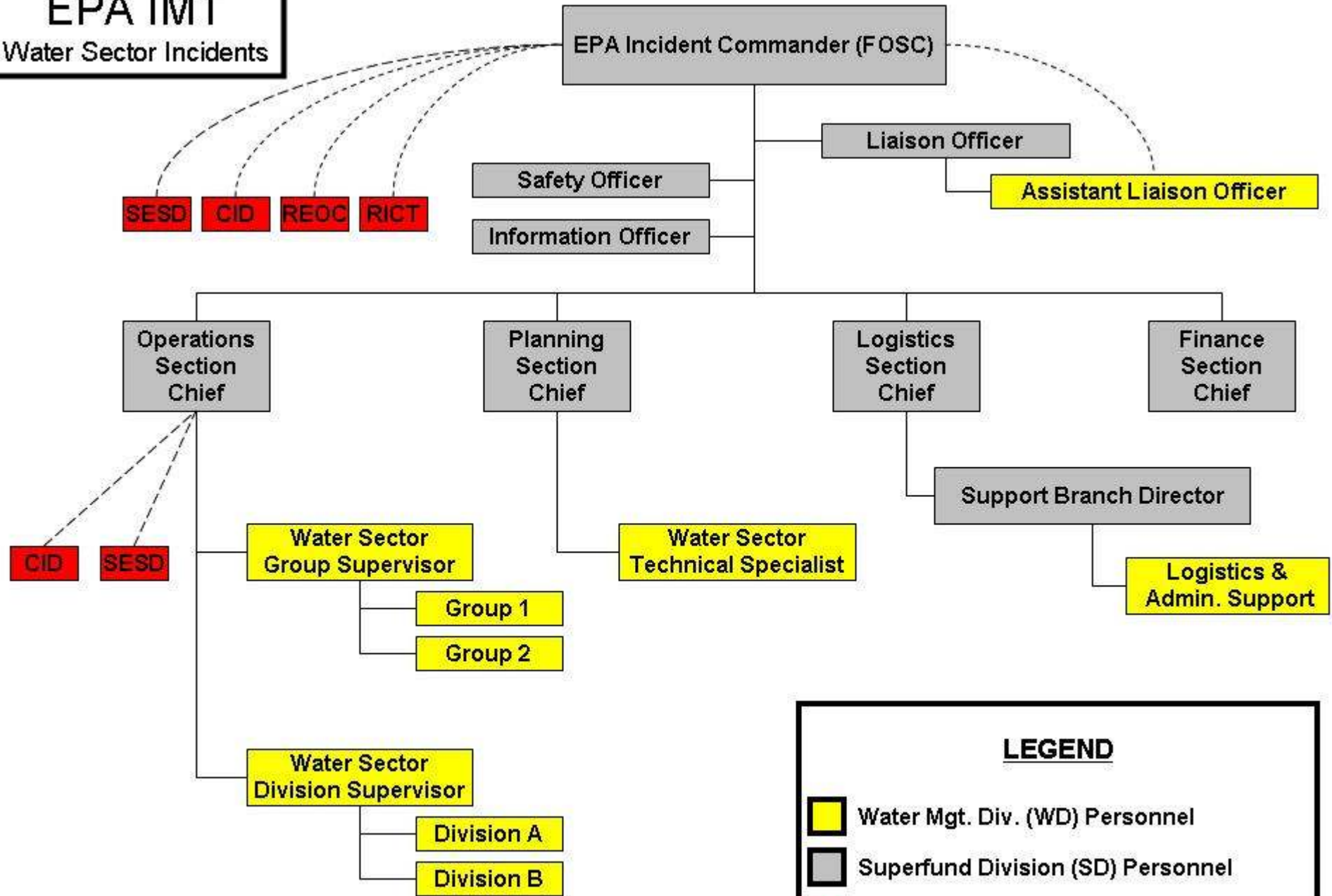


Primary EPA Support Activities

- ◆ **Federal Operations Support**
- ◆ **Technical Assistance to States and Tribes**
- ◆ **FEMA Public Assistance Program**



EPA IMT
Water Sector Incidents



LEGEND

- Water Mgt. Div. (WD) Personnel
- Superfund Division (SD) Personnel
- Other R4 Personnel (i.e. – CID, SESD, etc.)



WD-ERRT

- ◆ **Water Management Division – Emergency Response and Recovery Team (WD-ERRT)**
 - Scenarios
 - Team Composition
 - SOP's
 - Response Protocols
 - Training
- ◆ **Region 4's WD-ERRT ~ 45 Responders**



WD-ERRT Planning Scenarios

- ◆ **Baseline Preparedness**
 - Minimum Initial Baseline Preparedness Goal
- ◆ **Large Scale Incident**
 - Katrina Size Event(s)
 - Impacting 2 States Simultaneously
- ◆ **Catastrophic Incident**
 - New Madrid Earthquake
 - Several Major Storms
 - Terrorist Incidents
 - Impacting 4 States Simultaneously



WD-ERRT Training Program

◆ Training – All WD-ERRT Responders

- Online: ICS 100, -200, -700, -800
- WD Core: HAZWOPER, First Aid, CPR, DW-101, WW-101
- Advanced:
 - Sanitary Survey, Basic Inspector
 - ICS 300/400 Intermediate/Advanced ICS
 - ICS 339 – Division/Group Supervisor
 - ICS 412 – Liaison Officer (LNO)

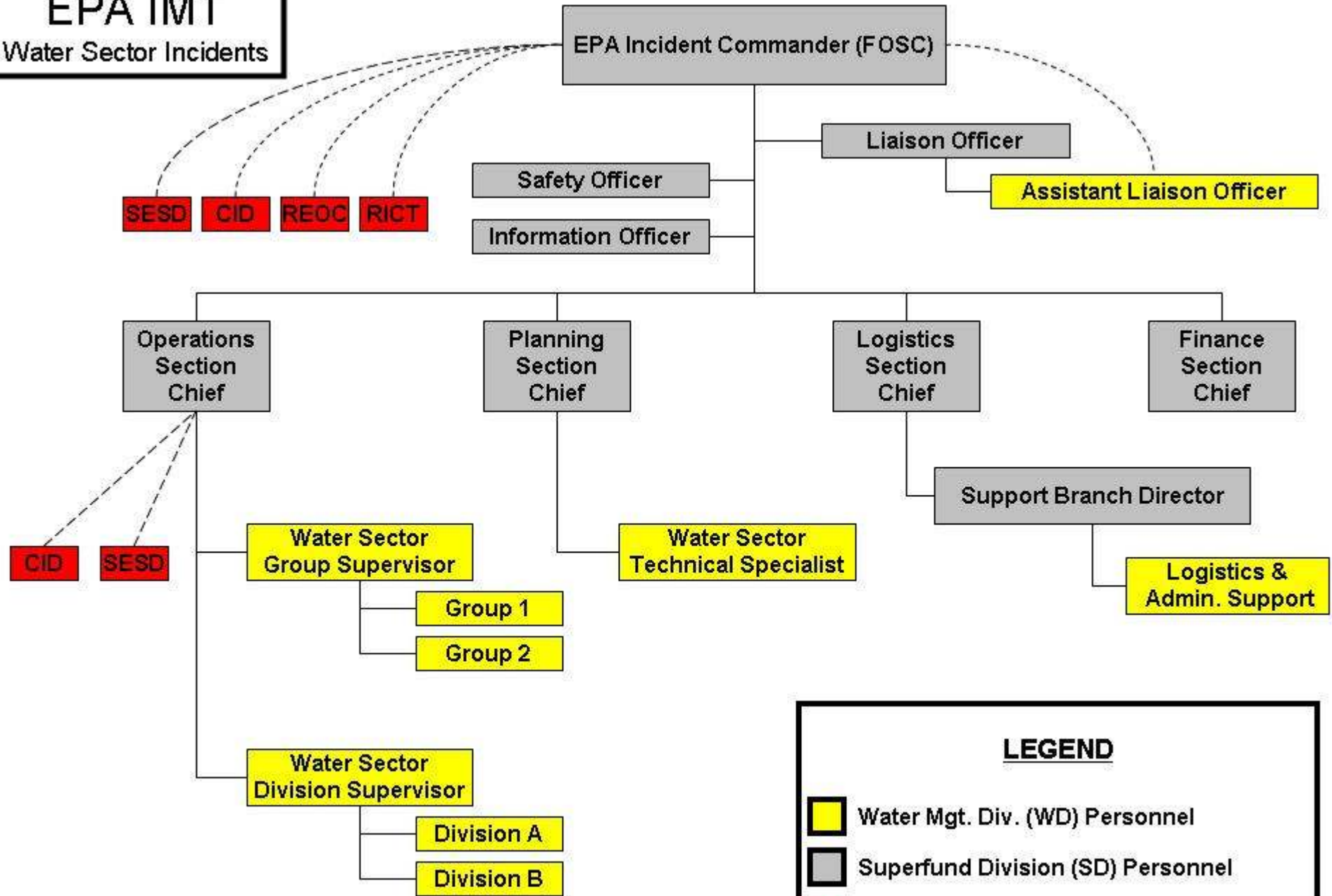
◆ Goal: Cross-Trained by 2012



Regional Response Protocols: Water Sector

- ◆ **WD-ERRT: NOT JUST FOR HURRICANES AND EARTHQUAKES!**
- ◆ **Non-NRP Incidents such as: Contamination, or Threats of Contamination, of Water Systems**
- ◆ ***“Region 4 Approach to Response For Water Sector Incidents”***
 - **Superfund Division, Water Management Division, Criminal Investigations Division, Office of External Affairs, SESD Laboratory.**

EPA IMT
Water Sector Incidents



LEGEND

- Water Mgt. Div. (WD) Personnel
- Superfund Division (SD) Personnel
- Other R4 Personnel (i.e. – CID, SESD, etc.)



Region 4 Water Sector Support

R4 Duty Officer: (404) 562-8700



HS Funding

- ◆ **EPA STAG HS Grants ~ \$5 M/yr Nationally**
- ◆ **Region 4 FY07 - \$724k (\$50,000 - \$184,700)**



Environmental Laboratory Response Network (eLRN)

- ◆ **9/11 & Anthrax Demonstrated Need**
- ◆ **Key Activities of Building an eLRN include:**
 - **IAG's with National Special Reference Laboratories**
 - **Alliance with CDC's LRN**
 - **Develop Additional Governmental Laboratory Capability**
 - **AHRF**
 - **Designate a Permanent EPA Organization to Manage Cross-agency Laboratory Issues**



Regional 4 Laboratory Response Plan (RLRP)

- ◆ eLRN “*Under Development*” (i.e. – not ready) in Response to HSPD-9
- ◆ As Interim Measure, Each EPA Region Developing their own Regional Laboratory Response Plan (RLRP)
- ◆ Purpose: Establish a comprehensive, regional, all-hazards approach to drinking water laboratory response across a spectrum of activities including preparedness, response, remediation, and recovery.
- ◆ Region 4’s Efforts Led by SESD



Regional 4 RLRP - Partners

AL: DEM Lab

FL: DEP & DOH

GA: DNR & CST

KY: DEP

MS: DEQ

NC: DHHS & DENR

SC: EQC

TN: DOH

Charlotte-Mecklenburg , Greenville, Gwinnett



Other “Stuff”

- ◆ Meetings – Meetings – Meetings – Meetings.....
- ◆ Laboratory Networks
- ◆ Mutual Aid Networks
- ◆ EMAC Implementation
- ◆ Administrator Priorities
- ◆ HS Initiatives
- ◆ NRP/NIMS Reviews
- ◆ SONS-07
- ◆ Water Security (WS) Initiative (i.e. – WaterSentinel)
- ◆ Decontamination
- ◆ Exercises/TTX
- ◆ Unknown Contaminants - Triage Protocols
- ◆ Collaborations (i.e. – AWWA, NRWA, etc.)
- ◆ Outreach to States, Tribes, and Federal Partners



WD-ERRT Contacts

- ◆ **Region 4 Emergency Operations Center**
(404) 562-8700
- ◆ **National Response Center (NRC)**
(800) 424-8802
- ◆ **David Apanian**
Cell: (404) 432-9716
- ◆ **Chris Thomas**
Cell: (404) 323-0029