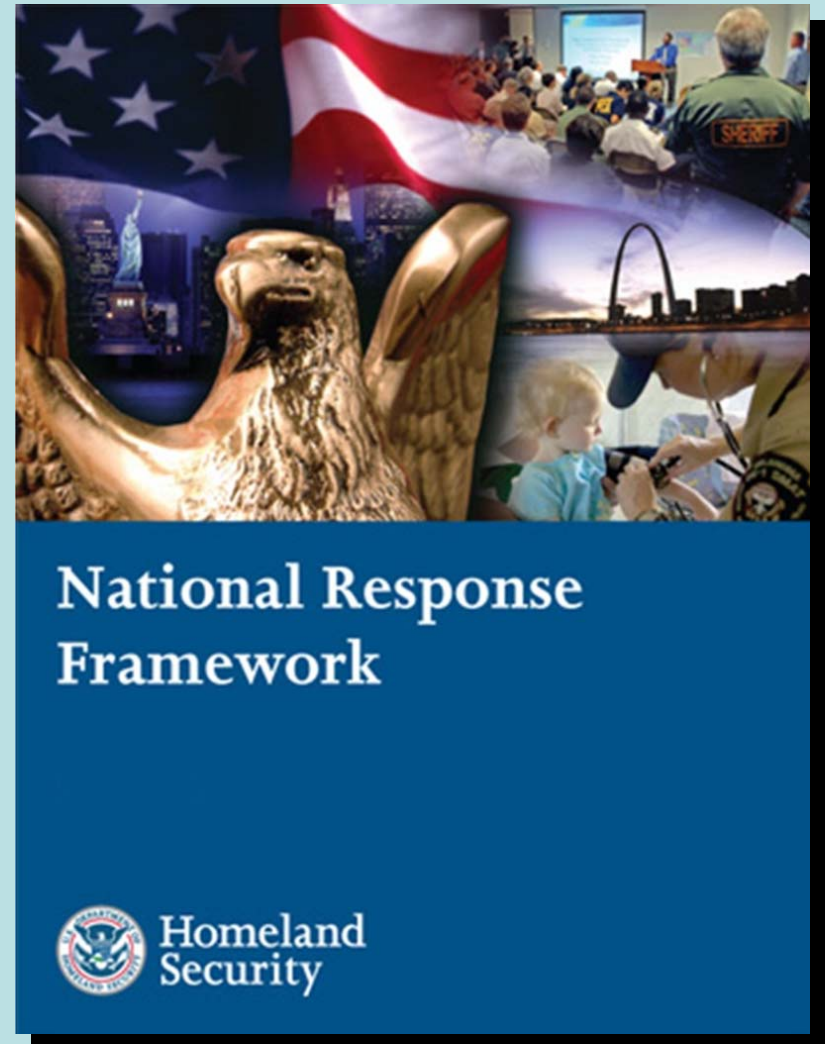


National Response Framework Links to the

National Oil & Haz Sub Pollution Contingency Plan

*Bob Pond
US Coast Guard
August 2008*

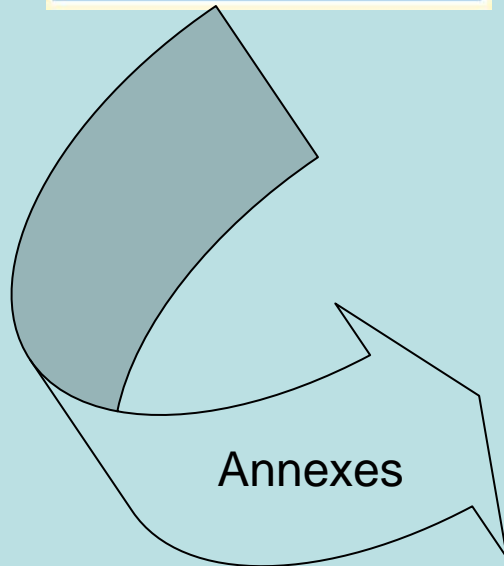
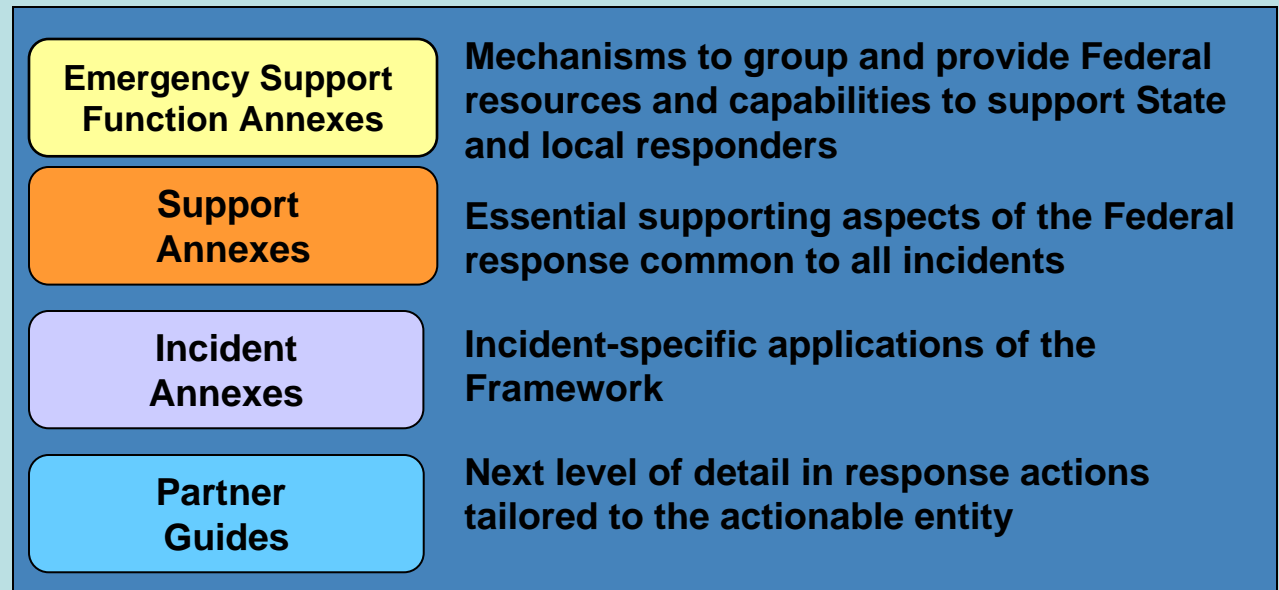
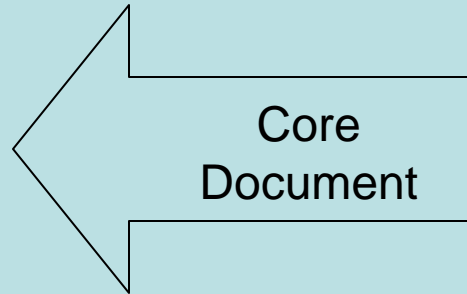
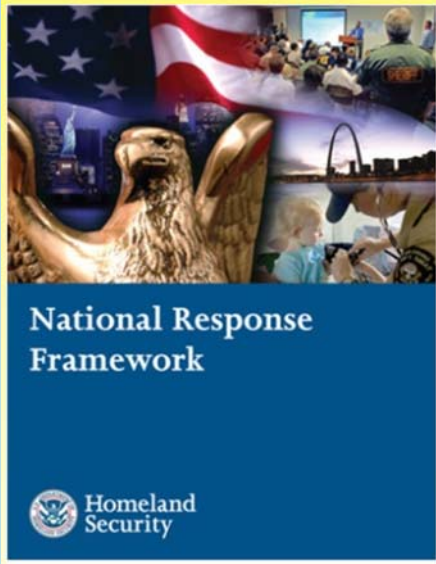


National Response Framework

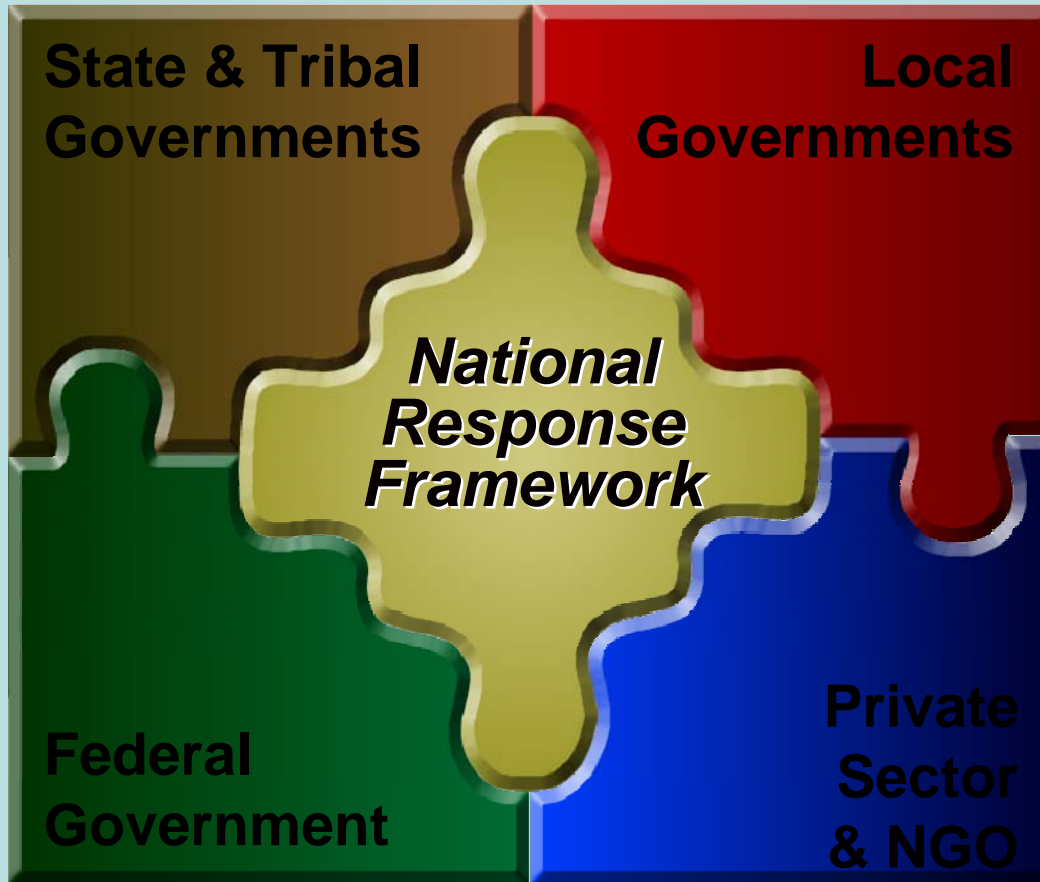
- **Purpose**
 - Guides how the nation conducts all-hazards incident response
- **Key Concepts**
 - Builds on the National Incident Management System (NIMS) with its flexible, scalable, and adaptable coordinating structures
 - Aligns key roles and responsibilities across jurisdictions
 - Links all levels of government (local, tribal, State, **Federal**), private sector, and nongovernmental organizations in a unified approach to emergency management
 - Always in effect: can be partially or fully implemented
 - Coordinates Federal assistance without need for formal trigger



How the Framework is Organized



•Effective, unified national response requires layered, mutually supporting capabilities



•Fed agencies play key roles in response



Federal Agencies and the Framework

- **Coordinated Federal Agency actions are critical both in anticipation of and response to a potentially catastrophic incident or event...**
- **Participation of each federal agency varies based on the nature of the organization, its physical presence in the impacted areas, and the nature of the incident. IN general agencies are tasked to:**
 - 1) Id & Mobilize staff/agency SMEs to ensure Agency can sustain its critical missions during a surge event.**
 - 2) Deploy Liaisons as appropriate to interagency operation centers (NOC, NRCC, RRCC, state EOCs etc.)**
 - 3) Deploy staff to the Joint Field Office to represent the agency ESF responsibilities.**
 - 4) Activate and deploy Agency teams and resources in accord with agency procedures or as requested by DHS.**
 - 5) Execute pre-scripted mission assignments as directed by FCO.**



Framework References for NCP Agencies

- ***NRF Core Document –***
 - ***Chapter 1: Roles and Responsibilities***
 - ***Chapter 3: Response Org – structure & staff***
 - ***Chapter 4: Planning – Fed Planning Structure***

- ***Support Annexes – ESF 10***



NRF

NCP

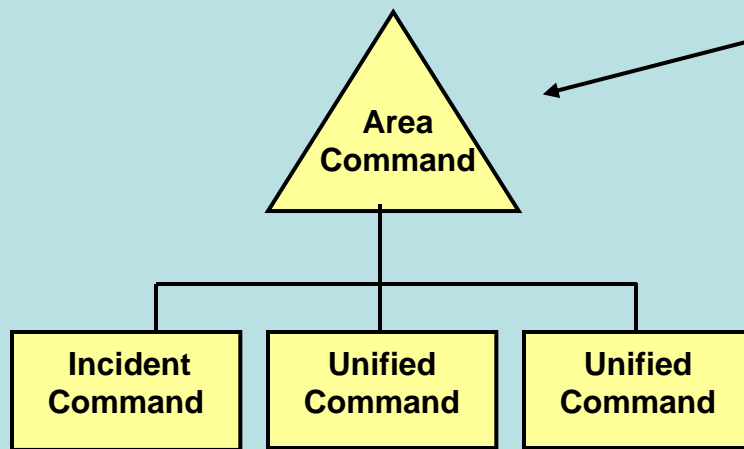
Response Role: Auth to lead Fed Coord & support to On Scene Cmd	Auth to be On-Scene Coord & support NRF
Response Structure: NIMS (ICS & ESF)	NIMS (ICS)
Planning Structure: <ul style="list-style-type: none">•Nat'l Regional•Risk Based with cap built through functional requirements	<ul style="list-style-type: none">•Nat'l, Regional & Local•Risk based with capability built through reg & stakeholder need
Funding: <ul style="list-style-type: none">•Stafford Act•Fed to Fed Support•Agency	<ul style="list-style-type: none">•CERCLA•OSLTF•Responsible Party•Agency



NRF: How it all works

Incident Command

- Directing on-scene emergency management



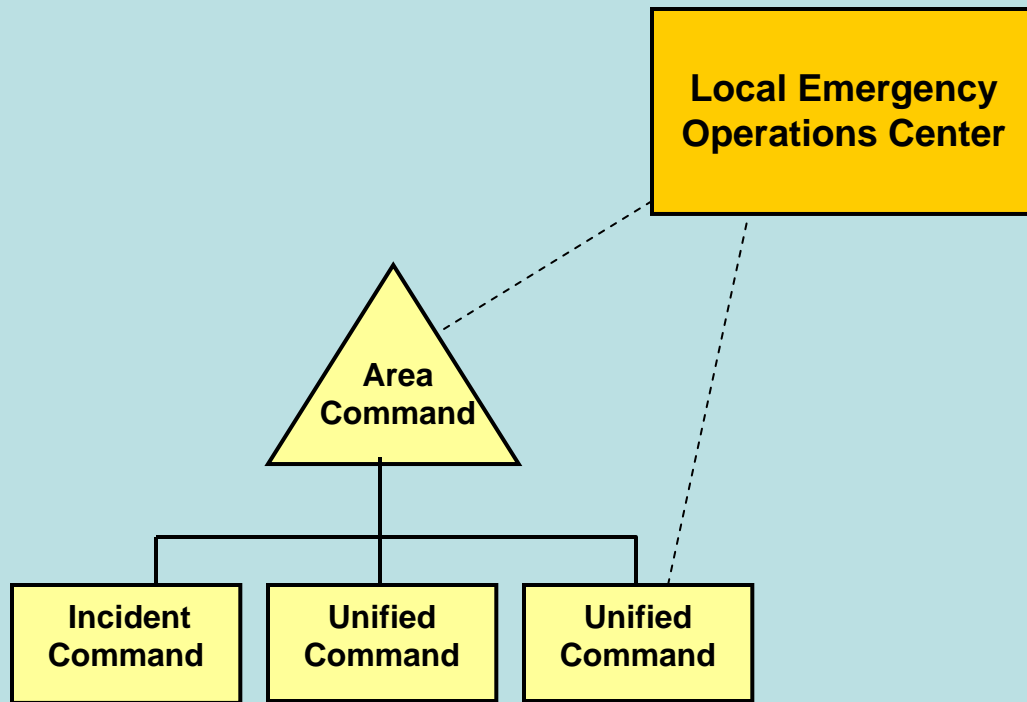
An **Area Command** is established when needed due to the complexity or number of incidents.

- Incident occurs and Incident Command, Unified Command, and/or Area Command stand up to formulate response actions

An Incident Occurs



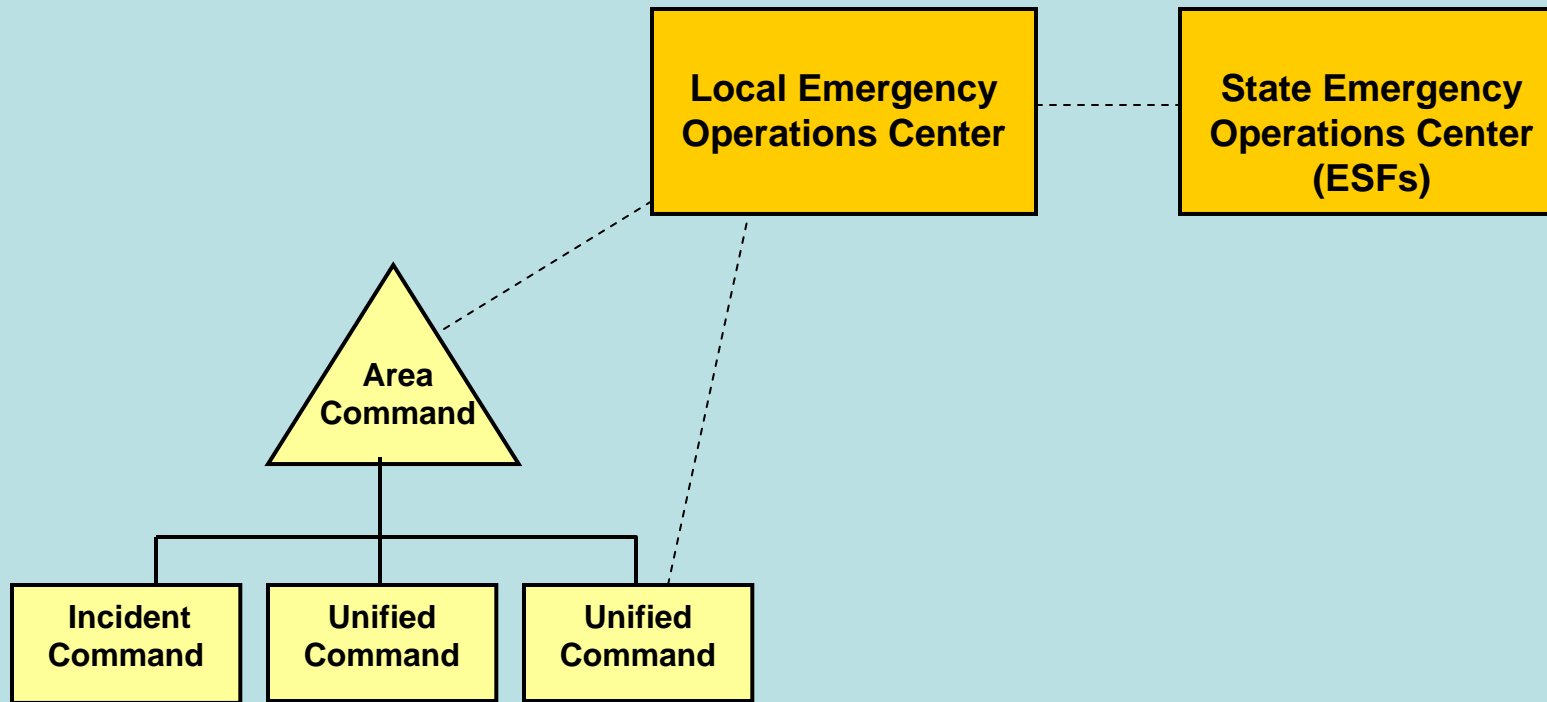
NRF: How it all works



- **Local Emergency Operation Center stands up**



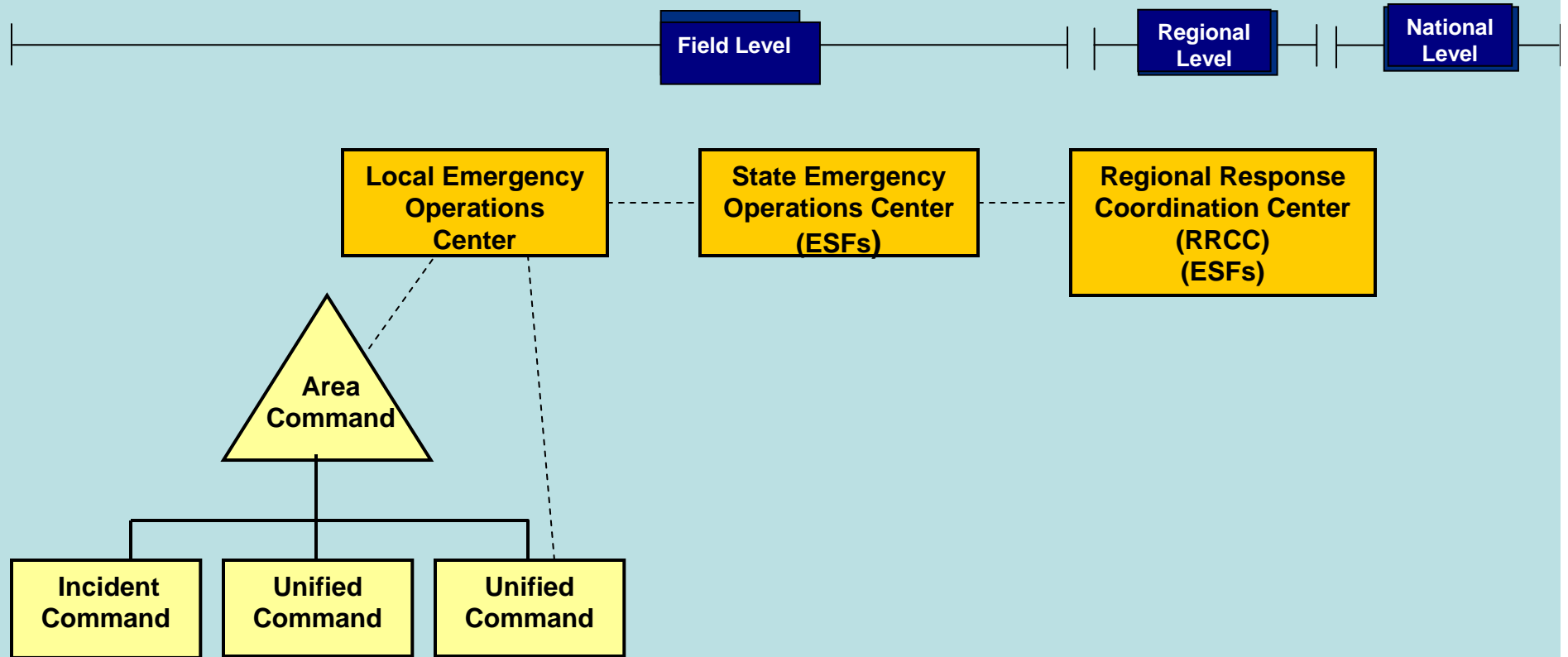
NRF: How it all works



- **State Emergency Operation Center stands up**



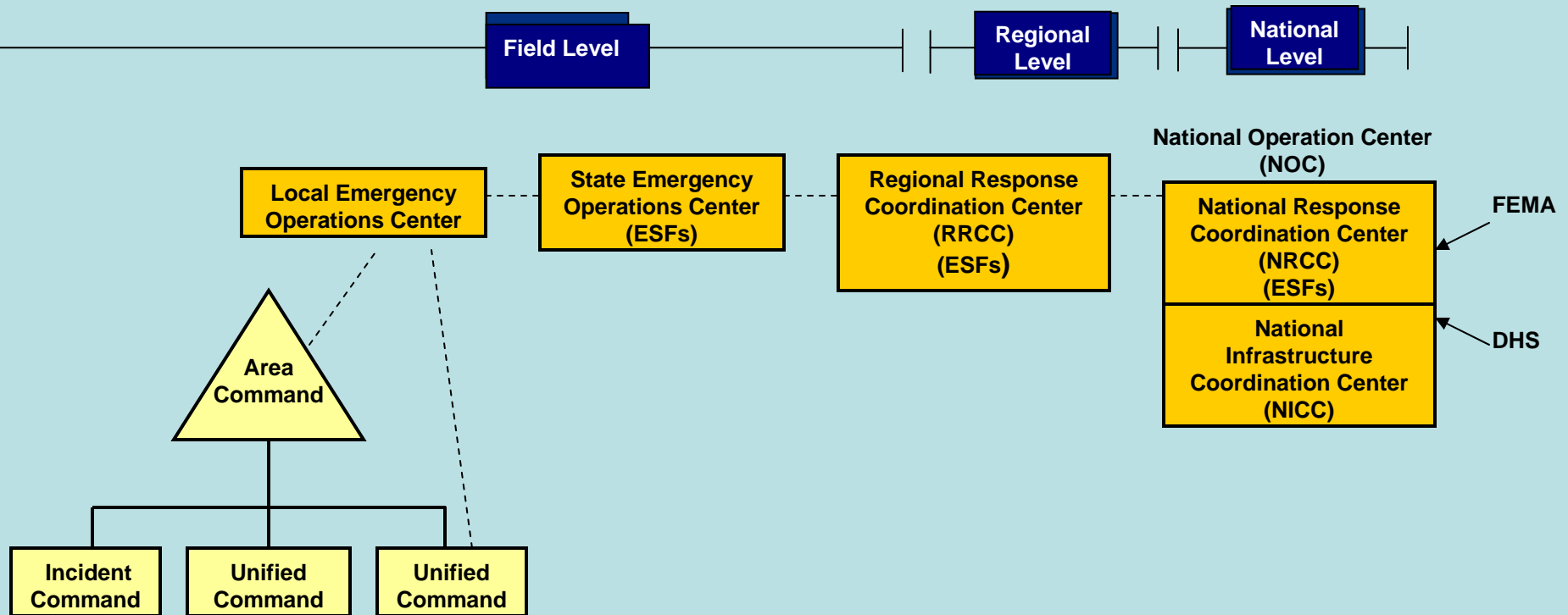
NRF: How it all works



- Regional Response Coordination Centers (RRCC) are available to augment response
- 10 Regional FEMA Office locations
- Duty transitions to Joint Field Office (JFO) once it is established for incident



NRF: How it all works



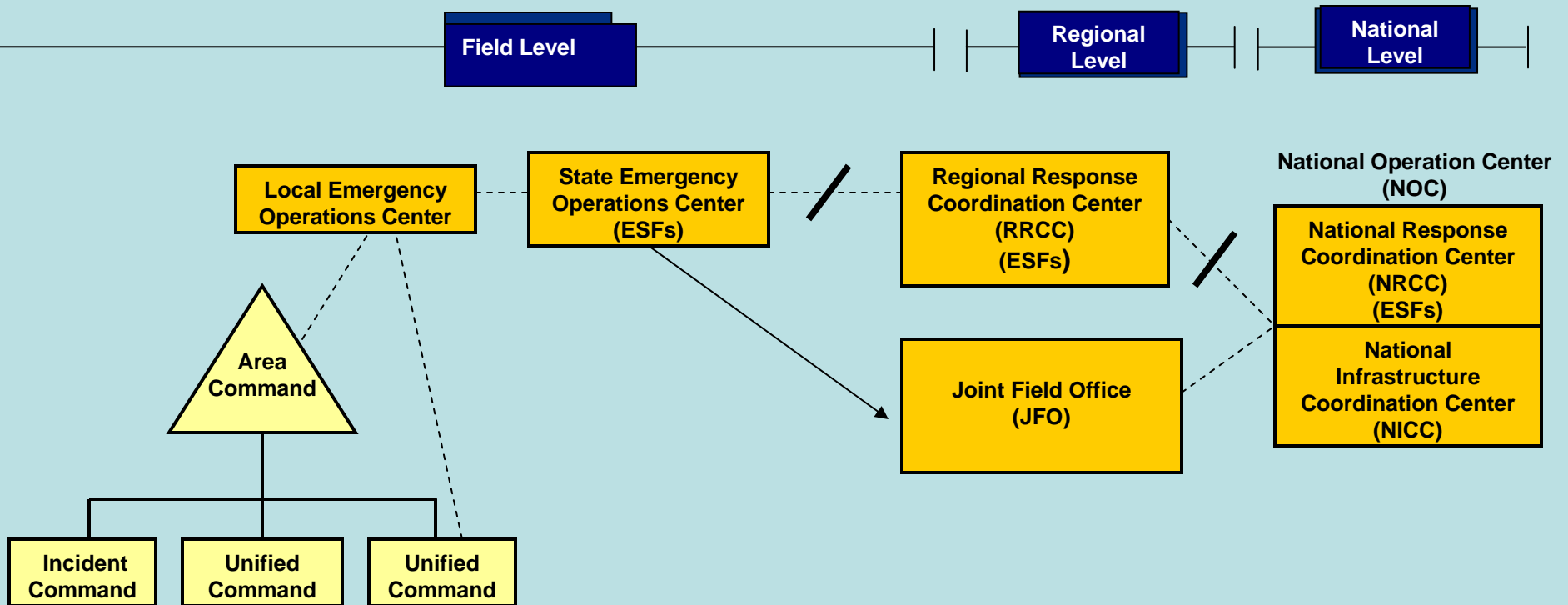
National Operations Center (NOC). Representatives are assigned to various components of the NOC to provide Critical Infrastructure and Key Resources subject-matter expertise and facilitate coordination, risk assessment, protective measure implementation, and information sharing.

National Response Coordination Center (NRCC). Provided with a liaison to provide Critical Infrastructure and Key Resources protection and incident management subject-matter expertise and direct connectivity to the NICC.

National Infrastructure Coordinating Center (NICC). The NICC is a 24/7 watch coordination center providing integrated Critical Infrastructure and Key Resources related situational awareness and national-level coordination.



NRF: How it all works

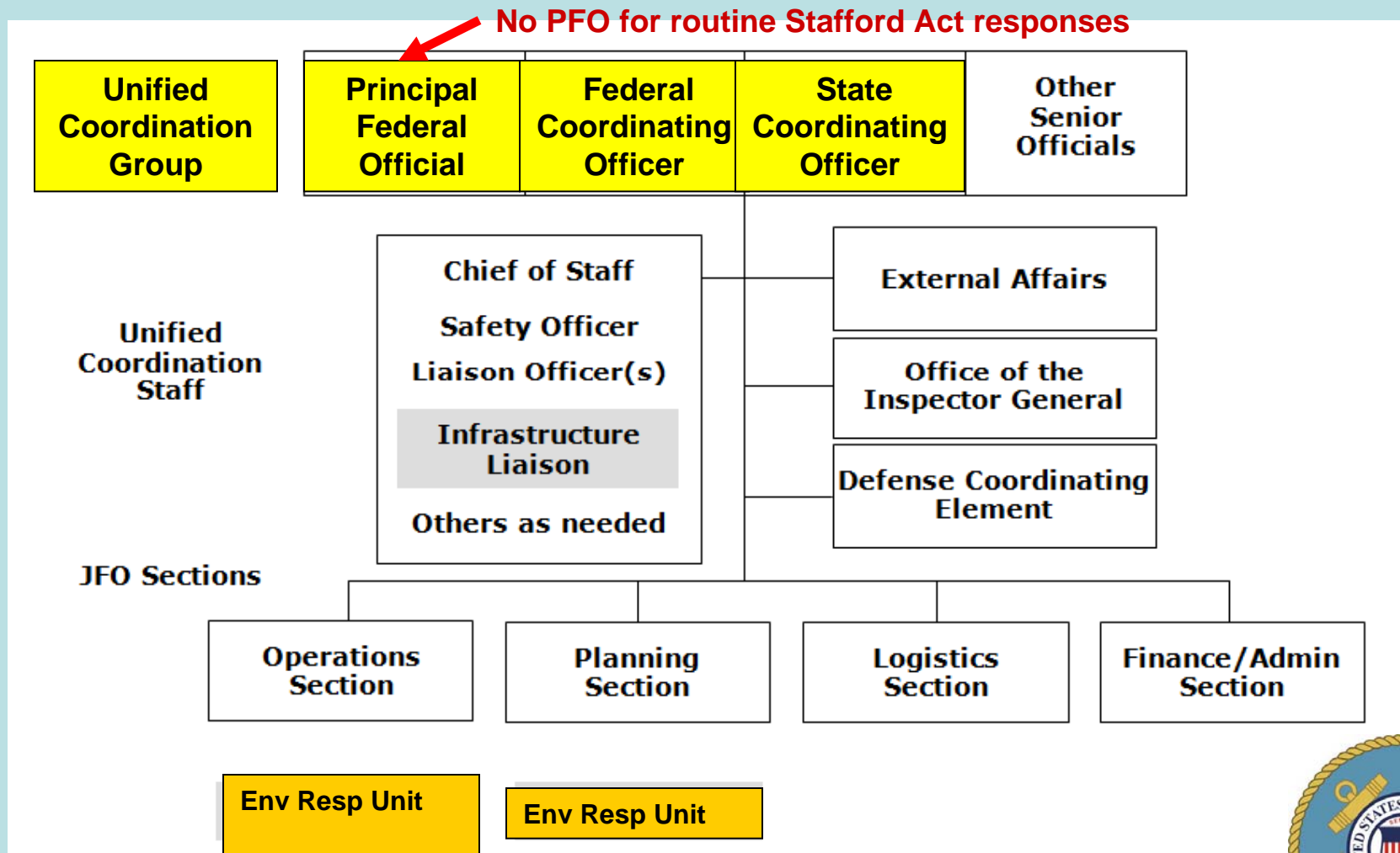


- Once a Joint Field Office is established for the incident, all RRCC coordination duties transition to the JFO



NRF: How it all works

Joint Field Office (JFO) Organization



Questions?

Thank you!

*Bob Pond
US Coast Guard
CG-5331*

202-372-2240

Robert.g.pond@uscg.mil



National Response
Framework



Homeland
Security

